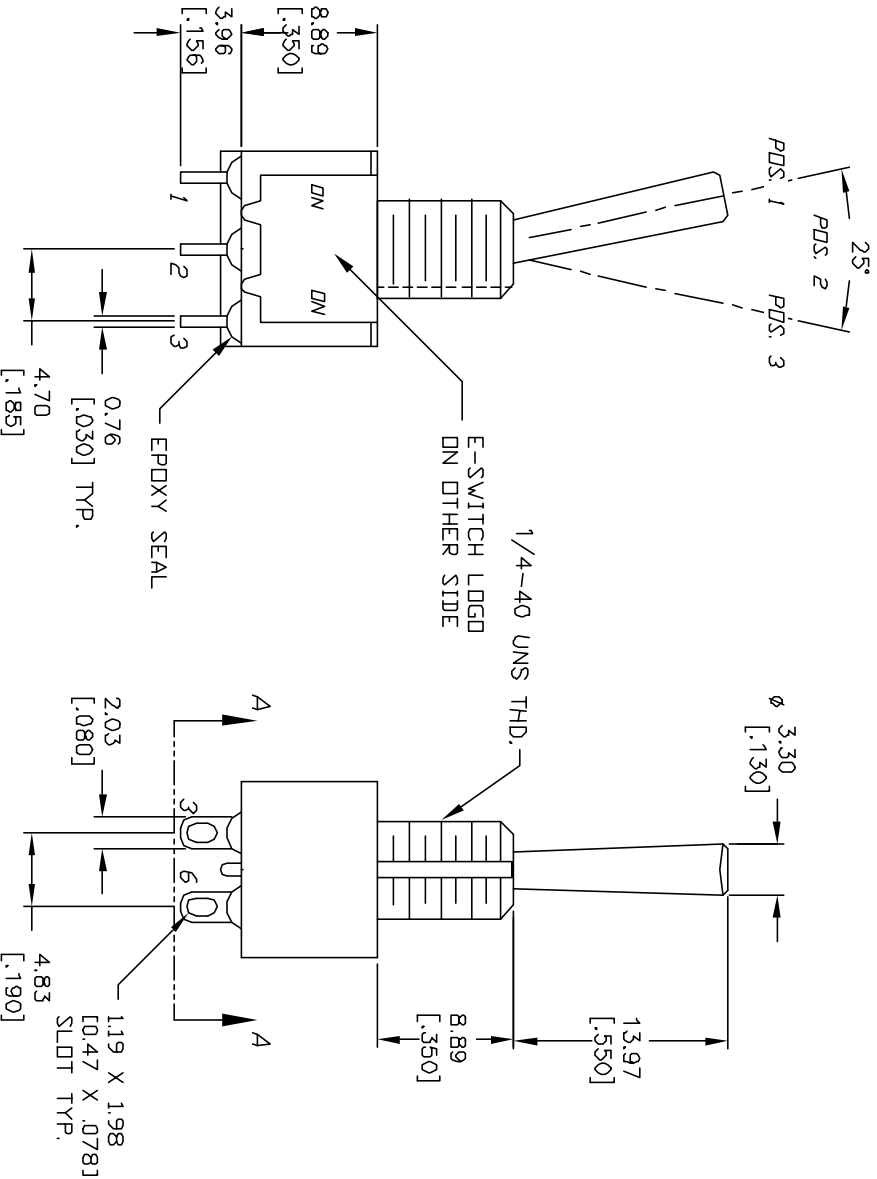
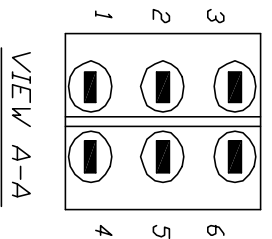
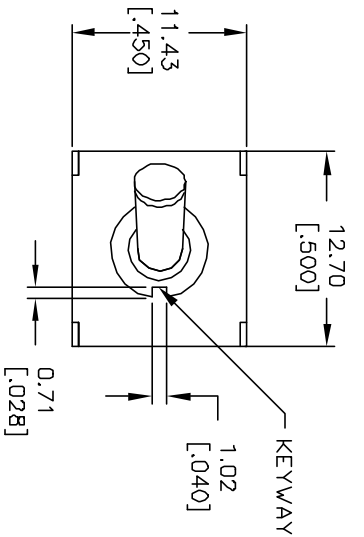


CIRCUIT: DPDT

SWITCH FUNCTION		
PDS. 1	PDS. 2	PDS. 3
DN	NONE	DN
2-3,5-6	DPEN	2-1,5-4

NOTES:

1. ALL DIMENSIONS IN MM [INCH]
2. GENERAL TOLERANCE: X.X=±0.4
X.XX=±0.25
3. TERM. NOS. FOR REF. ONLY
4. RATING: 0.4(VA) max. @20V (AC or DC)
5. MATERIALS: FIXED TERM. & MOVING CONTACT:
Cu Alloy w/Gold plate over Ni plate.
6. ELECTRICAL LIFE: 50,000 make-and-break
cycles at full load.
7. INSULATION RESISTANCE: 1,000M ohm min.
8. DIELECTRIC STRENGTH: 1000V RMS @sea level
9. OPERATING TEMP.: -30°C to 85°C



E-SWITCH®

REV. A	ECN No. 11521	RELEASED FOR PRODUCTION	6/1/01	CJB	TITLE	100 DP-1 T3 B1 M1 R E	DR	CJB	DWG	T121063	REV	A
		DESCRIPTION	DATE	CHKD	SCALE	2:1	DATE	6/1/01				

THE INFORMATION CONTAINED IN THIS DOCUMENT IS PROPRIETARY TO E-SWITCH AND IS NOT TO BE COPIED OR TRANSMITTED