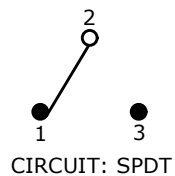
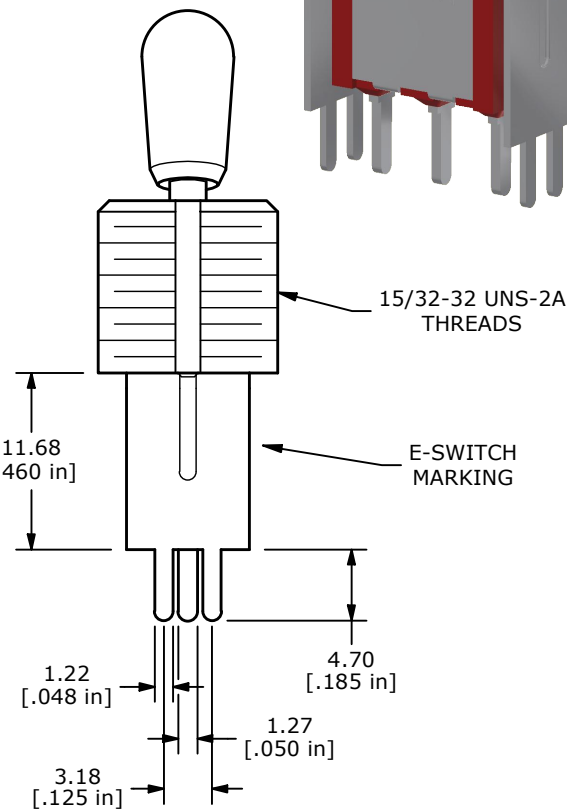
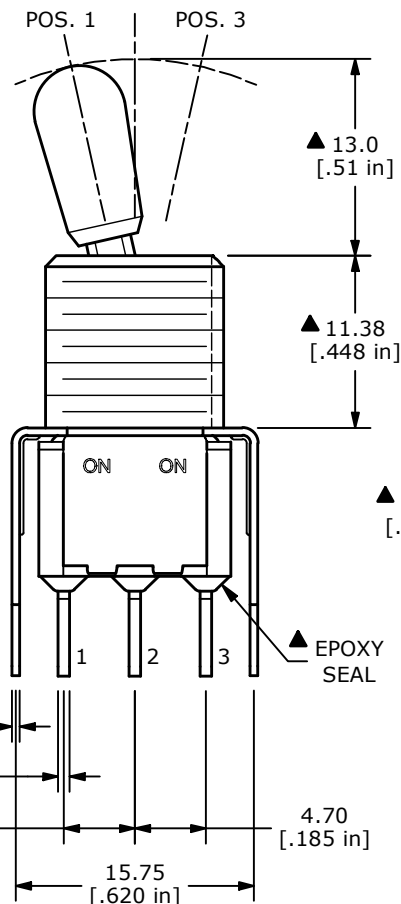
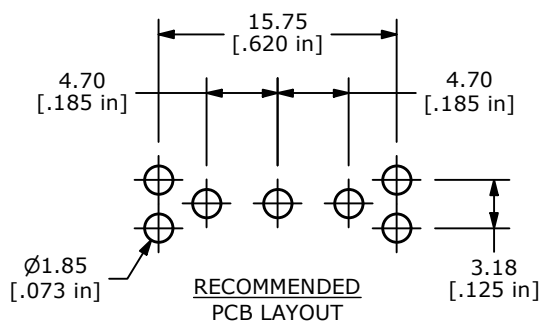


| ▲ SWITCH FUNCTION | | |
|-------------------|--------|--------|
| POS. 1 | POS. 2 | POS. 3 |
| | | |
| ON | NONE | ON |
| 2-3 | N/A | 2-1 |



- NOTE:**
- ALL DIMENSIONS IN MM [INCH]
 - GENERAL TOLERANCE: X.X = ±0.4
X.XX = ±0.25
 - TERMINAL NUMBERS FOR REF ONLY
 - ▲ CONTACT MATERIAL: SILVER
 - RATING: RATING: 2A @ 250VAC
5A @ 120VAC or 28VDC
 - ELECTRICAL LIFE: 6,000 MAKE-AND-BREAK CYCLES AT FULL LOAD
 - INSULATION RESISTANCE: 1,000MΩ MIN.
 - DIELECTRIC STRENGTH: 1,000 V RMS @ SEA LEVEL
 - OPERATING TEMP.: -40°C to 85°C
 - ▲ DENOTES CRITICAL PARAMETER.
 - ▲ 11. HARDWARE INCLUDED: T100012 - LOCK WASHER (1)
T100003 - LOCK RING (1)
T100004 - HEX NUT (2)

| REV | ECO NO | DESCRIPTION | DATE | BY |
|-----|------------|-------------|----------|----|
| A | ECO-103209 | Release | 02/06/25 | MW |



OBJECT ID
100129571

| | | | | |
|-------------------------|----------------|-------|--------------|-------|
| TITLE 100SP1T7B13VS2QE# | | | | |
| SCALE 2:1 | DATE 1/29/2025 | DR MW | DWG ST114099 | REV A |