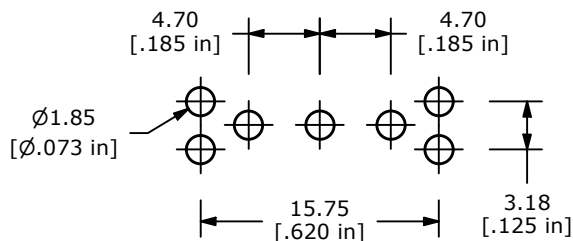
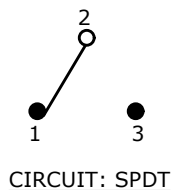


**RECOMMENDED PANEL MOUNTING**

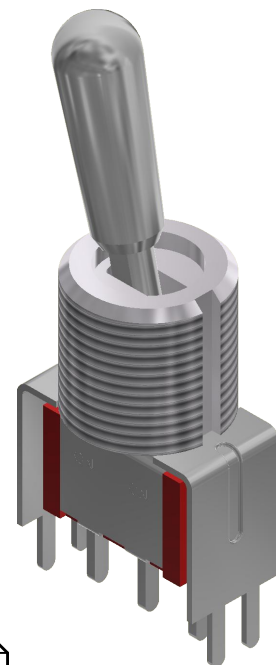
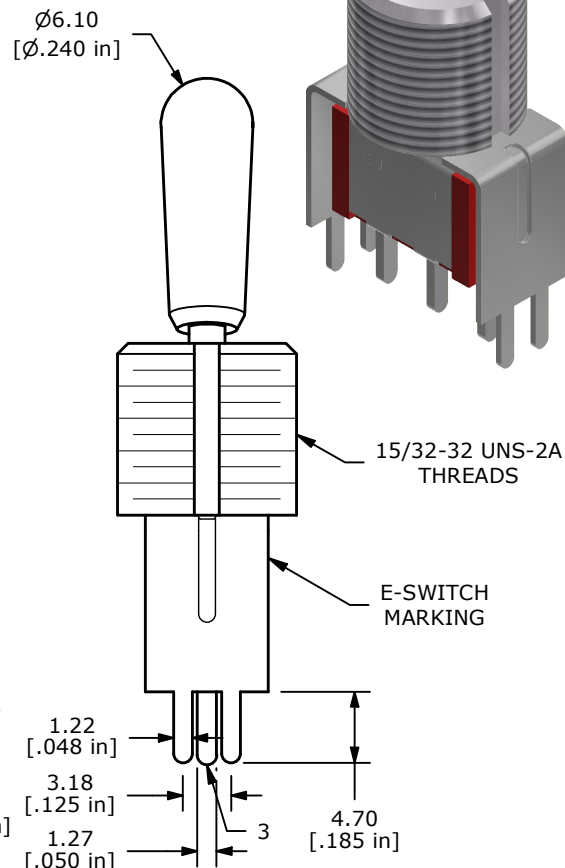
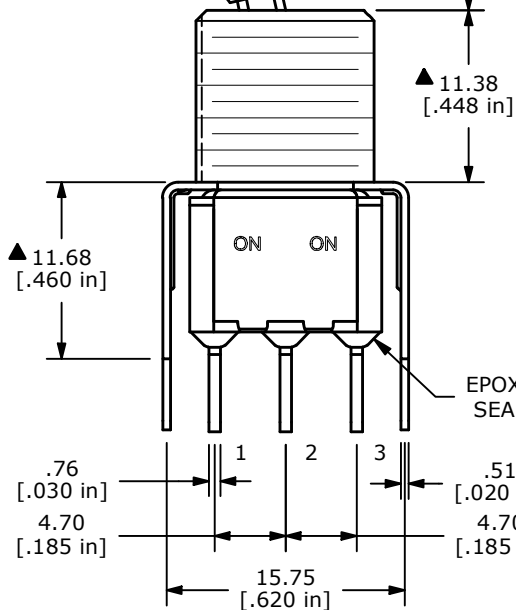
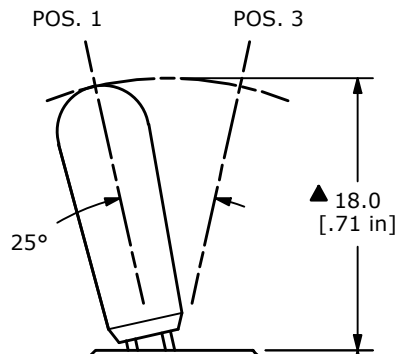
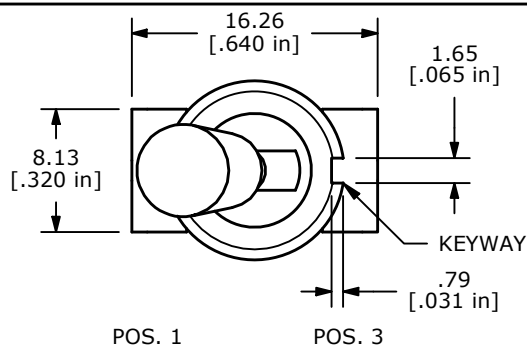
| ▲ SWITCH FUNCTION |        |        |
|-------------------|--------|--------|
| POS. 1            | POS. 2 | POS. 3 |
|                   |        |        |
| ON                | NONE   | ON     |
| 2-3               | N/A    | 2-1    |



**RECOMMENDED PCB LAYOUT**



- NOTE:**
1. ALL DIMENSIONS IN MM [INCH]
  2. GENERAL TOLERANCE: X.X=±0.4  
X.XX=±0.25
  3. TERMINAL NUMBERS FOR REF ONLY
  - ▲ 4. CONTACT MATERIAL: SILVER
  5. RATING: 2A @ 250 VAC  
5A @ 120 VAC OR 28 VDC
  6. ELECTRIC LIFE: 40,000 MAKE-AND-BREAK CYCLES AT FULL LOAD.
  7. INSULATION RESISTANCE: 1,000 MEGA-OHM MIN.
  8. DIELECTRIC STRENGTH: 1,000 V RMS @SEA LEVEL.
  9. OPERATING TEMP.: -40°C TO 85°C
  10. ▲ DENOTES CRITICAL PARAMETER.



| REV | ECO NO     | DESCRIPTION | DATE     | BY |
|-----|------------|-------------|----------|----|
| A   | ECO-102309 | NEW RELEASE | 10/24/23 | MR |



OBJECT ID  
100125928

|                        |                 |        |             |       |
|------------------------|-----------------|--------|-------------|-------|
| TITLE 100SP1T8B13VS2QE |                 |        |             |       |
| SCALE 2:1              | DATE 10/17/2023 | DR MJR | DWG T110072 | REV A |