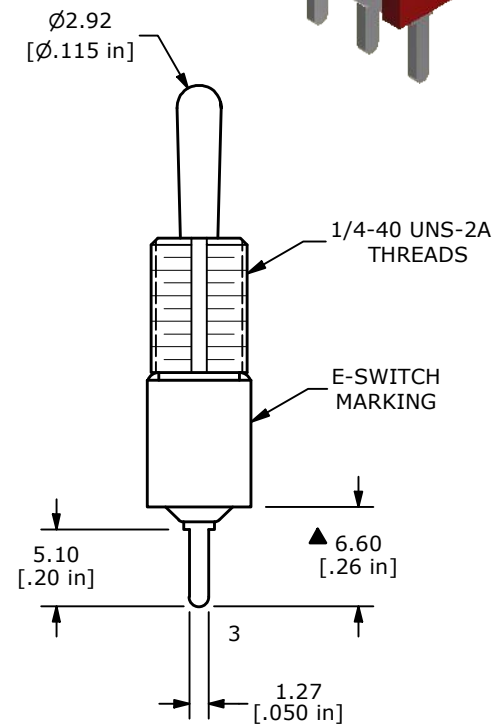
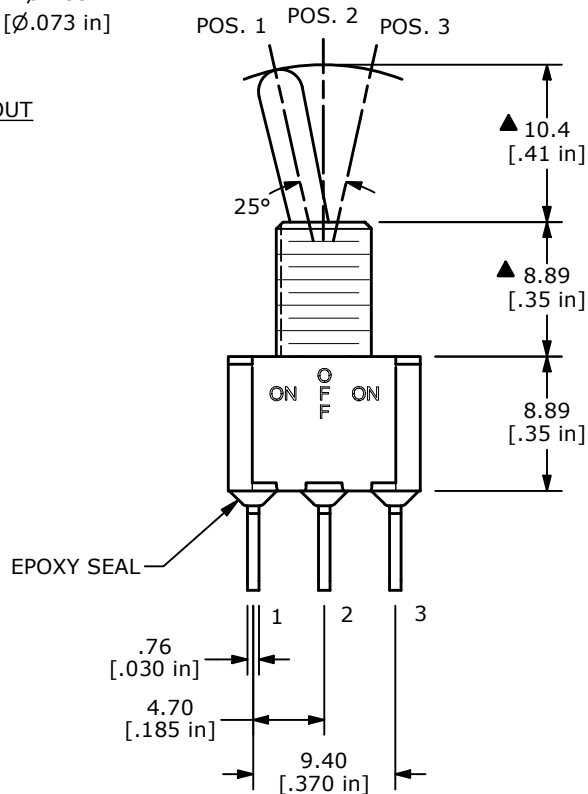
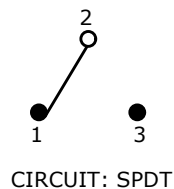
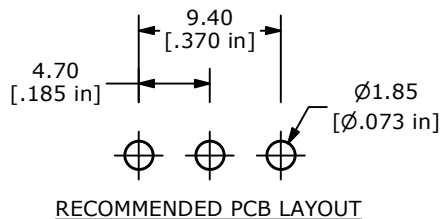


▲ SWITCH FUNCTION		
POS. 1	POS. 2	POS. 3
ON	OFF	ON
2-3	OPEN	2-1



- NOTE:
- ALL DIMENSIONS IN MM [INCH]
  - GENERAL TOLERANCE: X.X = ±0.4  
X.XX = ±0.25
  - TERMINAL NUMBERS FOR REF ONLY
  - ▲ PLATING MATERIAL: SILVER
  - RATING: 2A @ 250 VAC  
5A @ 120 VAC OR 28 VDC
  - ELECTRIC LIFE: 6,000 MAKE-AND-BREAK CYCLES AT FULL LOAD.
  - INSULATION RESISTANCE: 1,000 MEGA-OHM MIN.
  - DIELECTRIC STRENGTH: 1,000 V RMS @ SEA LEVEL
  - OPERATING TEMP.: -40°C TO 85°C
  - ▲ DENOTES CRITICAL PARAMETER.

REV	ECO NO	DESCRIPTION	DATE	BY
F	ECO-101768	100 SERIES UPDATE	03/28/23	MR



OBJECT ID  
000024009

TITLE 100SP3T1B1M2QE				
SCALE 2:1	DATE 4/18/2007	DR TN	DWG T113013	REV F