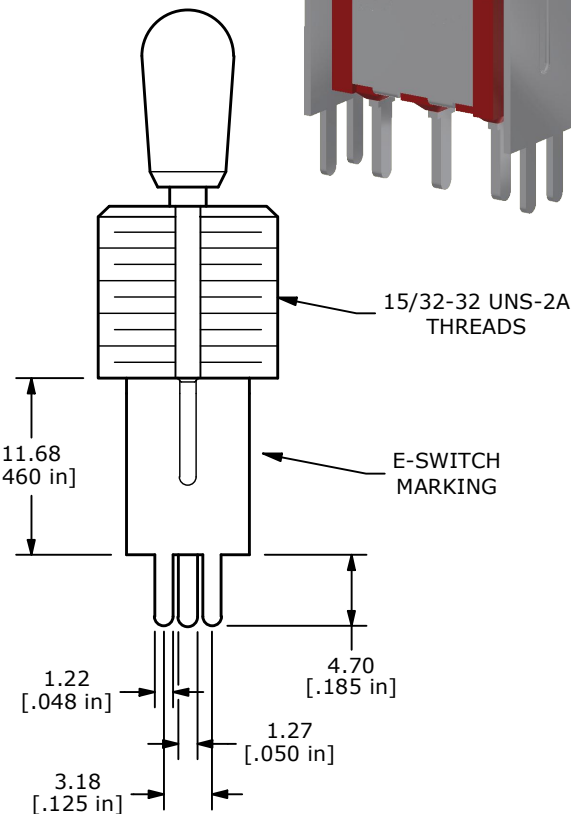
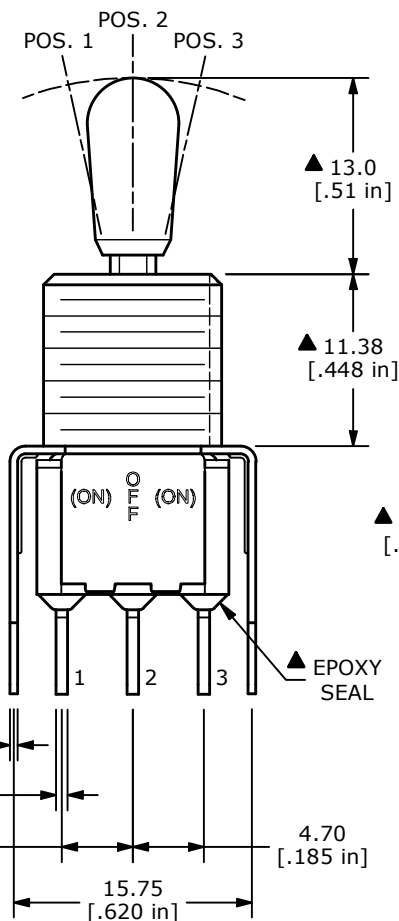
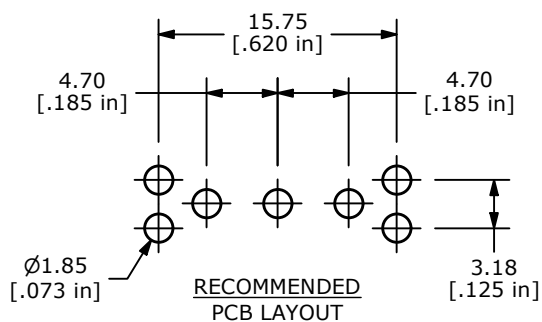
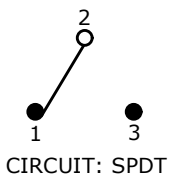


▲ SWITCH FUNCTION

POS. 1	POS. 2	POS. 3
(ON)	OFF	(ON)
2-3	OPEN	2-1

() = DENOTES MOMENTARY



NOTE:

1. ALL DIMENSIONS IN MM [INCH]
2. GENERAL TOLERANCE: X.X = ±0.4
X.XX = ±0.25
3. TERMINAL NUMBERS FOR REF ONLY
- ▲ 4. CONTACT MATERIAL: SILVER
5. RATING: RATING: 2A @ 250VAC
5A @ 120VAC or 28VDC
6. ELECTRICAL LIFE: 6,000 MAKE-AND-BREAK CYCLES AT FULL LOAD
7. INSULATION RESISTANCE: 1,000MΩ MIN.
8. DIELECTRIC STRENGTH: 1,000 V RMS @ SEA LEVEL
9. OPERATING TEMP.: -40°C to 85°C
10. ▲ DENOTES CRITICAL PARAMETER.
- ▲ 11. HARDWARE INCLUDED: T100012 - LOCK WASHER (1)
T100003 - LOCK RING (1)
T100004 - HEX NUT (2)

REV	ECO NO	DESCRIPTION	DATE	BY
A	ECO-103209	Release	02/06/25	MW



OBJECT ID
100129560

TITLE 100SP4T7B13VS2QE#				
SCALE 2:1	DATE 1/29/2025	DR MW	DWG ST114098	REV A