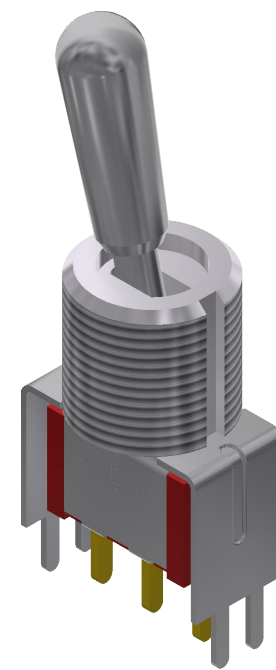
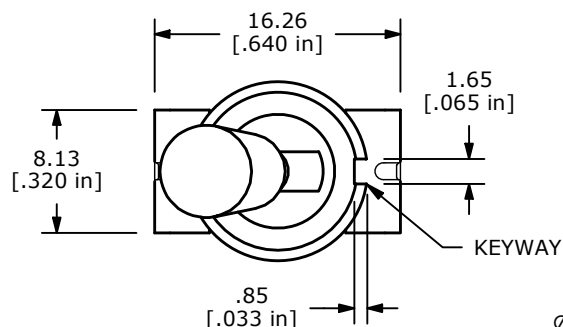
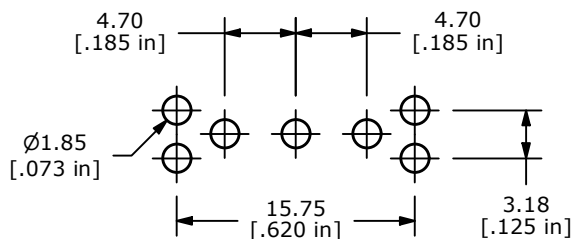


RECOMMENDED PANEL MOUNTING

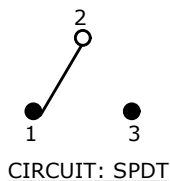


▲ SWITCH FUNCTION		
POS. 1	POS. 2	POS. 3
ON	OFF	(ON)
2-3	OPEN	2-1

() = DENOTES MOMENTARY

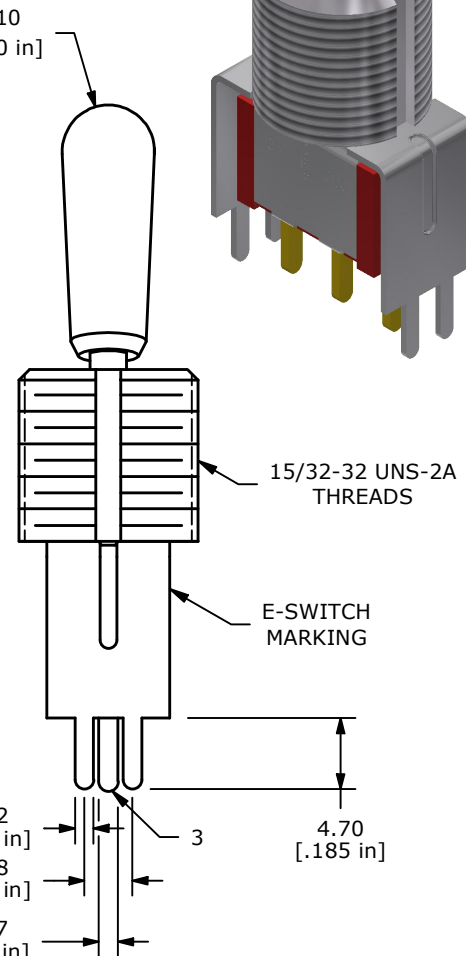
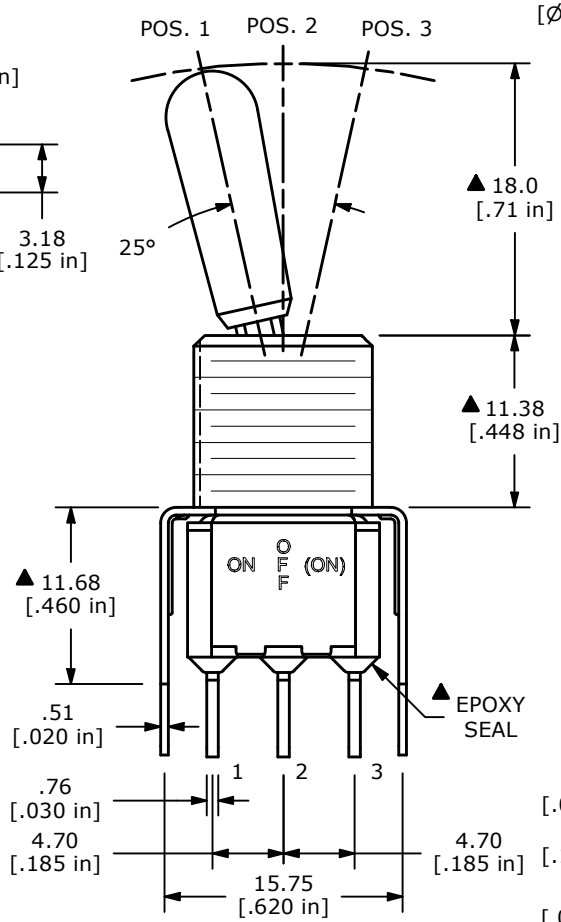


RECOMMENDED PCB LAYOUT



NOTE:

- ALL DIMENSIONS IN MM [INCH]
- GENERAL TOLERANCE: X.X=±0.4
X.XX=±0.25
- TERMINAL NUMBERS FOR REF ONLY
- CONTACT MATERIAL: GOLD
- RATING: 0.4 VOLT-AMPS (VA) MAX. @ 20V MAX. (AC OR DC)
- ELECTRIC LIFE: 6,000 MAKE-AND-BREAK CYCLES AT FULL LOAD.
- INSULATION RESISTANCE: 1,000 MEGA-OHM MIN.
- DIELECTRIC STRENGTH: 1,000 V RMS @SEA LEVEL.
- OPERATING TEMP.: -40°C TO 85°C
- ▲ DENOTES CRITICAL PARAMETER.



REV	ECO NO	DESCRIPTION	DATE	BY
C	ECO-102350	100 SERIES UPDATE	01/10/24	MR

OBJECT ID
000024043

E-SWITCH®

TITLE 100SP5T8B13VS2RE

SCALE 2:1	DATE 10/27/2008	DR BLR	DWG T113067	REV C
-----------	-----------------	--------	-------------	-------