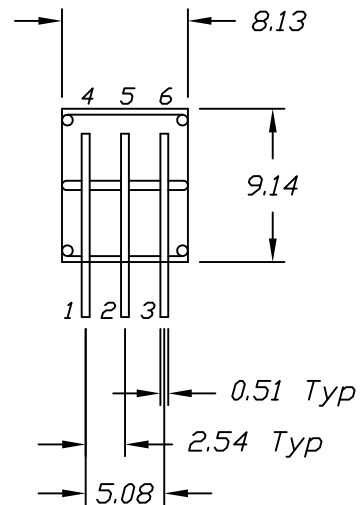
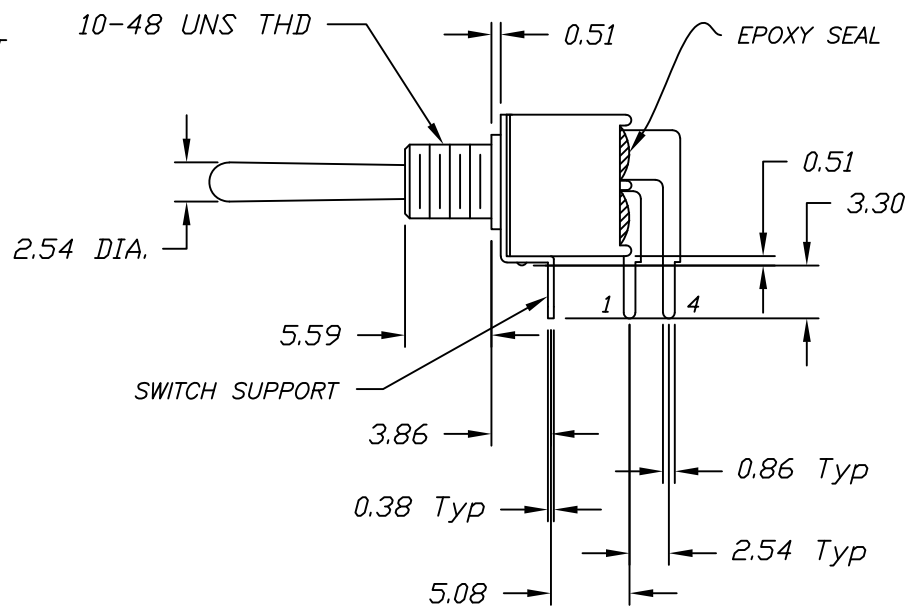
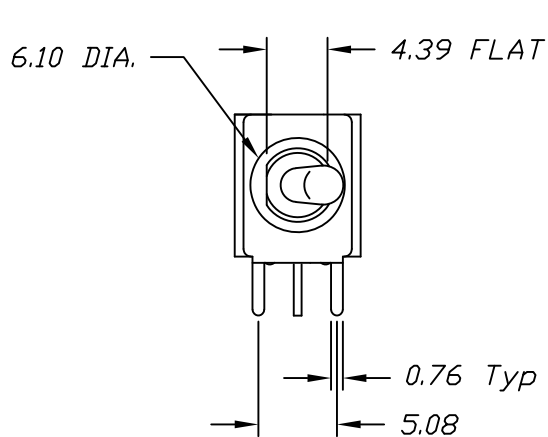
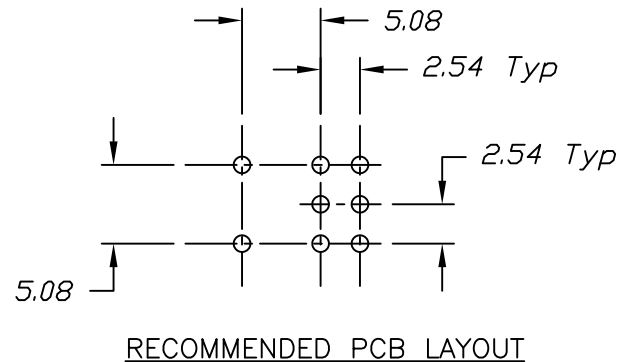
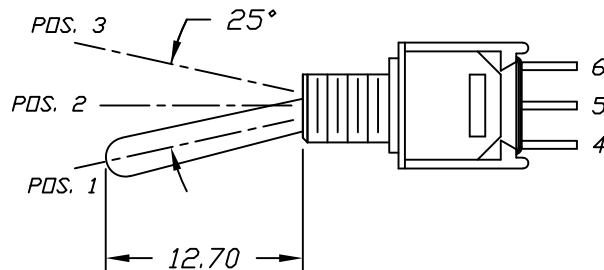


CIRCUIT: DPDT  
CONTACT CONFIGURATION

SWITCH FUNCTION		
PDS. 1	PDS. 2	PDS. 3
ON	NONE	ON
2-3,5-6	OPEN	2-1,5-4



NOTES:

1. ALL DIMENSIONS IN MM
2. GENERAL TOLERANCE: 0.0=±0.4  
0.00=±0.25
3. TERM. NOS. FOR REF. ONLY
4. CONTACT RATING: 0.4VA max. @20VAC or DC max.
5. ELECTRICAL LIFE: 30,000 make-and-break cycle at full load.
6. INSULATION RESISTANCE: 1,000M Ohms min.
7. DIELECTRIC STRENGTH: 1,000 V RMS @sea level.
8. OPERATING TEMP.: -30°C to 85°C

**E-SWITCH**

TITLE					200 MDP-1 T4 B1 M6 R E				
SCALE	DATE	DR	DWG	REV					
2:1	6/8/00	MM	T221007	A					

THE INFORMATION CONTAINED IN THIS DOCUMENT IS PROPRIETARY TO E-SWITCH AND IS NOT TO BE COPIED OR TRANSFERRED

A	10669	RELEASED FOR PRODUCTION	6/8/00	MM
REV.	ECN No.	DESCRIPTION	DATE	CHKD