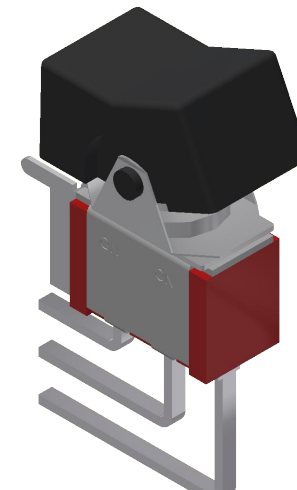
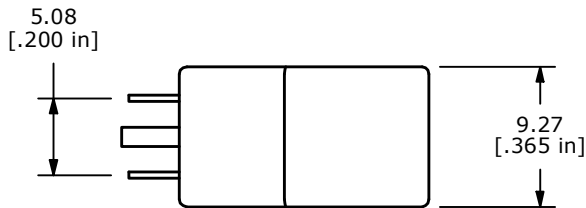
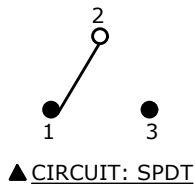


RECOMMENDED P.C.B LAYOUT

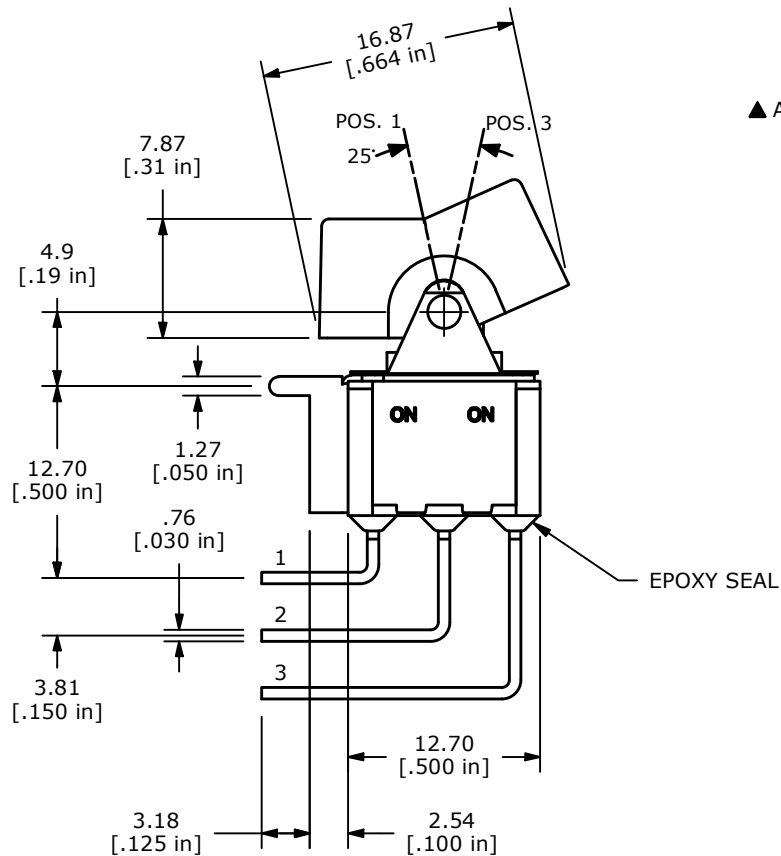


SWITCH FUNCTION		
POS. 1	POS. 2	POS. 3
ON	NONE	ON
2-3	N/A	2-1

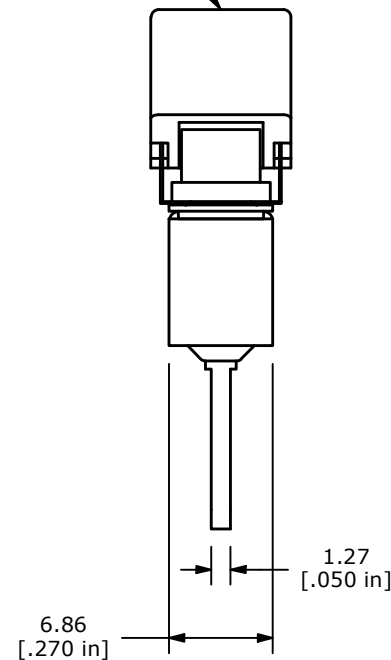


NOTE:

1. ALL DIMENSIONS IN MM [INCH]
2. GENERAL TOLERANCE: X.X=±0.4
X.XX=±0.25
3. TERMINAL NUMBERS FOR REF ONLY
4. PLATING MATERIAL: SILVER
- ▲ 5. RATING: 2 AMPS @250VAC
5 AMPS @120VAC OR 28VDC
6. CONTACT RESISTANCE: 10 MILLI OHM MAX INITIAL
7. ELECTRIC LIFE: 40,000 MAKE-AND-BREAK CYCLES AT FULL LOAD.
8. INSULATION RESISTANCE: 1,000 MEGA-OHM MIN.
9. DIELECTRIC STRENGTH: 1,000 V RMS @SEA LEVEL.
10. OPERATING TEMP.: -40°C to 85°C
11. ▲ DENOTES CRITICAL PARAMETER.



▲ ACTUATOR COLOR: BLACK



REV	ECO NO	DESCRIPTION	DATE	BY
D	ECO-102366	UPDATE PRINT	12/13/23	JS



OBJECT ID
000025021

TITLE 300SP1J1BLKM7QE				
SCALE 2:1	DATE 6/5/2002	DR CJB	DWG T311014	REV D