

SCHEMATIC

SPECIFICATIONS

FUNCTION:
1P1T OFF-(ON)

RATINGS:
16A 125VAC [cURus]
10A 250VAC [cURus]

ELECTRICAL LIFE:
6,000 Cycles [cURus]

TEMPERATURE:
Operating: -20°C to 65°C [cURus]

APPROVALS:



MATERIALS

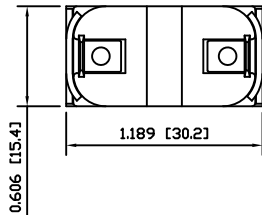
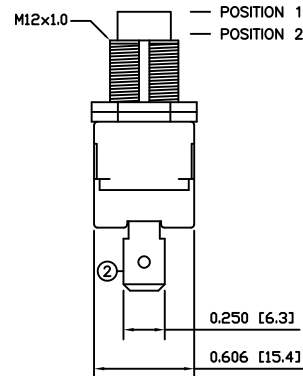
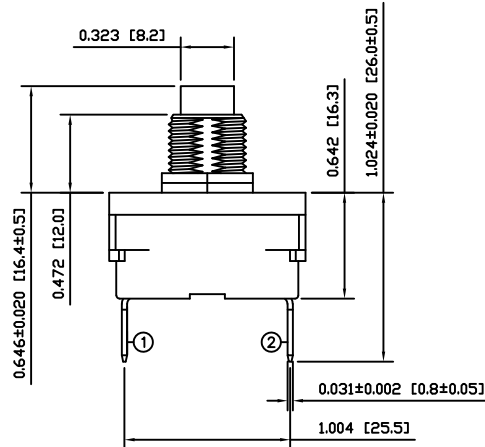
BODY:
Phenolic, UL94 V-0

ACTUATOR:
Nylon

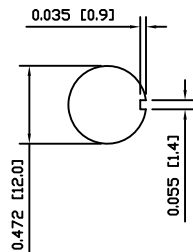
BUSHING:
Steel

CONTACTS:
Silver Plated Copper

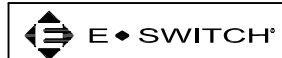
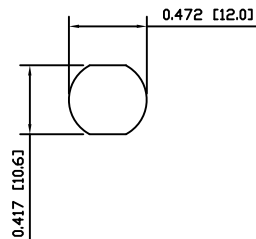
TERMINALS:
Brass



SUGGESTED PANEL CUTOUT



ALTERNATE PANEL CUTOUT



HY55-01113

THE INFORMATION CONTAINED IN THIS DOCUMENT IS PROPRIETARY TO E-SWITCH AND IS NOT TO BE COPIED OR TRANSFERRED

A
REV.

INITIAL RELEASE
DESCRIPTION

PCRD0195
PCR

09/11/05
DATE

CAB
DRAWN BY

DIMENSIONS
INCHES [MILLIMETERS]
GENERAL TOLERANCES
±0.008 [±0.2] / ±1°

SCALE
DRAWING NOT TO SCALE



DRAWING NUMBER
34-HY5501113

DATE
NOVEMBER 5, 2009

REVISION
A