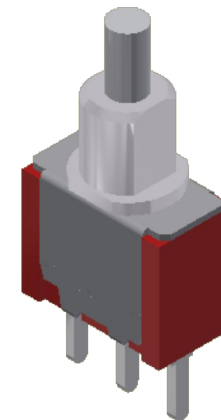
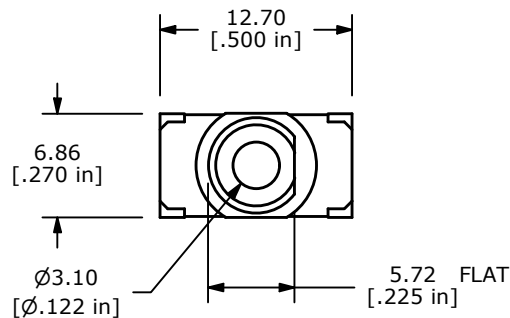
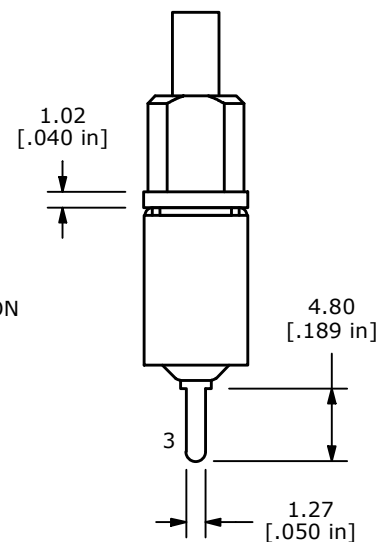
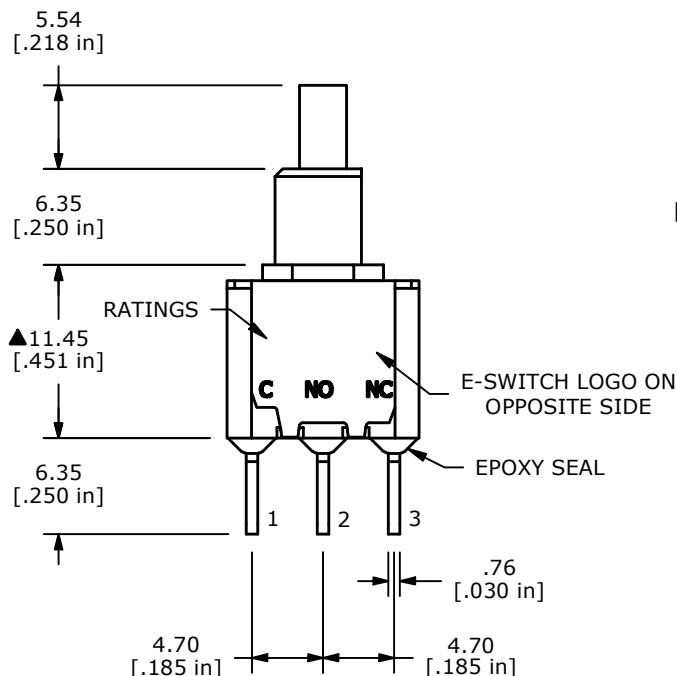
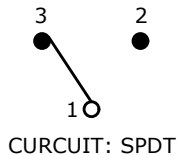


PANEL MOUNTING



SWITCH FUNCTION	
POS. 1	POS. 2
ON	(ON)
1-3	1-2

(ON)=MOMENTARY



NOTE:

- ALL DIMENSIONS IN MM [INCH]
- GENERAL TOLERANCE: X.X=±0.4  
X.XX=±0.25
- TERMINAL NUMBERS FOR REF ONLY
- CONTACT MATERIAL: SILVER
- RATING: 3A @ 120 VAC OR 28 VDC  
1A @ 250 VAC
- ELECTRIC LIFE: 6,000 MAKE-AND-BREAK CYCLES  
AT FULL LOAD
- MECHANICAL LIFE: 50,000 CYCLES
- INSULATION RESISTANCE: 1,000 MΩ MIN.
- ACTUATION FORCE: 350 ± 150gf
- TRAVEL: 1.0 ± 0.2mm
- CONTACT RESISTANCE: 20 mΩ MAX.  
TYPICAL @ 2-4 VDC
- DIELECTRIC STRENGTH: 1,000 V RMS @ SEA LEVEL.
- OPERATING TEMP.: -40°C to 85°C
- ▲ DENOTES CRITICAL PARAMETER.

REV	ECO NO	DESCRIPTION	DATE	BY
C	ECO-102819	700 SERIES UPDATE	08/05/24	JS



OBJECT ID  
000025720

TITLE 700SP7B21M2QE				
SCALE 2:1	DATE 6/13/2011	DR BGL	DWG T711033	REV C