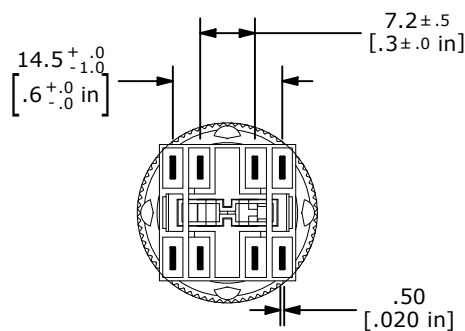
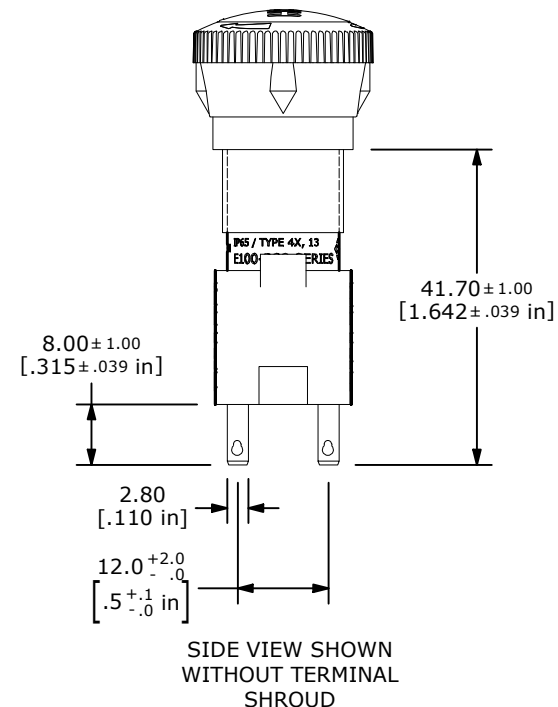
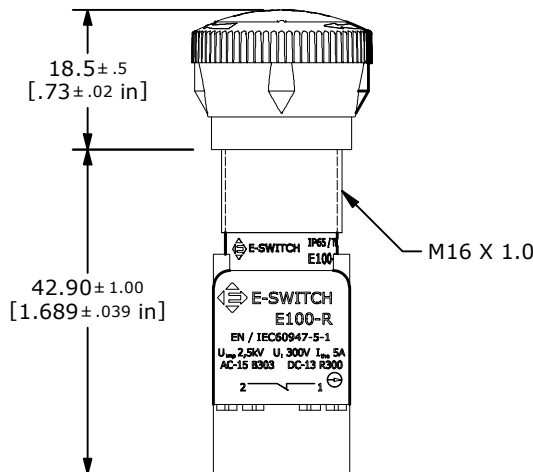
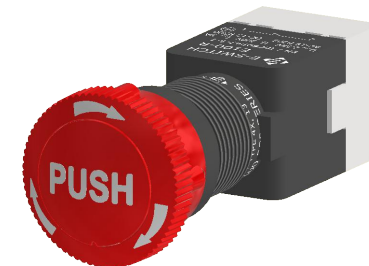
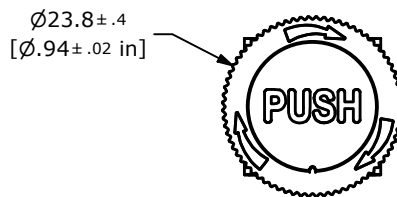
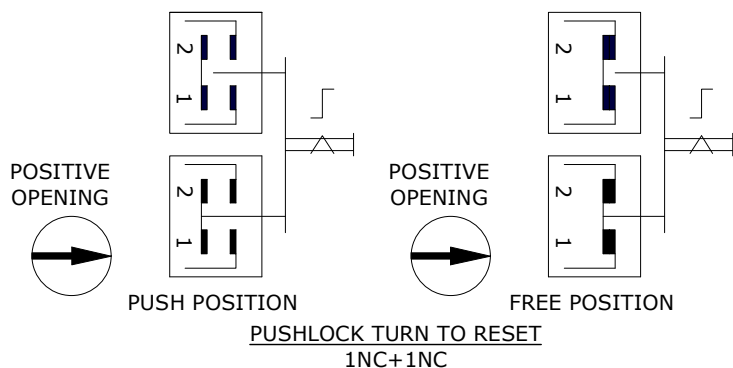


RECOMMENDED PANEL CUTOUT  
MAX. PANEL THICKNESS 5mm



BOTTOM VIEW SHOWN WITHOUT SHROUD ACTUATOR

- NOTE:
- DIMENSIONS IN MM [INCH]
  - GENERAL TOLERANCE: X.X = ± 0.4  
X.XX = ± 0.25
  - TERMINAL NUMBERS FOR REF ONLY
  - CONTACT RATINGS: 3A @ 125VAC, 1.5A @ 250VAC  
0.22A @ 24VDC, 0.11A @ 250VDC
  - AGENCY APPROVALS: TUV, EN 60947-5-1 : EN 60947-5-5
  - CONTACT RESISTANCE: 50mΩ MAX. (INITIAL)
  - INSULATION RESISTANCE: 100MΩ MIN. @ 500VDC
  - DIELECTRIC STRENGTH: 1,500VAC FOR 1 MINUTE
  - ELECTRICAL LIFE: 50,000 CYCLES
  - MECHANICAL LIFE: 100,000 CYCLES
  - OPERATING TEMPERATURE: -25°C TO 70°C
  - ▲ DENOTES CRITICAL PARAMETER
  - ▲ 13. HARDWARE INCLUDED (NOT SHOWN): 1 GASKET, 1 EMERGENCY STOP ID PLATE, & 1 MOUNTING RING

REV	ECO NO	DESCRIPTION	DATE	BY	E-SWITCH®				OBJECT ID
C	ECO-102771	SCHEMATIC FROM NC+NO TO NC+NC	05/31/24	MR					100123344
					TITLE E100-R22-N10R				
					SCALE 1:1	DATE 2/22/2023	DR MJR	DWG F012000	REV C