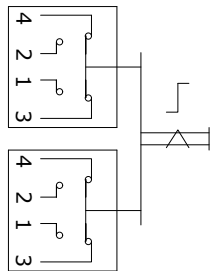
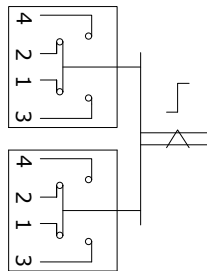


RECOMMENDED PANEL CUTOUT  
MAX. PANEL THICKNESS 5mm

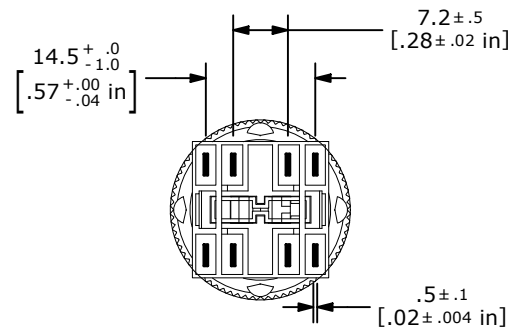
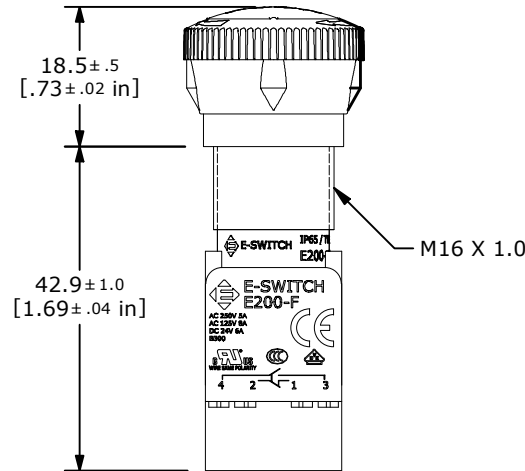
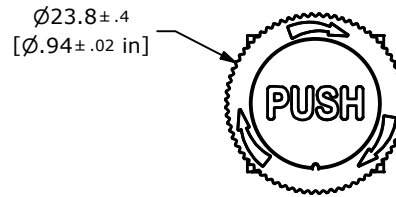


PUSH POSITION

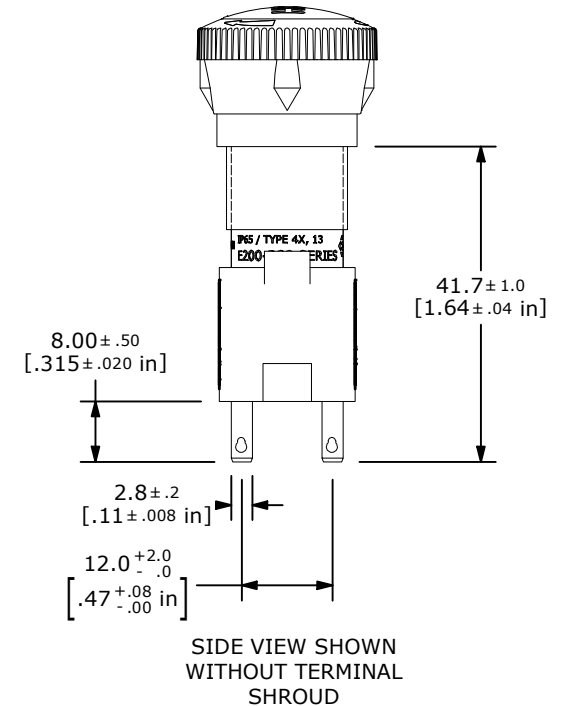
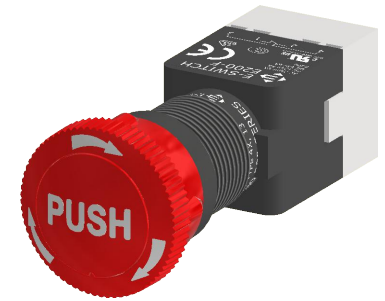


FREE POSITION

PUSHLOCK TURN TO RESET  
1NO+1NC



BOTTOM VIEW SHOWN  
WITHOUT SHROUD ACTUATOR



## NOTE:

1. DIMENSIONS IN MM [INCH]
2. GENERAL TOLERANCE: X.X = ± 0.4  
X.XX = ± 0.25
3. TERMINAL NUMBERS FOR REF ONLY
4. CONTACT RATINGS: 8A @ 125VAC, 5A @ 250VAC  
6A @ 24VDC, 0.2A @ 250VDC
5. AGENCY APPROVALS: ANSI/UL508; EN 60947-5-1 & EN 61058-1
6. CONTACT RESISTANCE: 50mΩ MAX. (INITIAL)
7. INSULATION RESISTANCE: 100MΩ MIN. @ 500VDC
8. DIELECTRIC STRENGTH: 1,500VAC FOR 1 MINUTE
9. ELECTRICAL LIFE: 50,000 CYCLES
10. MECHANICAL LIFE: 100,000 CYCLES
11. OPERATING TEMPERATURE: -25°C TO 70°C
12. ▲ DENOTES CRITICAL PARAMETER
- ▲ 13. HARDWARE INCLUDED (NOT SHOWN): 1 GASKET & 1 MOUNTING RING

REV	ECO NO	DESCRIPTION	DATE	BY	E-SWITCH®				OBJECT ID
C	ECO-102903	REMOVED STOP ID PLATE FROM NOTE 13	08/06/24	MR	TITLE E200-R22-C10R				100125425
					SCALE	DATE	DR	DWG	REV
					1:1	10/3/2023	MJR	F022000	C

THE INFORMATION CONTAINED IN THIS DOCUMENT IS PROPRIETARY TO  
E-SWITCH AND IS NOT TO BE COPIED OR TRANSFERRED