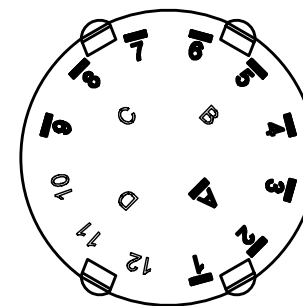
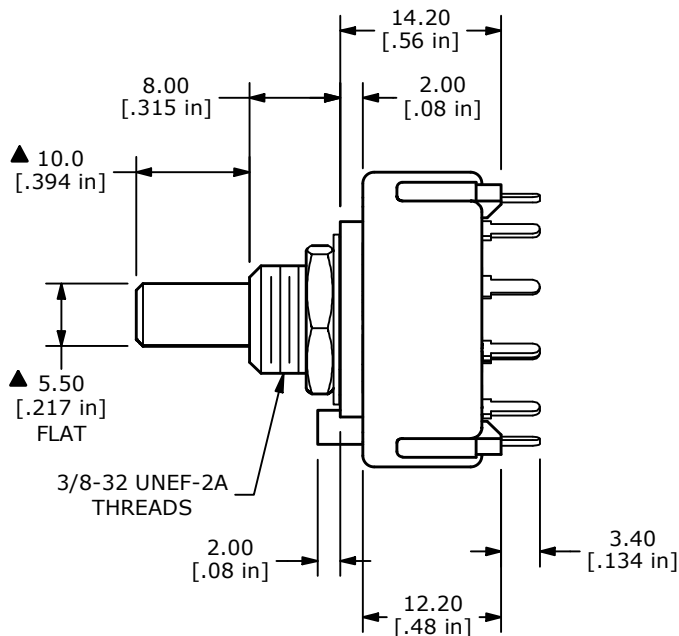
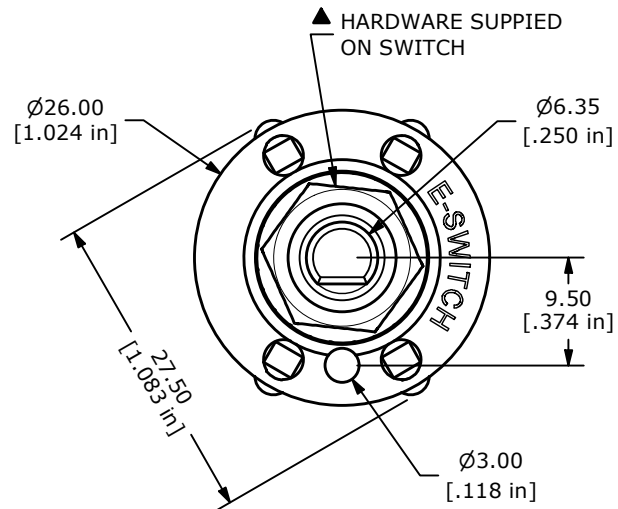
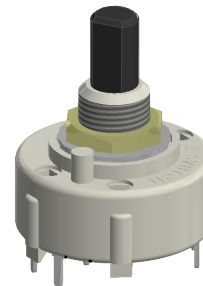
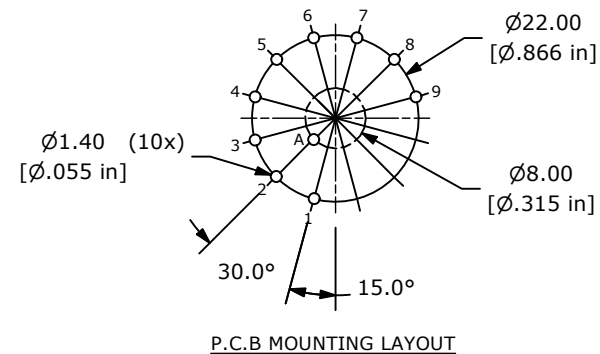


CONTACT CONFIGURATION
TIMING (BBM) NON-SHORTING



- NOTE:
1. ALL DIMENSIONS IN MM[INCH].
 2. GENERAL TOLERANCE: X.X = ± 0.4
X.XX = ± 0.25
 3. TERM. NOS. FOR REFERENCE ONLY.
 - ▲ 4. CONTACT MATERIAL: SILVER
 5. CONTACT RATING: 0.3A @ 125VAC
 6. OPERATING FORCE: 800 ± 300 gf-cm
 7. OPERATING TEMP: -30°C to 85°C
 - ▲ 8. CIRCUIT SP: 9 POSITION 30° INDEX
 9. DIELECTRIC STRENGTH: 500VAC FOR 1 MIN.
 - ▲ 10. HARDWARE SUPPLIED ON SWITCH: LOCKWASHER, HEXNUT
 11. ▲ DENOTES CRITICAL PARAMETER.



REV	ECO NO	DESCRIPTION	DATE	BY
A	ECO-103288	Release	03/17/25	MW



OBJECT ID
100129844

TITLE KC19A10.001NPS				
SCALE	DATE	DR	DWG	REV
3:2	3/11/2025	MW	G510623	A