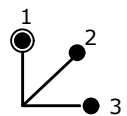


NOTES:

1. ALL DIMENSIONS IN MM[INCH]
2. GENERAL TOLERANCE: X.X = ±0.4
X.XX = ±0.25
3. TERM. NOS. FOR REFERENCE ONLY.
4. RATING: 4A @ 125VAC, 2A @ 250VAC
5. CONTACT RESISTANCE: 10 milli-OHMS
6. DIELECTRIC STRENGTH: 1,500 VAC-1Minute
7. CONTACTS: SILVER PLATED
8. HOUSING: NICKEL PLATED ZINC ALLOY
9. HARDWARE INCLUDED: HEXNUT
10. KEYS (2): BRASS

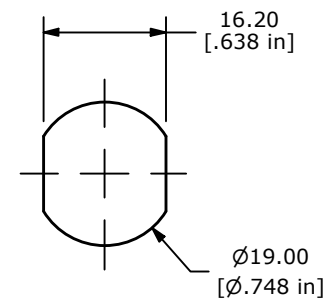


CIRCUIT: DP (45° INDEXING)
CONTACT CONFIGURATION

CONNECTED TERMINAL #		
POS. 1	POS. 2	POS. 3
8-1, 4-5	1-2, 5-6	2-3, 6-7

LEGEND

- = Detent positions
- ⊙ = Key pull possible in this position



RECOMMENDED
PANEL CUTOUT

REV	ECO NO	DESCRIPTION	DATE	BY
B	ECO-102688	Release	04/24/24	MW



OBJECT ID
000015450

TITLE KO130BA126

SCALE 1:1	DATE 12/8/1999	DR MM	DWG K200241	REV B
--------------	-------------------	----------	----------------	----------