

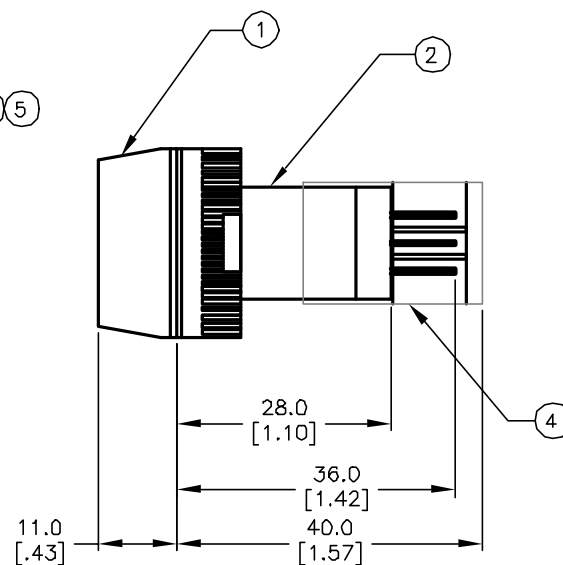
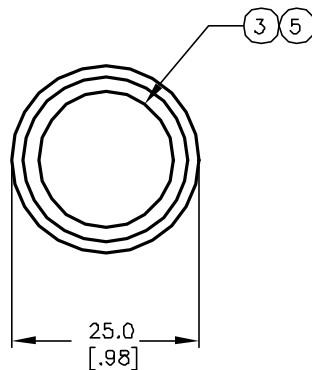
RECOMMENDED PANEL MOUNTING

1 o 2
3 o 4
a-(L)-b (+)

SPST
CONTACT CONFIGURATION

NOTES:

1. ALL DIMENSIONS IN MM
2. GENERAL TOLERANCE: X.X=±0.4
X.XX=±0.25
3. RATINGS: 5A @250V AC;
8A @125V AC
4. CONTACT MATERIAL:
COPPER ALLOY W/Silver Plating
5. LAMP VOLTAGE: 6V DC



PARTS LIST

Item	Qty.	Dwg. No.	Part No.
1	1	F051702	25mm RING FOR LA SERIES
2	1	F060621	LAKOAV110 (BODY)
3	1	F060255	25mm RED LENS
4	-	SUPPLIED	P16 PLASTIC TERMINAL PROTECTOR
5	1	F050417	50-004-17 (RED LED)

E-SWITCH®

TITLE

LAK DA V11 K RED RED

A	12133	RELEASED FOR PRODUCTION		
REV.	ECN No.	DESCRIPTION	DATE	CHKD

THE INFORMATION CONTAINED IN THIS DOCUMENT
IS PROPRIETARY TO E-SWITCH AND IS
NOT TO BE COPIED OR TRANSFERRED

SCALE

1:1

DATE

5/9/02

DR

CB

DWG

XF0447P

REV

A