

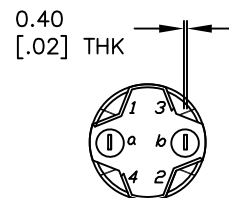
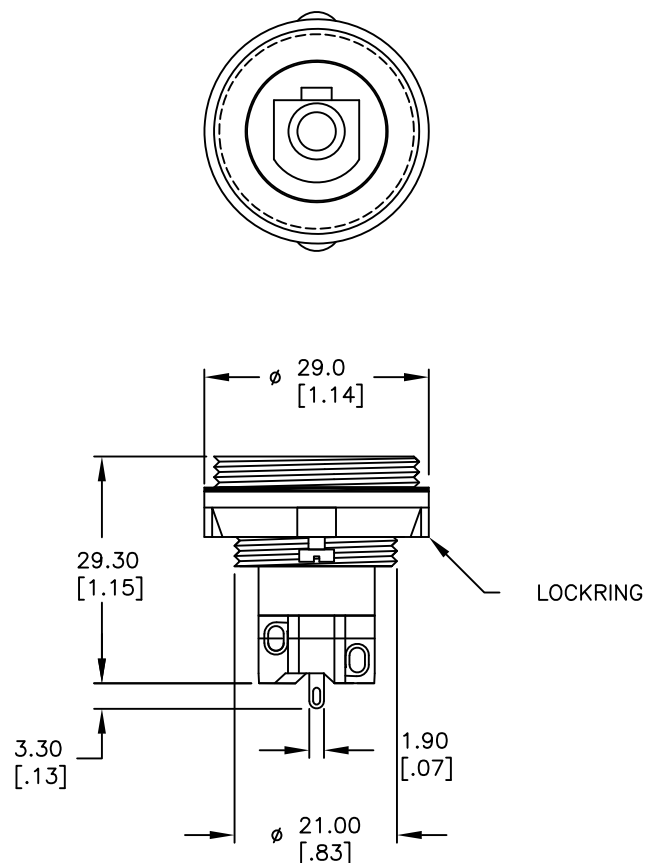
RECOMMENDED PANEL MOUNTING

1 o 2  
 3 o 4  
 a-(L)-b (+)

SPST  
 CONTACT CONFIGURATION

## NOTES:

1. ALL DIMENSIONS IN MM [INCH]
2. GENERAL TOLERANCE: X.X=±0.4  
X.XX=±0.25
3. RATINGS: 5A@250V AC,  
8A@125V AC
4. CONTACT MATERIAL: COPPER ALLOY W/Gold Plating
5. MECHANICAL LIFE: >100,000 Cycles
6. ELECTRICAL LIFE: >50,000 Cycles
7. INSULATION RESISTANCE: >1000 MILLI-OHMS
8. OPERATING TEMP: -20°C to 55°C
9. HARDWARE SUPPLIED: LOCK RING, GASKET

**E-SWITCH®**

TITLE

LAS EE U1 10 (LATCHING)

SCALE

1:1

DATE

10/17/02

DR

CJB

DWG

F060614

REV

A

THE INFORMATION CONTAINED IN THIS DOCUMENT  
 IS PROPRIETARY TO E-SWITCH AND IS  
 NOT TO BE COPIED OR TRANSFERRED

A	11899	RELEASED FOR PRODUCTION	10/17/02	CJB
REV.	ECN No.	DESCRIPTION	DATE	CHKD