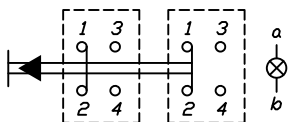
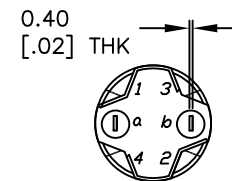
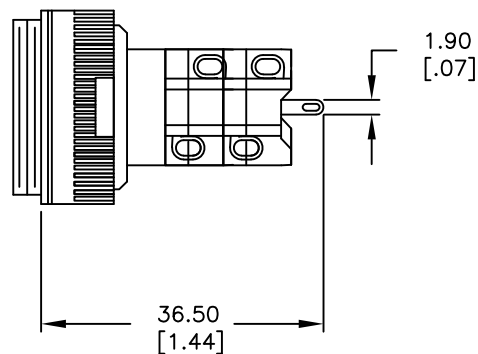
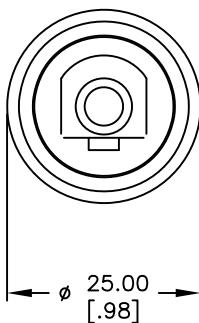


RECOMMENDED PANEL MOUNTING



DPST CONTACT CONFIGURATION



NOTES:

1. ALL DIMENSIONS IN MM [INCH]
2. GENERAL TOLERANCE: 0.0=±0.4  
0.00=±0.25
3. RATINGS: 250VAC @5A,  
125VAC @8A
4. TRAVEL: 3.0mm



A	11899	RELEASED FOR PRODUCTION	10/2/02	CJB
REV.	ECN No.	DESCRIPTION	DATE	CHKD

THE INFORMATION CONTAINED IN THIS DOCUMENT IS PROPRIETARY TO E-SWITCH AND IS NOT TO BE COPIED OR TRANSFERRED

TITLE				
LAS DA V1 20 (MOMENTARY)				
SCALE	DATE	DR	DWG	REV
1:1	--	--	F060607	A