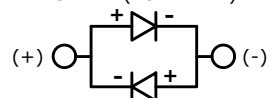
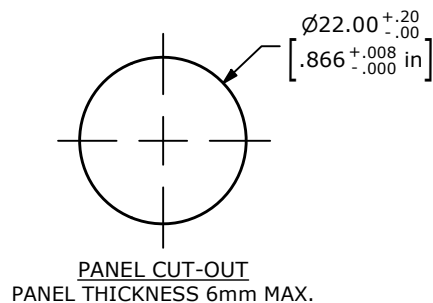


GREEN (FORWARD)



GREEN (REVERSE)

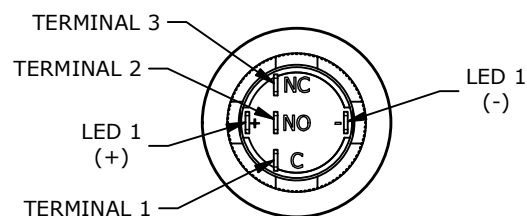
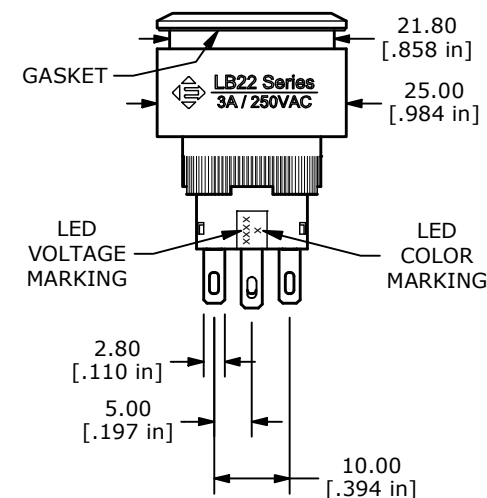
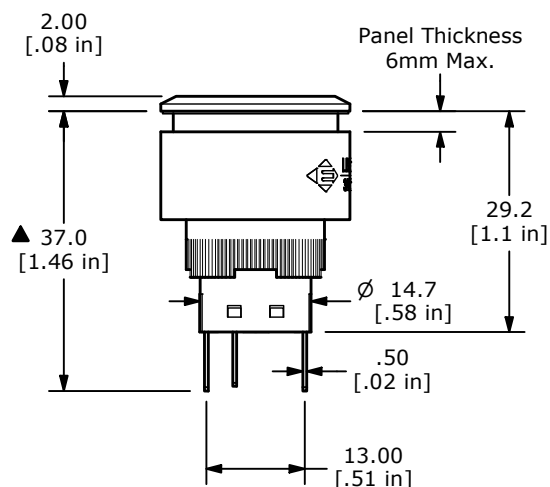
SCHEMATICON-ON
SPDT ILLUMINATED
LOCKING

Ø25.00
[Ø.984 in]

Ø17.90
[Ø.705 in]

▲ ACTUATOR (PLASTIC)
COLOR: TRANSPARENT GREEN
with GREEN LED

▲ BEZEL (PLASTIC)
COLOR: SILVER



NOTE:

1. ALL DIMENSIONS IN MM [INCH]
2. GENERAL TOLERANCE: X.X = ±0.4
X.XX = ±0.25
3. TERMINAL NUMBERS FOR REF ONLY
- ▲ 4. TERMINAL/CONTACT MATERIAL: SILVER PLATED
5. RATING: 3A @ 250VAC
6. CONTACT RESISTANCE: 50mΩ MAX. @ 1A 12VDC
7. ELECTRICAL LIFE: 50,000 MAKE-AND-BREAK CYCLES AT FULL LOAD
8. ACTUATION FORCE: 1 POLE (SP) 2.5 ±1.0N
9. MECHANICAL LIFE: 500,000 (LOCKING) CYCLES
10. INSULATION RESISTANCE: 1,000MΩ @ 500VDC MIN.
11. DIELECTRIC STRENGTH: 2,000 RMS @ SEA LEVEL
12. OPERATING TEMPERATURE: -20°C to 55°C
13. ▲ DENOTES CRITICAL PARAMETER.
- ▲ 14. LAMP VOLTAGE: 3V
15. TRAVEL: 3.2mm
16. MOUNTING NUT TORQUE: 0.3 - 0.5Nm
17. INGRESS PROTECTION: IP65
18. HARDWARE SUPPLIED: GASKET and MOUNTING NUT

REV	ECO NO	DESCRIPTION	DATE	BY	E-SWITCH®				OBJECT ID
A	ECO-100889	Release	08/18/22	MR	TITLE LB22F23Q3131				100121909
					SCALE	DATE	DR	DWG	REV
					1:1	4/29/2022	MW	T942004	A

THE INFORMATION CONTAINED IN THIS DOCUMENT IS PROPRIETARY TO
E-SWITCH AND IS NOT TO BE COPIED OR TRANSFERRED