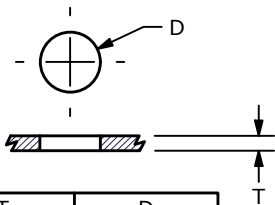
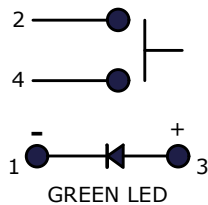


▲ LED SPECS	UNITS	GREEN
FORWARD CURRENT	mA	20
FORWARD VOLTAGE @ 20mA	V	2.1 typ.
LUMINOUS INTENSITY @ 20mA	MCD	400



T	D
1.3-2.2mm	7.7-8.3mm
2.2-3.0mm	8.3-8.9mm
3.0-3.6mm	8.9-9.2mm

RECOMMENDED CUTOUT



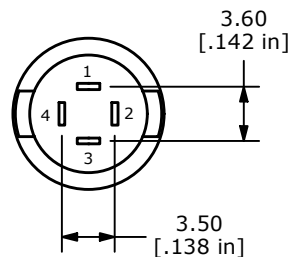
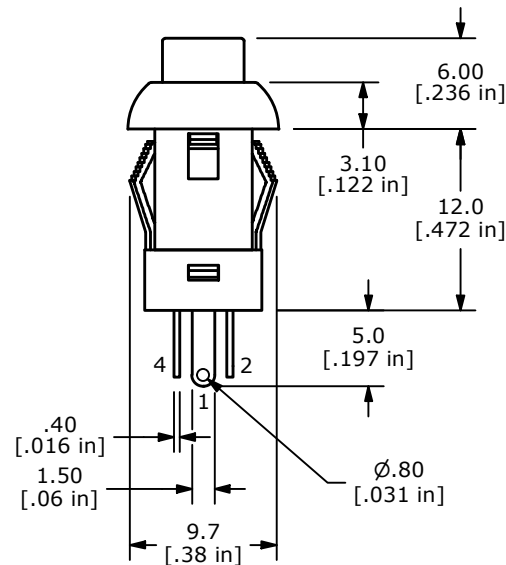
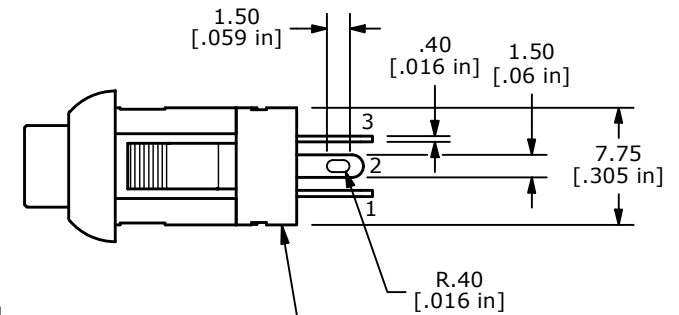
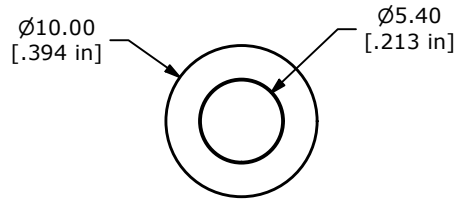
▲ CIRCUIT: SPST
OFF (ON)

NOTES:

- ALL DIMENSIONS IN MM [INCH]
- GENERAL TOLERANCE: X.X = ± 0.4
X.XX = ± 0.25
- RATING: 30VDC @ 100mA
- CONTACT RESISTANCE: 50m Ω MAX.
- INSULATION RESISTANCE: 100M Ω MIN @ 500VDC
- OPERATING FORCE: 250 \pm 100gf
- TRAVEL: 1.3 \pm 0.3mm
- OPERATING TEMPERATURE: -40°C to 85°C
- OPERATING LIFE: 50,000 CYCLES

▲ 10. LED: GREEN

11. ▲ DENOTES CRITICAL PARAMETERS



REV	ECO NO	DESCRIPTION	DATE	BY	E-SWITCH®				OBJECT ID
C	ECO-103244	Release	02/27/25	MW	TITLE LP10A1AG				000006543
					SCALE	DATE	DR	DWG	REV
					2:1	7/10/2008	rc	B200202	C

THE INFORMATION CONTAINED IN THIS DOCUMENT IS PROPRIETARY TO E-SWITCH AND IS NOT TO BE COPIED OR TRANSFERRED