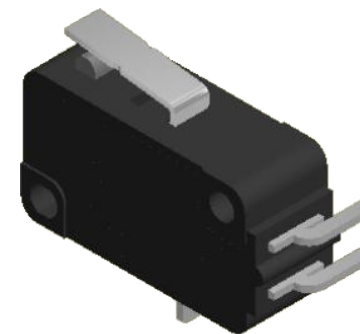
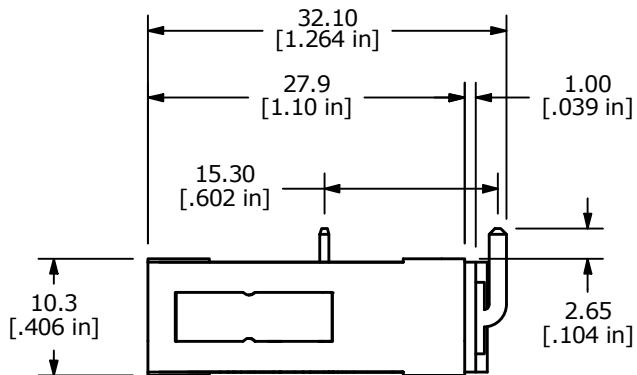
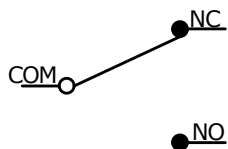


P.C. MOUNTING



O.P. (MM)	P.T. (MM)
15.3 ± 0.5	2.0 MAX.

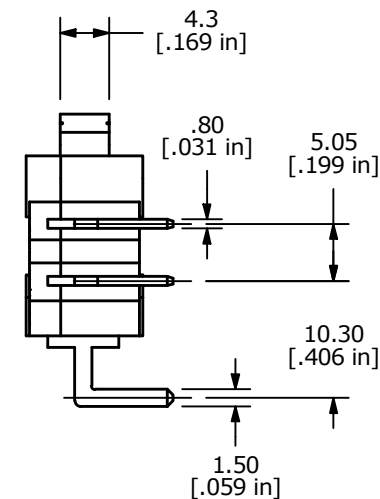
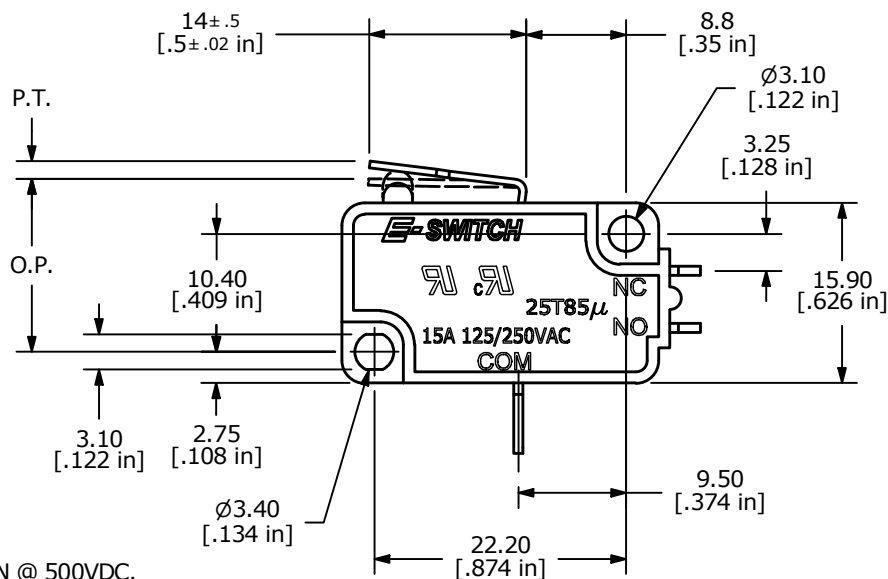
O.P. = OPERATING POINT
P.T. = PRE-TRAVEL



CIRCUIT: SPDT

NOTES:

1. ALL DIMENSIONS IN MM [INCH]
2. GENERAL TOLERANCE: X.X = ± 0.4
X.XX = ± 0.25
- ▲ 3. RATING: 15A @ 125/250 VAC-UL, CUL
- ▲ 4. OPERATING FORCE: 160 ± 40 gf
5. OPERATING TEMP: -25°C to 85°C
6. ELECTRICAL LIFE: 50,000 CYCLES MIN.
7. MECHANICAL LIFE: 1,000,000 CYCLES TYP.
8. INSULATION RESISTANCE: 100 MEGA-OHMS MIN @ 500VDC.
9. DIELECTRIC STRENGTH: 1500VAC 1 MINUTE (INITIAL VALUE)
10. CONTACT RESISTANCE: 100 MILLI -OHMS MAX.
11. ▲ DENOTES CRITICAL PARAMETER.



REV	ECO NO	DESCRIPTION	DATE	BY
B	ECO-100844	REMOVE VDE RATING AND LOGO	05/03/22	JS



OBJECT ID
000021099

TITLE LS0851501F160V1A		SCALE 3:2	DATE 6/23/2015	DR MW	DWG Q950115	REV B
---------------------------	--	--------------	-------------------	----------	----------------	----------