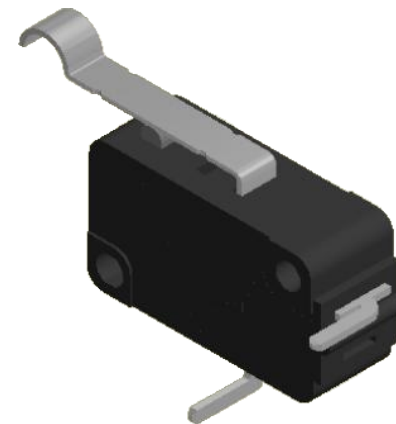
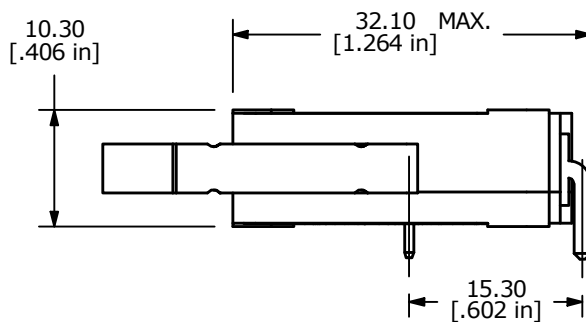
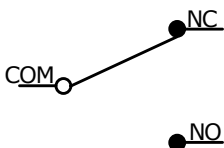


PANEL MOUNTING

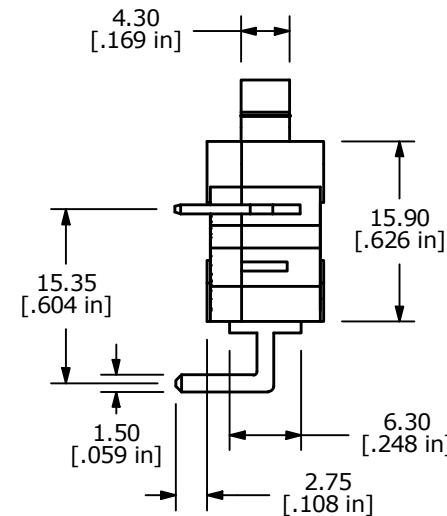
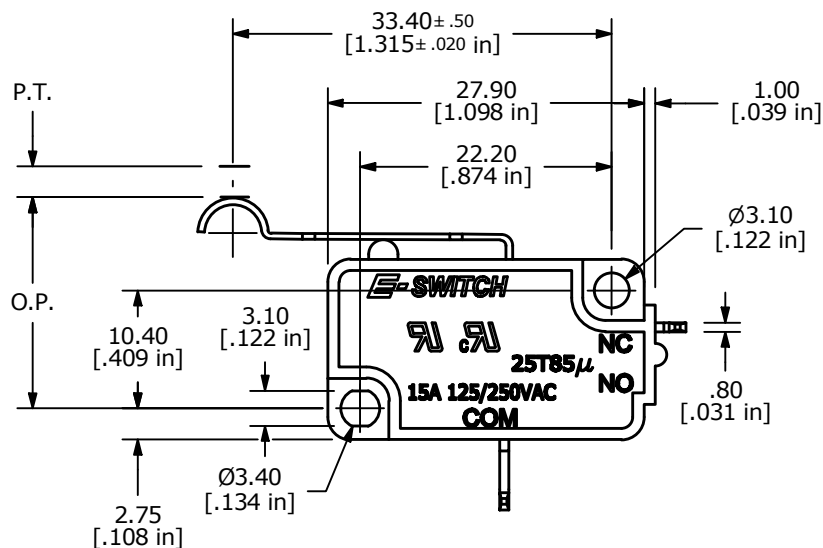


O.P. (MM)	P.T. (MM)
19.0 ± 1.5	5.2 MAX.

O.P. = OPERATING POINT
P.T. = PRE-TRAVEL



CIRCUIT: SPDT



NOTES:

1. ALL DIMENSIONS IN MM [INCH]
2. GENERAL TOLERANCE: X.X = ± 0.25
X.XX = ± 0.25
3. RATING: 15A @ 125/250 VAC-UL, CUL
4. OPERATING FORCE: 50 ± 20 GRAMS
5. OPERATING TEMP: -25°C TO 85°C
6. ELECTRICAL LIFE: 50,000 CYCLES MIN.
7. MECHANICAL LIFE: 500,000 CYCLES TYP.
8. INSULATION RESISTANCE: 100 MEGA-OHMS MIN.
9. DIELECTRIC STRENGTH: 1500VAC 1 MINUTE (INITIAL VALUE)
10. CONTACT RESISTANCE: 100 MILLI -OHMS MAX.
11. CONTACT MATERIAL: SILVER
12. ▲ DENOTES CRITICAL PARAMETER.

REV	ECO NO	DESCRIPTION	DATE	BY
B	ECO-100828	REMOVE VDE RATING AND LOGO	04/11/22	JS



OBJECT ID
000021034

TITLE LS0851504F050V2B

SCALE	DATE	DR	DWG	REV
3:2	10/9/2007	BF	Q950047	B