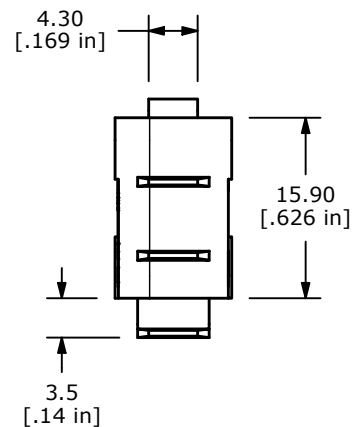
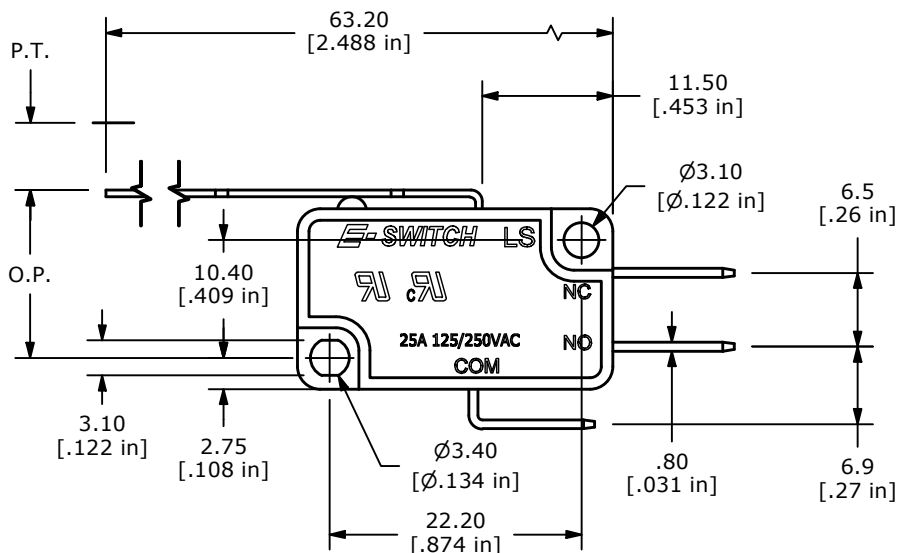
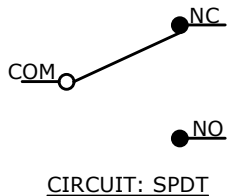


O.P. (MM)	P.T. (MM)
12.05±2.0	9.7 MAX.

O.P. = OPERATING POINT
P.T. = PRE-TRAVEL



- NOTES:
1. ALL DIMENSIONS IN MM [INCH]
 2. GENERAL TOLERANCE: X.X±0.4
X.XX±0.25
 3. RATING: 25A @125/250VAC UL, CUL APPROVED
 4. OPERATING FORCE: 90±40gf
 5. OPERATING TEMP: -25°C TO 85°C
 6. ELECTRICAL LIFE: 10,000 CYCLES MIN.
 7. MECHANICAL LIFE: 1,000,000 CYCLES TYP.
 8. INSULATION RESISTANCE: 100 MEGA-OHMS MIN.
 9. DIELECTRIC STRENGTH: 1500VAC 1 MINUTE (INITIAL VALUE)
 10. CONTACT RESISTANCE: 100 MILLI -OHMS MAX.
 11. ▲ DENOTES CRITICAL PARAMETER.

REV	ECO NO	DESCRIPTION	DATE	BY	E-SWITCH®			OBJECT ID	
A	ECO-103352	RELEASE	06/10/25	JS				100130197	
					TITLE LS2503F090C2A				
					SCALE	DATE	DR	DWG	REV
					3:2	4/30/2025	JS	Q952003	A