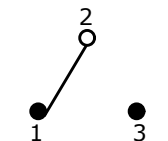


P.C. MOUNTING

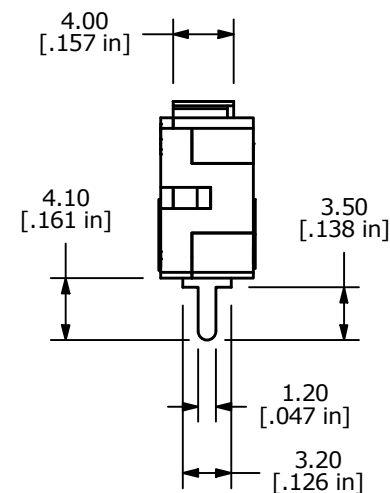
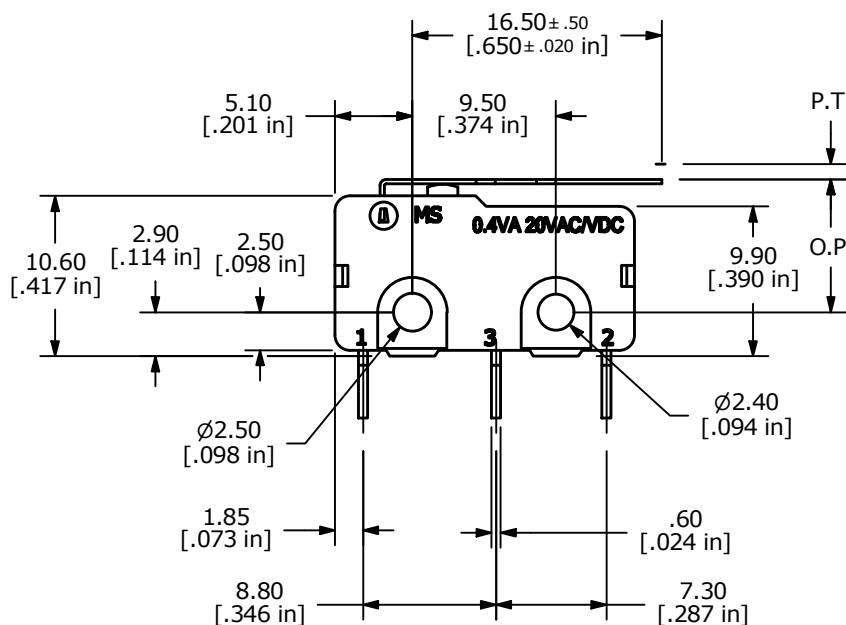
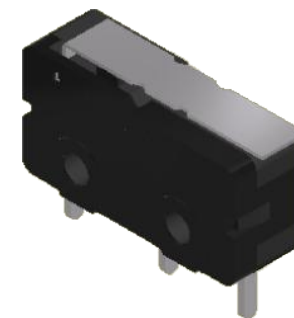
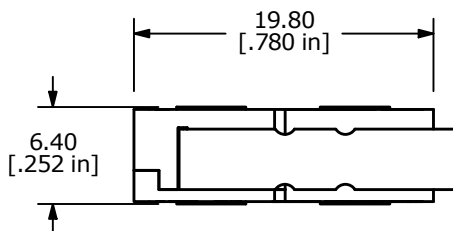
O.P. (MM)	P.T. (MM)
9.1 ± 0.8	3.8 MAX

O.P. = OPERATING POINT  
P.T. = PRE-TRAVEL



CIRCUIT: SPDT

- NOTES:
1. ALL DIMENSIONS IN MM [INCH]
  2. GENERAL TOLERANCE: X.X=± 0.4  
X.XX=± 0.25
  3. RATING: 0.4VA @20VAC OR DC
  - ▲ 4. OPERATING FORCE: 045± 20 GRAMS
  5. OPERATING TEMP: -25°C TO 85°C
  6. ELECTRICAL LIFE: 50,000 CYCLES MIN.
  7. MECHANICAL LIFE: 1,000,000 CYCLES TYP.
  8. INSULATION RESISTANCE: 100 MEGA-OHMS
  9. DIELECTRIC STRENGTH: 1000VAC 1 MINUTE (INITIAL VALUE)
  10. CONTACT RESISTANCE: 100 MILLI-OHMS MAX.
  - ▲ 11. CONTACTS: 10 MICRO INCHES MINIMUM GOLD PLATING (PN: Q990001)
  12. ▲ DENOTES CRITICAL PARAMETER.



REV	ECO NO	DESCRIPTION	DATE	BY
C	ECO-100774	REMOVE VDE RATING AND LOGO	03/14/22	JS



OBJECT ID  
000021196

TITLE MS085R102F045P1A				
SCALE	DATE	DR	DWG	REV
2:1	7/3/2006	CT	Q970060	C

THE INFORMATION CONTAINED IN THIS DOCUMENT IS PROPRIETARY TO E-SWITCH AND IS NOT TO BE COPIED OR TRANSFERRED