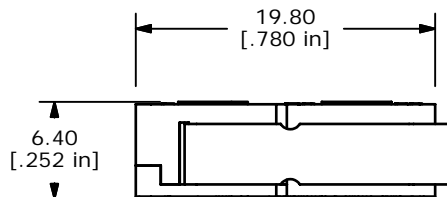
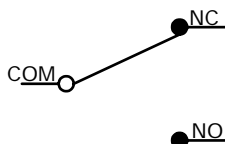


ISOMETRIC



O.P. (MM)	P.T. (MM)
10.9±1.0	3.2 MAX

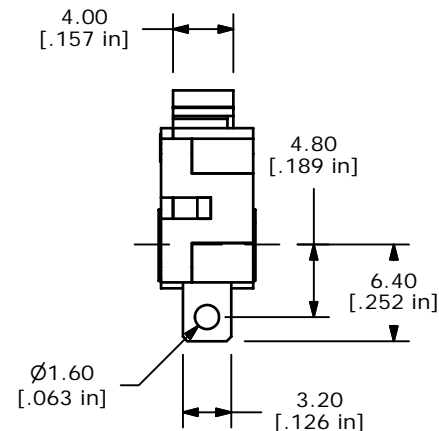
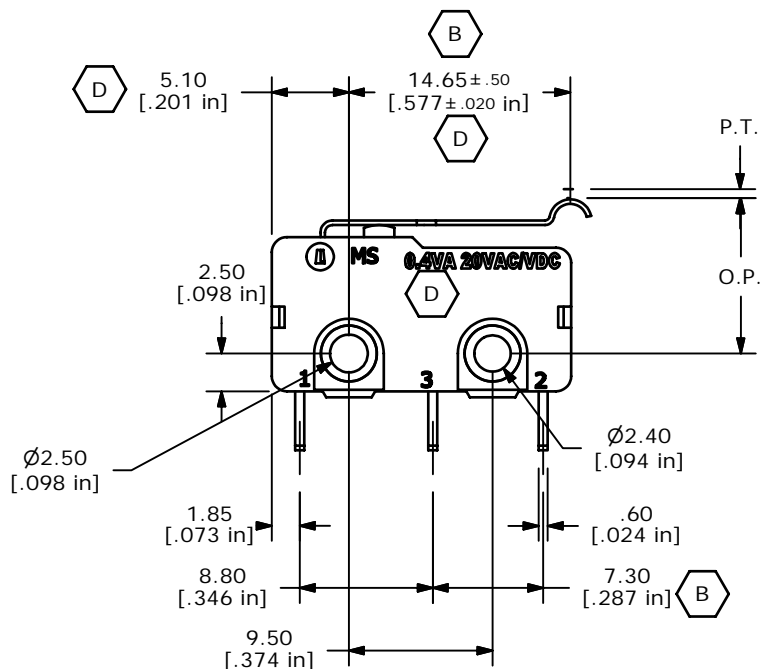
O.P. = OPERATING POINT  
P.T. = PRE-TRAVEL



**B** CIRCUIT: SPDT

NOTES:

1. ALL DIMENSIONS IN MM [INCH]
2. GENERAL TOLERANCE: X.X=±0.4  
X.XX=±0.25
3. RATING: 0.4VA @20VAC OR DC
- ▲ 4. OPERATING FORCE: 35±20 GRAMS
5. OPERATING TEMP: -25°C TO 85°C
6. ELECTRICAL LIFE: 50,000 CYCLES MIN.
7. MECHANICAL LIFE: 1,000,000 CYCLES TYP.
8. INSULATION RESISTANCE: 100 MEGA-OHMS
9. DIELECTRIC STRENGTH: 1000VAC 1 MINUTE (INITIAL VALUE)
10. CONTACT RESISTANCE: 100 MILLI-OHMS MAX.
- ▲ 11. CONTACTS: 10 MICRO INCHES MINIMUM GOLD PLATING (PN: Q990001)
12. ▲ DENOTES CRITICAL PARAMETER
13. 2002/95/EC (ROHS) COMPLIANT



REV	PCR NO	DESCRIPTION	DATE	BY
D	15649	CHANGES NOTED	1/3/06	PH
C	15115	REMOVE UL, CUL, AND VDE	7/27/05	BK
B	14969	CHANGED NOTES AND DIMENSIONS	6/2/05	JB
A	14946	RELEASED FOR PRODUCTION	5/27/05	JB

**E-SWITCH®**

TITLE MS085R104F035S1A

SCALE	DATE	DR	DWG	REV
2:1	5/27/2005	JB	Q970014	D

THE INFORMATION CONTAINED IN THIS DOCUMENT IS PROPRIETARY TO E-SWITCH AND IS NOT TO BE COPIED OR TRANSFERRED