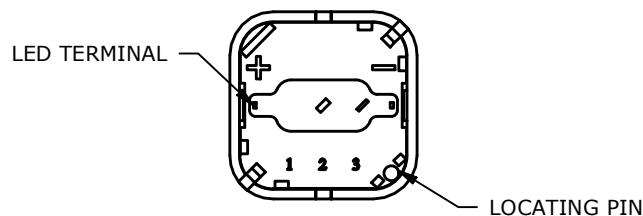
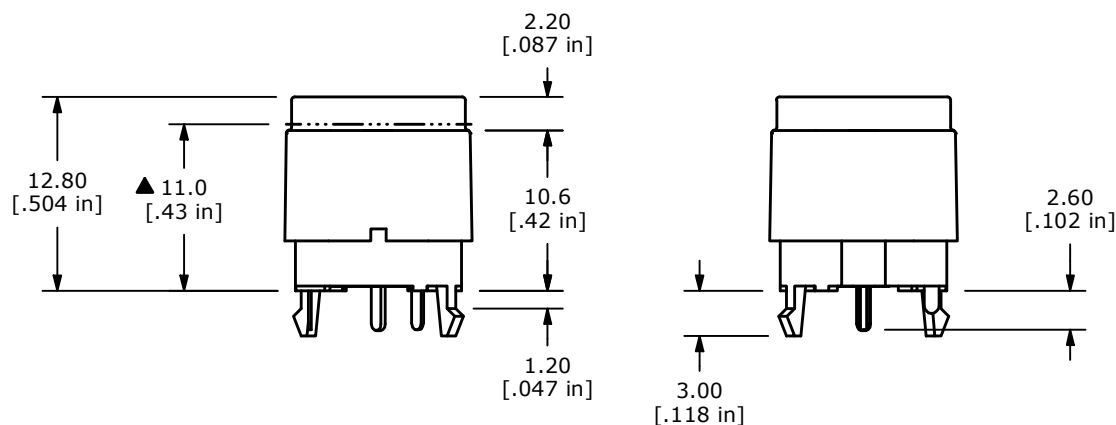
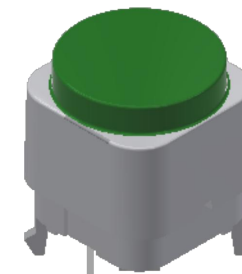
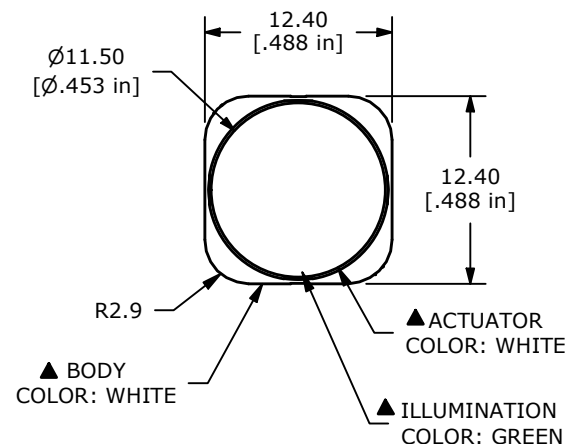



LED COLOR: GREEN

▲ CIRCUIT: SPST

NOTES:

1. ALL DIMENSIONS IN MM [INCH]
2. GENERAL TOLERANCE: X.X =  $\pm 0.4$   
X.XX =  $\pm 0.25$
3. TERMINAL NUMBERS FOR REF. ONLY
- ▲ 4. RATING: 30mA @ 28VDC
5. TRAVEL: ELECTRICAL MAKE:  $11.0 \pm 0.2\text{mm}$   
FULL TRAVEL:  $2.0 \pm 0.30\text{mm}$
6. OPERATING FORCE: 430  $\pm 102\text{gf}$
7. ELECTRICAL LIFE: 20,000 CYCLES
8. MECHANICAL LIFE 500,000 CYCLES
9. OPERATING TEMP. -40°C TO 85°C
10. ▲ DENOTES CRITICAL PARAMETER
11. CONTACTS: BRASS, GOLD PLATED  
TERMINALS: BRASS, GOLD FLASH PLATED



| REV  | ECO NO     | DESCRIPTION                   | DATE     | BY | <div> E-SWITCH®</div> |                    |          |                |          | OBJECT ID |
|--|------------|-------------------------------|----------|----|--|--------------------|----------|----------------|----------|-----------|
| B  | ECO-102679 | 11.0 WAS 11.8 AND 430 WAS 490 | 05/03/24 | JS | TITLE PB350STRG  |                    |          |                |          | 100126361 |
| A  | ECO-102373 | RELEASE                       | 12/18/23 | JS |  |                    |          |                |          |           |
|  |            |                               |          |    |  |                    |          |                |          |           |
| THE INFORMATION CONTAINED IN THIS DOCUMENT IS PROPRIETARY TO E-SWITCH AND IS NOT TO BE COPIED OR TRANSFERRED |            |                               |          |    | SCALE<br>2:1   | DATE<br>12/12/2023 | DR<br>JS | DWG<br>T003504 | REV<br>B |           |