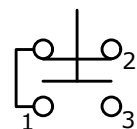


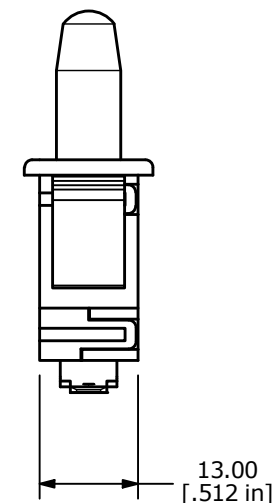
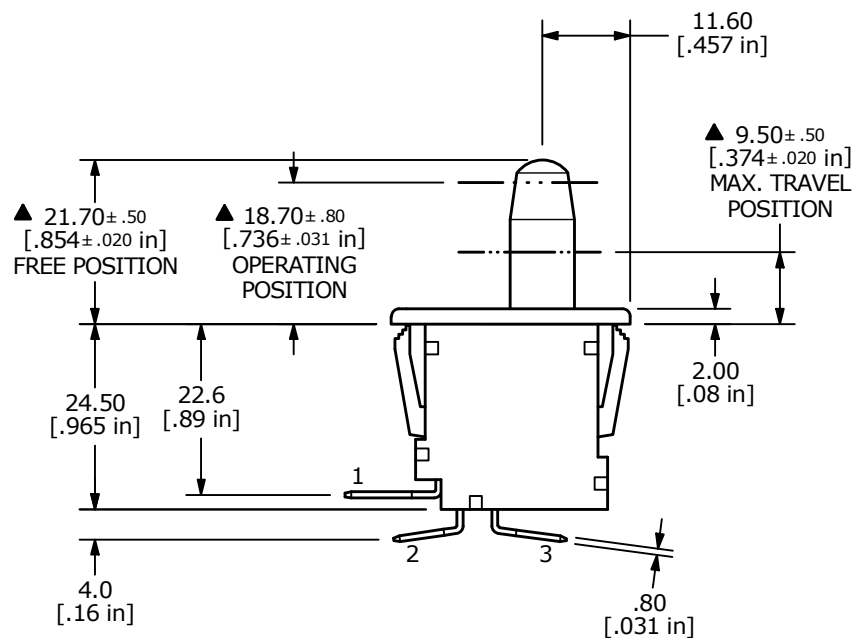
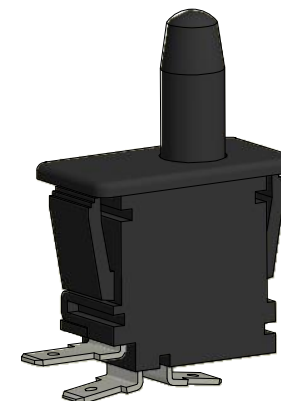
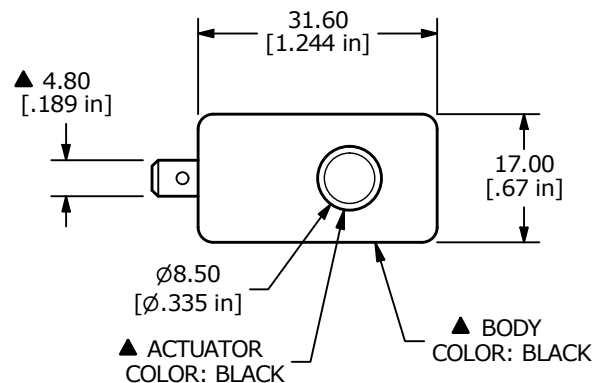
PANEL CUTOUT
MAX PANEL THICKNESS 1.5mm



▲ CONTACT CONFIGURATION
SPDT
ON - (ON)
() = MOMENTARY

NOTES:

1. ALL DIMENSIONS IN MM
2. GENERAL TOLERANCE: X.X = ± 0.4
X.XX = ± 0.25
3. TERM. NUMBERS FOR REFERENCE ONLY
4. ELECTRICAL LIFE: 6,000 CYCLES
5. OPERATING TEMP: 0°C to 85°C
6. CONTACT RESISTANCE: 30m Ω MAX. INITIAL
7. ▲ DENOTES CRITICAL PARAMETER
8. CONTACT RATING: UL 16A 125VAC, 12A 250VAC, 1HP 125/250VAC



REV	ECO NO	DESCRIPTION	DATE	BY	E-SWITCH®				OBJECT ID
A	ECO-100261	Release	10/06/21	MW	TITLE PP1-DB7-1A1				100117761
					SCALE	DATE	DR	DWG	REV
					1:1	8/11/2021	MW	34-PP1DB71A1	A

THE INFORMATION CONTAINED IN THIS DOCUMENT IS PROPRIETARY TO
E-SWITCH AND IS NOT TO BE COPIED OR TRANSFERRED