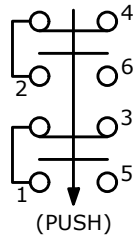


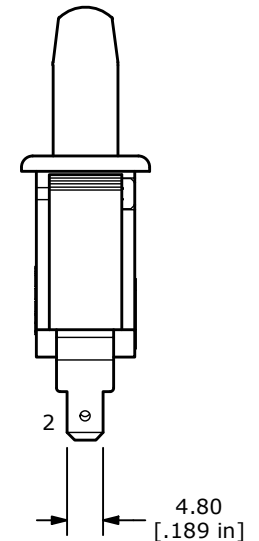
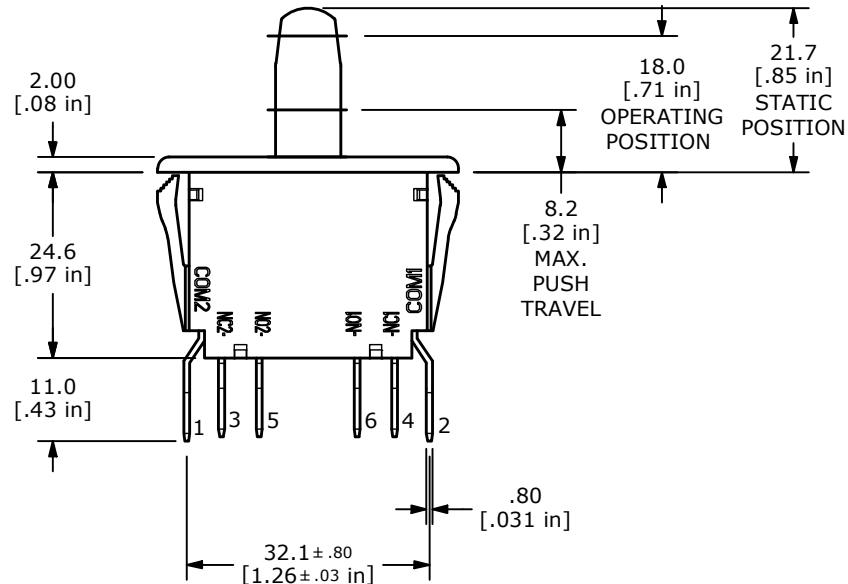
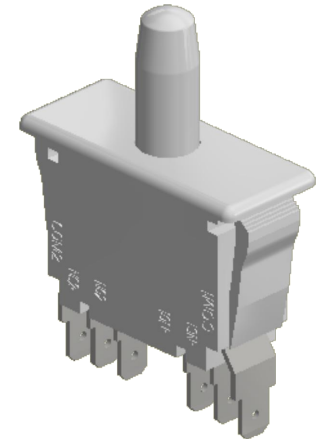
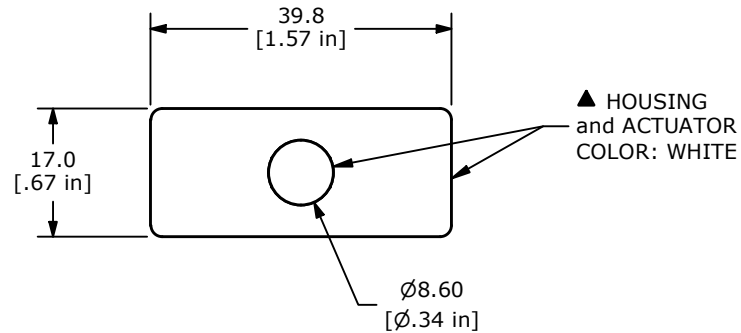
▲ **SWITCH FUNCTION**

| POS. 1 | POS. 2 |
|----------|----------|
| | |
| ON | (ON) |
| 1-3, 4-2 | 1-5, 6-2 |

(ON)=MOMENTARY

▲ **CONTACT CONFIGURATION****NOTES:**

1. ALL DIMENSIONS IN MM
2. GENERAL TOLERANCE: X.X = ± 0.5
X.XX = ± 0.3
3. TERM. NOS. FOR REFERENCE ONLY
4. RATINGS: 16A 125VAC (cURus)
12A 250VAC (cURus)
1HP 125/250VAC (cURus)
10R(4)A 277VAC (cURus)
5. ELECTRICAL LIFE: 6,000 CYCLES
6. MECHANICAL LIFE: 50,000 CYCLES
7. CONTACT RESISTANCE: 10m Ω MAX. INITIAL
8. OPERATING TEMP: 0°C to 85°C
9. MATERIALS: BODY/ACTUATOR: POLYAMIDE 6/6 (PA66)
CONTACTS: SILVER ALLOY
TERMINALS: SILVER PLATED BRASS
10. ▲ DENOTES CRITICAL PARAMETER



| REV | ECO NO | DESCRIPTION | DATE | BY | E-SWITCH® | | | | OBJECT ID |
|-----|------------|------------------------------|----------|----|-------------------|-----------|-----|--------------|-----------|
| E | ECO-103364 | UPDATED TO CURRENT STANDARDS | 04/22/25 | JS | TITLE PP2-1H7-2A2 | | | | 000001007 |
| | | | | | SCALE | DATE | DR | DWG | REV |
| | | | | | 1:1 | 9/28/2010 | CAB | 34-PP21H72A2 | E |

THE INFORMATION CONTAINED IN THIS DOCUMENT IS PROPRIETARY TO E-SWITCH AND IS NOT TO BE COPIED OR TRANSFERRED