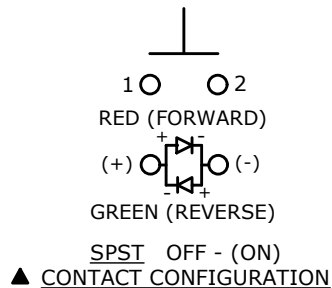


▲ SWITCH FUNCTION

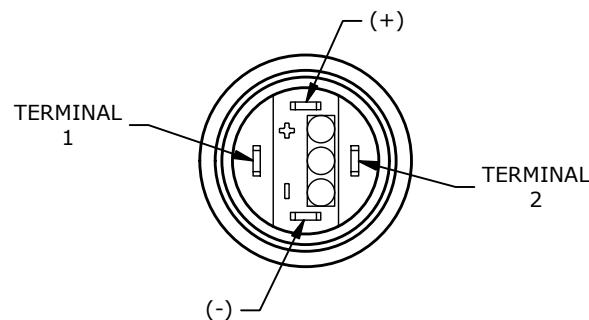
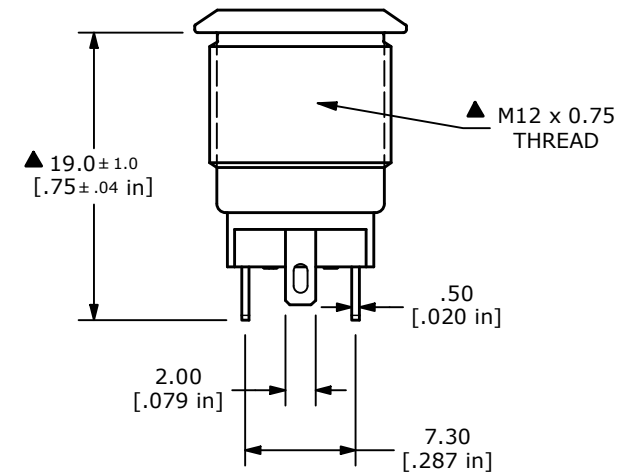
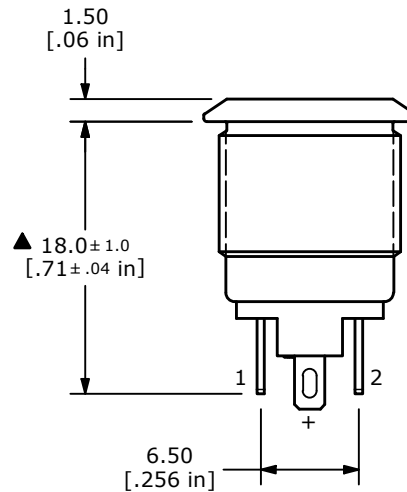
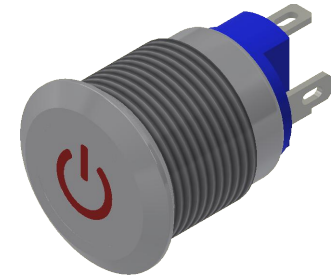
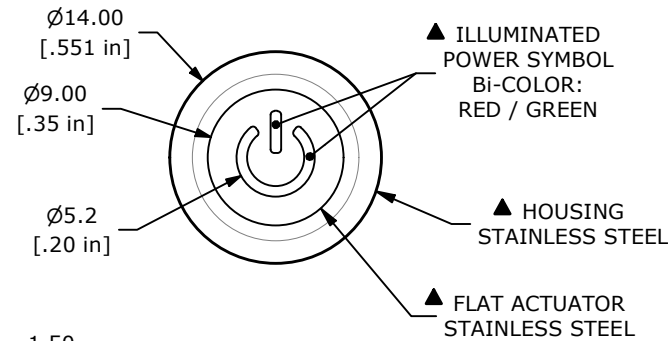
POS. 1	POS. 2
OFF	(ON)
OPEN	1-2

(ON) = MOMENTARY



NOTE:

- ALL DIMENSIONS IN MM [INCH]
- GENERAL TOLERANCE: X.X = ± 0.4
X.XX = ± 0.25
- TERMINAL NOS. FOR REF. ONLY
- RATING: 2A @ 36VDC
- CONTACT RESISTANCE: 50mΩ MAX. @ 1A 12VDC
- INSULATION RESISTANCE: 1,00MΩ @ 500VDC
- DIELECTRIC STRENGTH: 1,500V, RMS 50Hz, 1min
- ELECTRICAL LIFE: 200,000 CYCLES
9. CONTACT MATERIAL: SILVER
- OPERATING TEMPERATURE: -40°C to 85°C
- INGRESS PROTECTION: IP65
- LED VOLTAGE: 1.8V 20mA (Forward), 2.8V 20mA (Reverse)
- ▲ DENOTES CRITICAL PARAMETER
- HARDWARE INCLUDED: HEX NUT AND O-RING (NOT SHOWN)



REV	ECO NO	DESCRIPTION	DATE	BY	E-SWITCH®				OBJECT ID
C	ECO-102873	update print	08/01/24	MW	PV0F240SS-5G1				000002277
					SCALE	DATE	DR	DWG	REV
					2:1	5/18/2018	MW	52-PV0F240SS5G1	C

THE INFORMATION CONTAINED IN THIS DOCUMENT IS PROPRIETARY TO E-SWITCH AND IS NOT TO BE COPIED OR TRANSFERRED