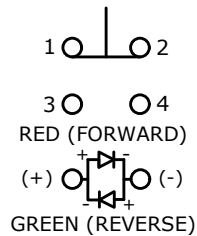


▲ SWITCH FUNCTION

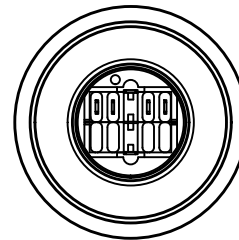
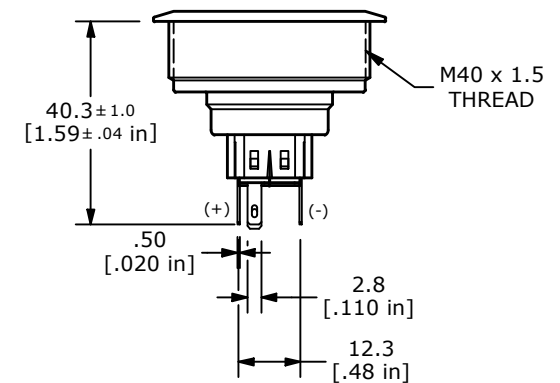
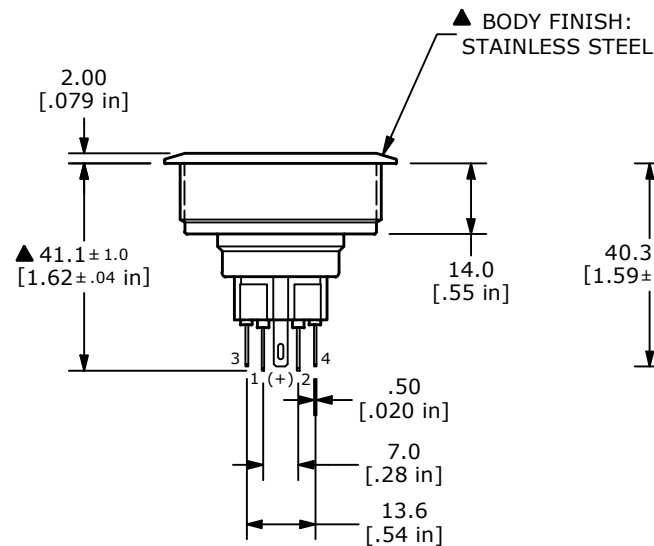
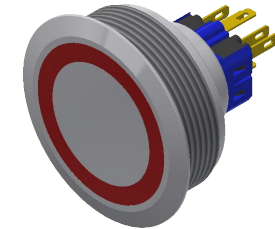
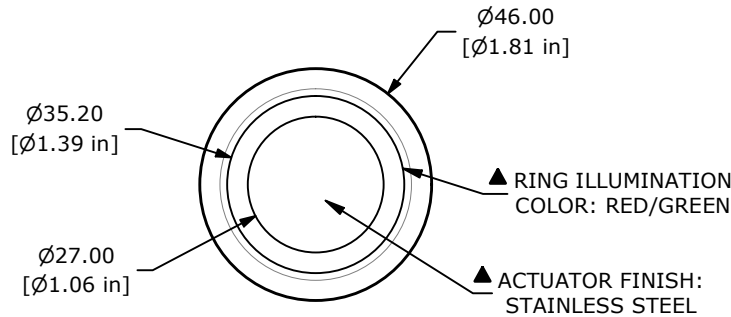
POS. 1	POS. 2
1-2 ON 3-4 OFF	1-2 OFF 3-4 ON



▲ SPDT ON-OFF / OFF-ON  
CONTACT CONFIGURATION

## NOTE:

- ALL DIMENSIONS IN MM [INCH]
- GENERAL TOLERANCE: X.X =  $\pm 0.4$   
X.XX =  $\pm 0.25$
- TERMINAL NUMBERS FOR REF. ONLY
- RATING: 2A @ 48VDC
- CONTACT RESISTANCE: 50m $\Omega$  MAX. @ 1A 12VDC
- INSULATION RESISTANCE: 1,000M $\Omega$  @ 500VDC
- DIELECTRIC STRENGTH: 2,000VAC MIN. FOR 1 MINUTE
- ELECTRICAL LIFE: 50,000 CYCLES
- OPERATING TEMPERATURE: -35°C to 85°C
- INGRESS PROTECTION: IP65
11. SUPPLIED HARDWARE: O-RING AND HEXNUT
- ▲ DENOTES CRITICAL PARAMETER
13. ILLUMINATION VOLTAGE: 1.8V (FORWARD)/ 2.8V (REVERSE)



REV	ECO NO	DESCRIPTION	DATE	BY	E-SWITCH®				OBJECT ID
B	ECO-103428	TEMP CHANGE -35C TO 85C WAS -20C TO 55C	08/05/25	JS	TITLE PV10F2T0SS-3G1				100124145
					SCALE	DATE	DR	DWG	REV
					2:3	4/10/2023	JS	52-PV10F2T0SS3G1	B

THE INFORMATION CONTAINED IN THIS DOCUMENT IS PROPRIETARY TO  
E-SWITCH AND IS NOT TO BE COPIED OR TRANSFERRED