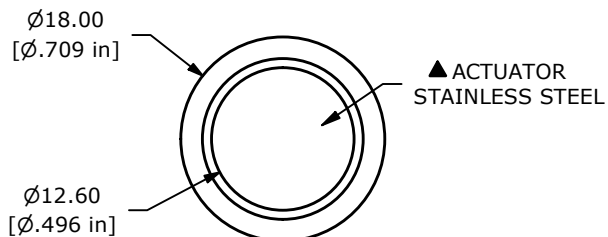


RECOMMENDED PANEL CUTOUT  
MAX. PANEL THICKNESS 8mm

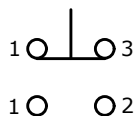


▲ ACTUATOR  
STAINLESS STEEL

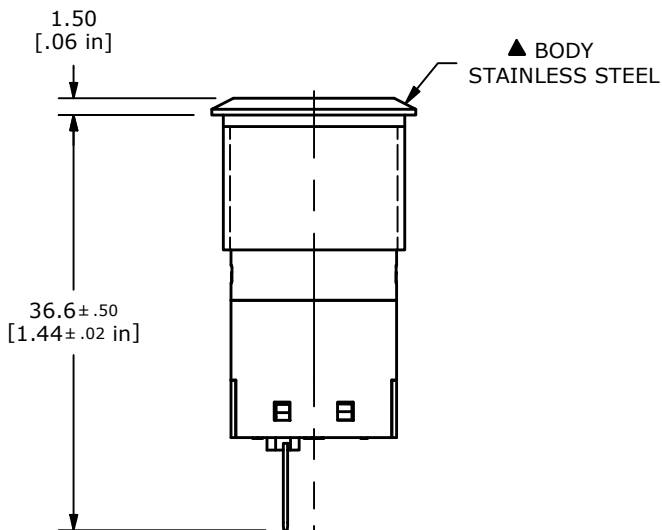


SWITCH FUNCTION	
POS. 1	POS. 2
ON	(ON)
1-3	1-2

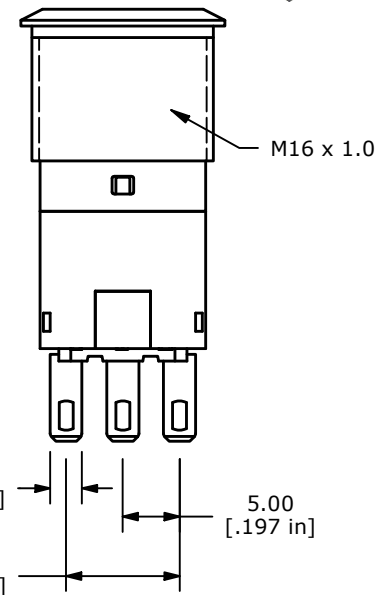
(ON) = MOMENTARY



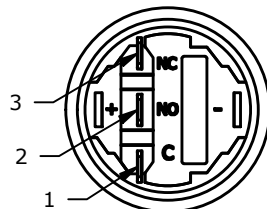
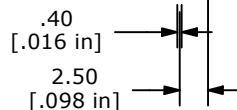
▲ SPDT ON-(ON)  
CONTACT CONFIGURATION



▲ BODY  
STAINLESS STEEL



M16 x 1.0



NOTE:

- ALL DIMENSIONS IN MM [INCH]
- GENERAL TOLERANCE: X.X = ±0.4  
X.XX = ±0.25
- TERMINAL NUMBERS FOR REF ONLY
- CONTACT MATERIAL: SILVER
- RATING: 2A 24VDC  
5A 220VAC
- ELECTRIC LIFE: 50,000 MAKE-AND-BREAK CYCLES  
AT FULL LOAD.
- INSULATION RESISTANCE: 1,000 MΩ MIN.
- DIELECTRIC STRENGTH: 1,500 VAC MIN. FOR 1 MINUTE
- CONTACT RESISTANCE: 50mΩ MAX. @ 1A 12VDC
- OPERATING TEMP.: -40°C to 85°C
- ▲ DENOTES CRITICAL PARAMETER.
- HARDWARE SUPPLIED: O-RING AND HEXNUT
- INGRESS RATING: IP67
- LAMP VOLTAGE: NO LAMP

REV	ECO NO	DESCRIPTION	DATE	BY		OBJECT ID 100130628
B	ECO-104122	CORRECT TERMINAL BASE	05/21/26	JS		
					TITLE	PV16F2B0SS
THE INFORMATION CONTAINED IN THIS DOCUMENT IS PROPRIETARY TO E-SWITCH AND IS NOT TO BE COPIED OR TRANSFERRED			SCALE	DATE	DR	DWG
			3:2	7/17/2025	JS	52-PV16F2B0SS
						REV
						B