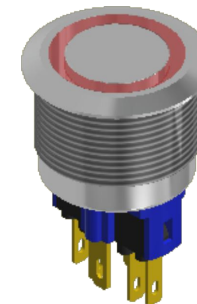
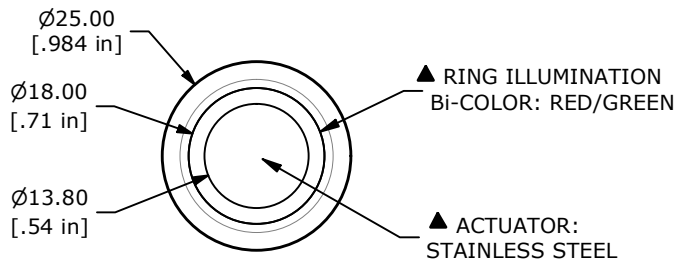
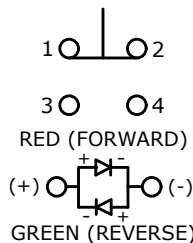


RECOMMENDED PANEL CUTOUT  
MAX. PANEL THICKNESS 8mm

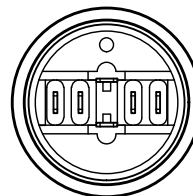
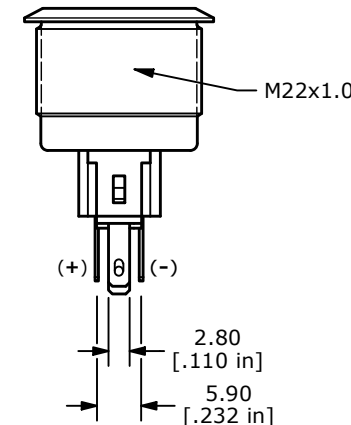
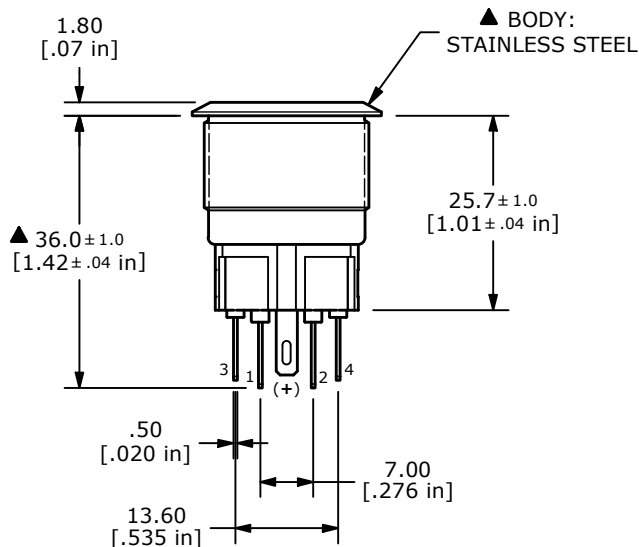


SWITCH FUNCTION	
POS. 1	POS. 2
1-2 ON 3-4 OFF	1-2 (OFF) 3-4 (ON)

( ) = MOMENTARY



▲ SPDT ON-(OFF) / OFF-(ON)  
CONTACT CONFIGURATION



NOTE:

1. ALL DIMENSIONS IN MM [INCH]
2. GENERAL TOLERANCE: X.X = ± 0.4  
X.XX = ± 0.25
3. TERMINAL NOS. FOR REF. ONLY
4. RATING: 2A @ 48VDC
5. CONTACT RESISTANCE: 50mΩ MAX. @ 1A 12VDC
6. INSULATION RESISTANCE: 1,000MΩ @ 500VDC
7. DIELECTRIC STRENGTH: 2,000VAC MIN. FOR 1 MINUTE
8. ELECTRICAL LIFE: 50,000 CYCLES
9. OPERATING TEMPERATURE: -35°C to 85°C
10. INGRESS PROTECTION: IP65
11. ▲ DENOTES CRITICAL PARAMETER
- ▲ 12. ILLUMINATION VOLTAGE: 1.8V (RED), 2.8V (GREEN)
- ▲ 13. HARDWARE INCLUDED: HEX NUT and O-RING (NOT SHOWN)

REV	ECO NO	DESCRIPTION	DATE	BY
C	ECO-103873	Print update	01/16/26	MW



OBJECT ID  
000003027

TITLE PV7F2Y0SS-3G1		SCALE 1:1	DATE 4/24/2012	DR CAB	DWG 52-PV7F2Y0SS3G1	REV C
------------------------	--	--------------	-------------------	-----------	------------------------	----------