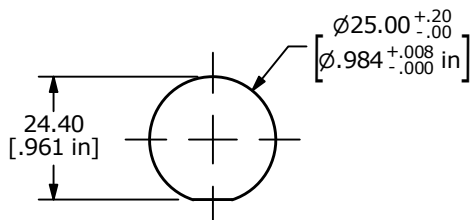
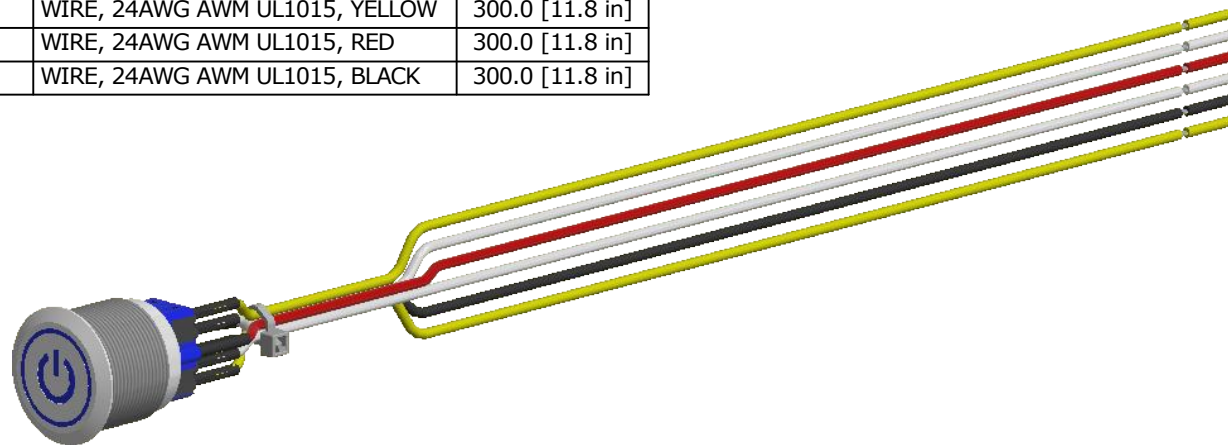
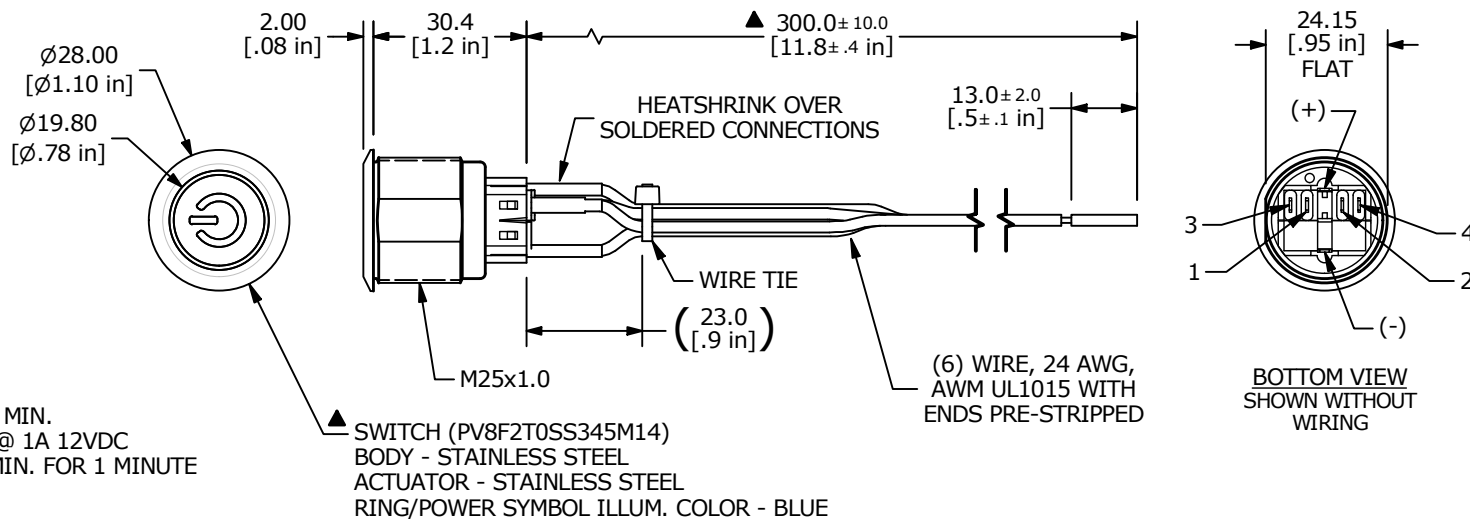


SWITCH	WIRE	LENGTH
SW1-1	WIRE, 24AWG AWM UL1015, WHITE	300.0 [11.8 in]
SW1-2	WIRE, 24AWG AWM UL1015, WHITE	300.0 [11.8 in]
SW1-3	WIRE, 24AWG AWM UL1015, YELLOW	300.0 [11.8 in]
SW1-4	WIRE, 24AWG AWM UL1015, YELLOW	300.0 [11.8 in]
SW1- (+)	WIRE, 24AWG AWM UL1015, RED	300.0 [11.8 in]
SW1- (-)	WIRE, 24AWG AWM UL1015, BLACK	300.0 [11.8 in]



RECOMMENDED PANEL CUTOUT
 MAX. PANEL THICKNESS 10.0 [.39 in]



- NOTES:**
- DIMENSIONS IN MM [INCH]
 - TERMINAL NUMBERS FOR REF. ONLY
 - CONTACT MATERIAL: SILVER
 - RATING: 2A 48VDC
 - LAMP VOLTAGE: 24V
 - INGRESS PROTECTION: IP65
 - TRAVEL: 2.8mm
 - ACTUATION FORCE: 6.5N
 - OPERATING TEMP.: -20°C to 55°C
 - INSULATION RESISTANCE: 1,000 MΩ MIN.
 - CONTACT RESISTANCE: 50mΩ MAX. @ 1A 12VDC
 - DIELECTRIC STRENGTH: 2,000 VAC MIN. FOR 1 MINUTE
 - ELECTRIC LIFE: 50,000 CYCLES.
 - ▲ DENOTES CRITICAL PARAMETER.
 - ▲ ALL MATERIAL SHALL BE ROHS COMPLIANT
 - SUPPLIED HARDWARE: O-RING AND HEXNUT
 - USE P/N'S DESIGNATED OR ENGINEERING APPROVED EQUIVALENTS

REV	ECO NO	DESCRIPTION	DATE	BY
A	ECO-100431	Release	10/14/21	MW



OBJECT ID
 100119730

TITLE PV8FWT0SS-345-M14				
SCALE 2:3	DATE 10/12/2021	DR MW	DWG 52-PV8FWT0SS345M14	REV A