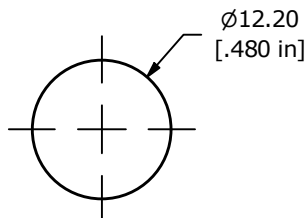
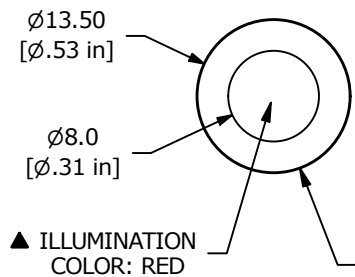
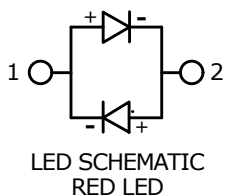


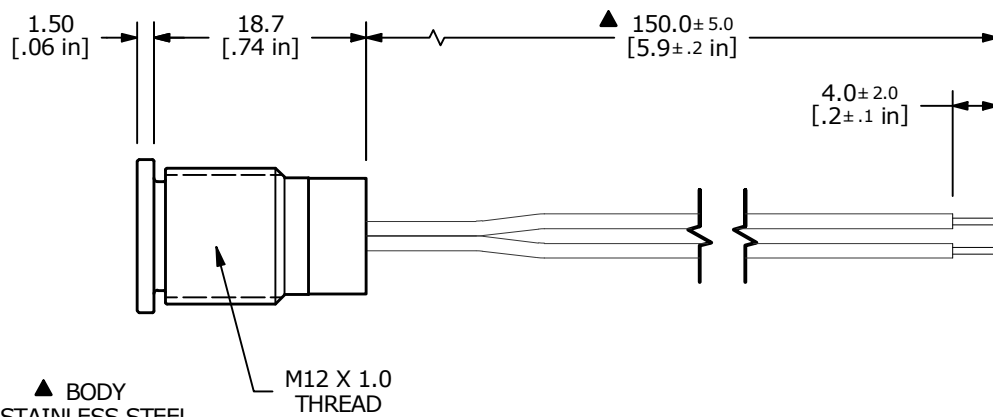
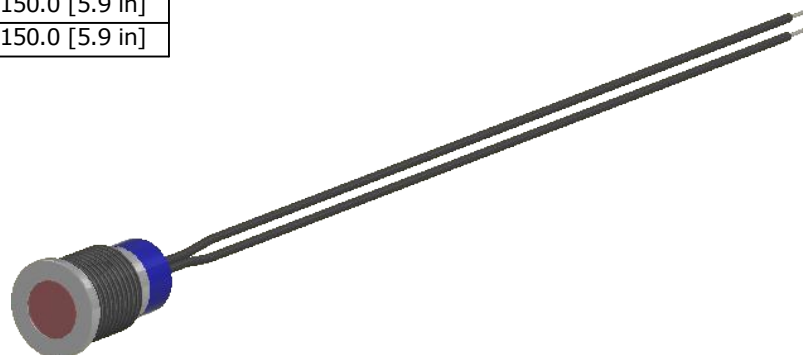
ADAPTER	WIRE	LENGTH
SW1-1	WIRE, 24 AWG AWM UL1007, BLACK	150.0 [5.9 in]
SW1-2	WIRE, 24 AWG AWM UL1007, BLACK	150.0 [5.9 in]



RECOMMENDED PANEL CUTOUT  
MAX. PANEL THICKNESS 6mm



▲ BODY  
STAINLESS STEEL



NOTE:

1. ALL DIMENSIONS IN MM [INCH]
2. GENERAL TOLERANCE: X.X = ±0.4  
X.XX = ±0.25
3. TERMINAL NUMBERS FOR REF ONLY
4. OPERATING TEMP: -25°C to 55°C
5. CURRENT RATING: 2mA-20mA
- ▲ 6. LAMP VOLTAGE: 6V
7. IP RATING: IP67
8. ▲ DENOTES CRITICAL PARAMETER.
- ▲ 9. HARDWARE SUPPLIED: O-RING AND HEXNUT



TITLE PVL12FWS13

A	24579	RELEASE	11/6/20	MW
REV	PCR NO	DESCRIPTION	DATE	BY

THE INFORMATION CONTAINED IN THIS DOCUMENT IS PROPRIETARY  
TO E-SWITCH AND IS NOT TO BE COPIED OR TRANSFERRED

SCALE 3:2	DATE 11/5/2020	DR MW	DWG 52-PVL12FWS13	REV A
--------------	-------------------	----------	----------------------	----------