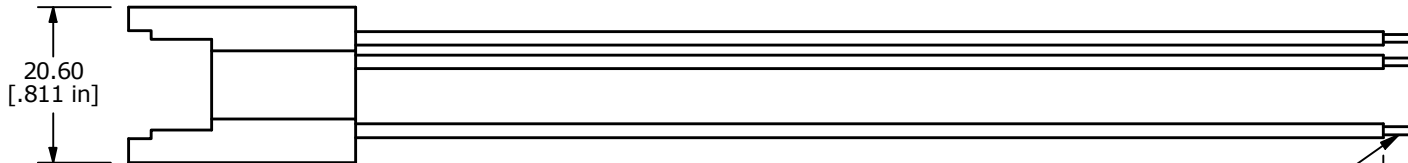
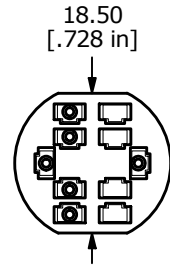
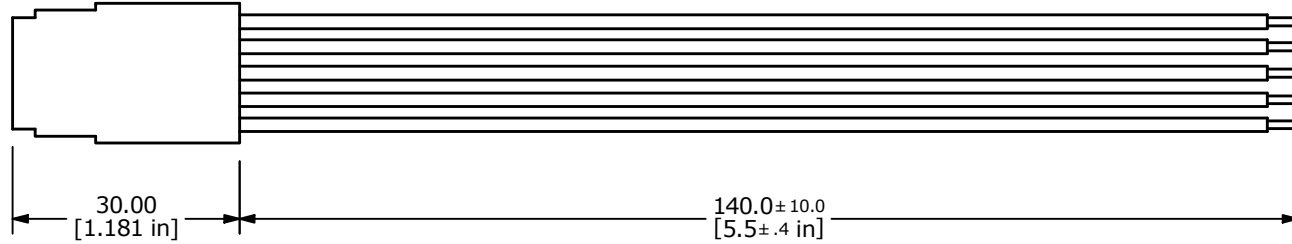
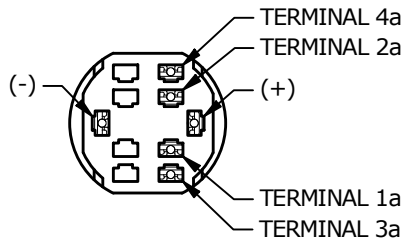
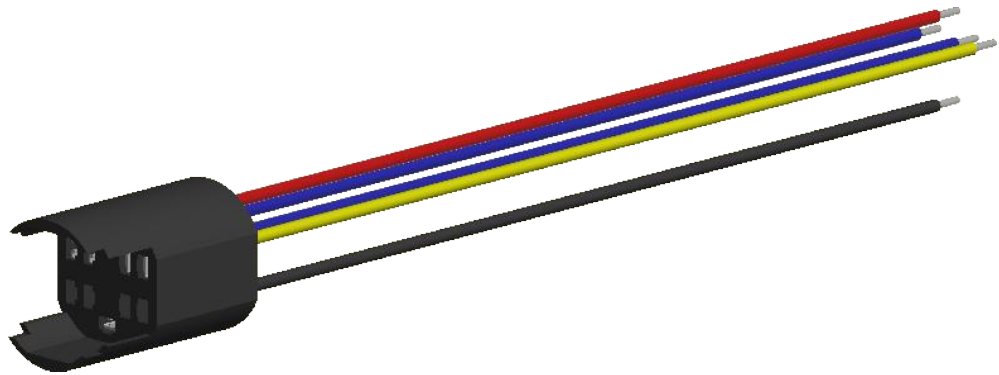



SWITCH	WIRE	LENGTH
SW1-1a	WIRE, 22 AWG AWM UL1007, BLUE	140.0 [5.5 in]
SW1-2a	WIRE, 22 AWG AWM UL1007, BLUE	140.0 [5.5 in]
SW1-3a	WIRE, 22 AWG AWM UL1007, YELLOW	140.0 [5.5 in]
SW1-4a	WIRE, 22 AWG AWM UL1007, YELLOW	140.0 [5.5 in]
SW1- (-)	WIRE, 22 AWG AWM UL1007, BLACK	140.0 [5.5 in]
SW1- (+)	WIRE, 22 AWG AWM UL1007, RED	140.0 [5.5 in]



WIRE LEADS FREE END
STRIPPED AND TINNED

4.0
[.2 in]

- NOTE:
1. ALL DIMENSIONS IN MM [INCH]
 2. GENERAL TOLERANCE: X.X = ± 0.4
X.XX = ± 0.25
 3. MATES WITH THE PV8, PV9, AND PV10 SERIES SPDT ILLUMINATED SWITCHES.

REV	ECO NO	DESCRIPTION	DATE	BY	 E-SWITCH®				OBJECT ID
C	ECO-101567	140.0+/-10.0 was 140.0 +/-5.0	01/30/23	JS	TITLE PVP8WS3				000003313
					SCALE 1:1	DATE 3/28/2019	DR MJR	DWG 52-PVP8WS3	REV C

THE INFORMATION CONTAINED IN THIS DOCUMENT IS PROPRIETARY TO E-SWITCH AND IS NOT TO BE COPIED OR TRANSFERRED