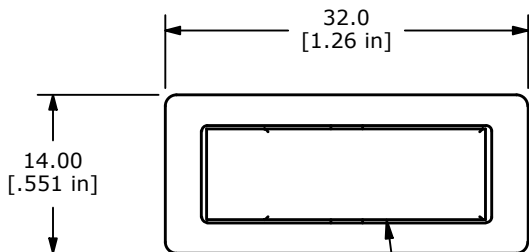


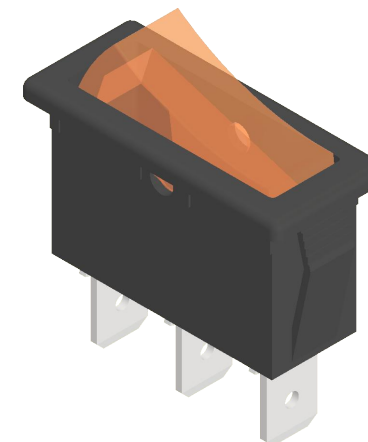
PANEL CUTOUT

PANEL THICKNESS	(x)
0.75 - 1.25	30.0
1.25 - 2.00	30.4
2.00 - 3.00	30.7

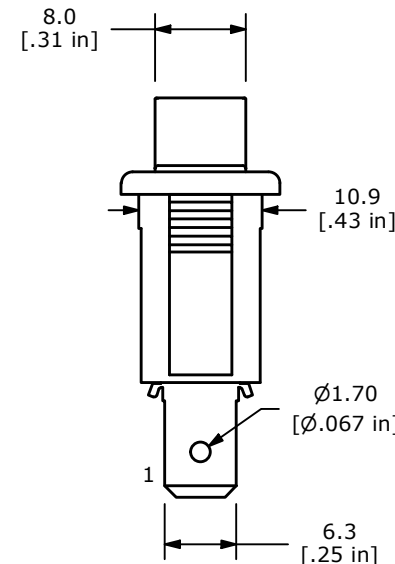
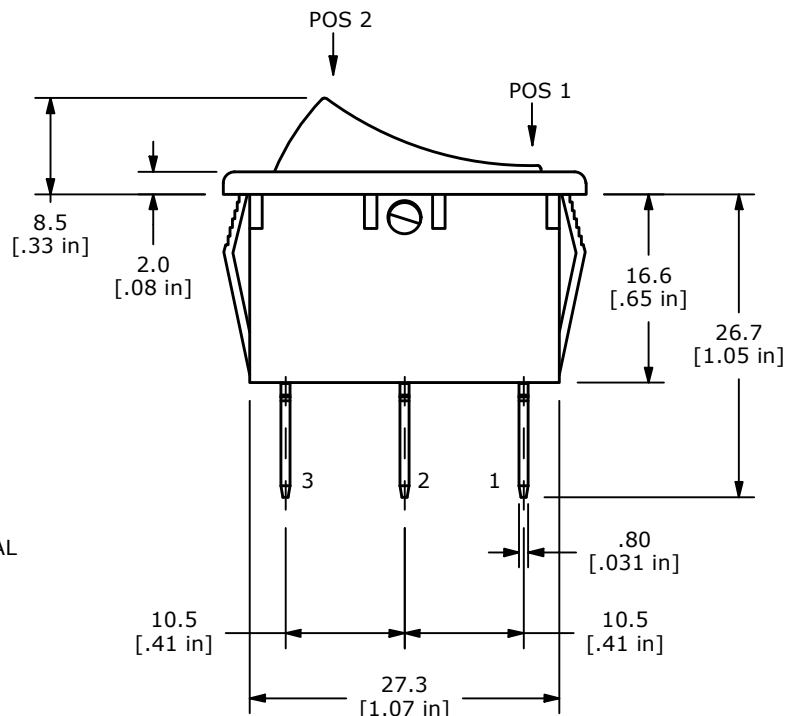
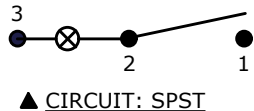


▲ BODY COLOR: BLACK

▲ ACTUATOR COLOR: TRANSPARENT AMBER



SWITCH FUNCTION	
POS. 2	POS. 1
ON	OFF
2-1	NONE



NOTE:

1. DIMENSIONS IN MM [INCH]
2. GENERAL TOLERANCE: X.X = ± 0.4  
X.XX = ± 0.25
3. TERMINAL NUMBERS FOR REF ONLY
- ▲ 4. CONTACT MATERIAL: SILVER
- ▲ 5. CONTACT RATINGS:  
ANSI/UL 61058-1  
20A @ 125VAC T105 [cURus]  
3/4HP T105 [cURus]
6. CONTACT RESISTANCE: 35mΩ MAX. @ 50VAC INITIAL
7. INSULATION RESISTANCE: 100MΩ MIN. @ 500VDC
8. DIELECTRIC STRENGTH: 1,500VAC FOR 1 MINUTE
9. ELECTRICAL LIFE: 10,000 CYCLES [cURus]
10. OPERATING TEMPERATURE: -20°C to 105°C
- ▲ 11. ILLUMINATION VOLTAGE: 12V
12. ▲ DENOTES CRITICAL PARAMETER

REV	ECO NO	DESCRIPTION	DATE	BY
E	ECO-102885	NOTE 5 20A WAS 15A, NOTE 10 105C WAS 85	07/30/24	JS



OBJECT ID  
000001457

TITLE RB141C1000-124				
SCALE 3:2	DATE 5/3/2011	DR CAB	DWG 38-RB141C1000124	REV E