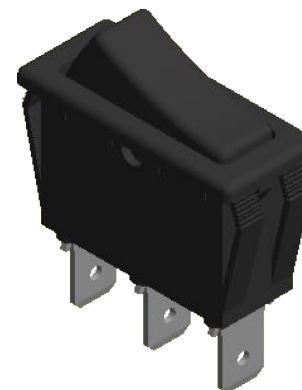
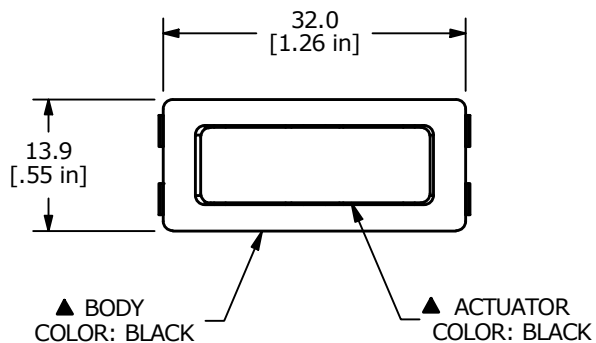
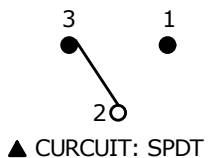


PANEL CUTOUT

PANEL THICKNESS	(x)
0.75 - 1.25	30.0
1.25 - 2.00	30.4
2.00 - 3.00	30.7

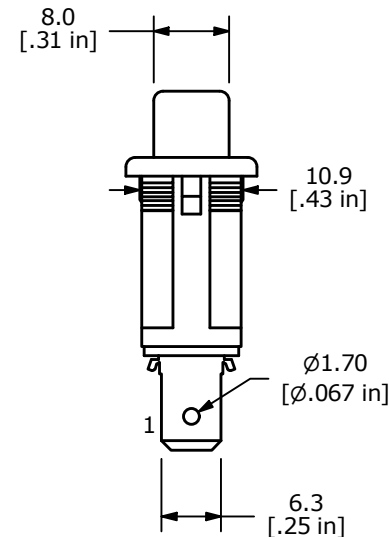
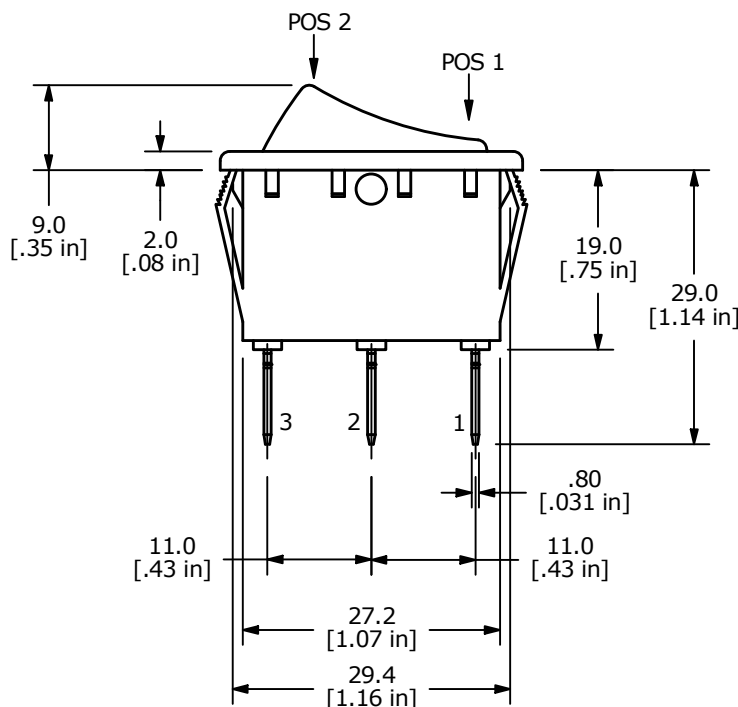


SWITCH FUNCTION	
POS. 1	POS. 2
ON	ON
3-2	2-1



NOTE:

1. DIMENSIONS IN MM [INCH]
2. GENERAL TOLERANCE: X.X = ± 0.4
X.XX = ± 0.25
3. TERMINAL NUMBERS FOR REF ONLY
4. CONTACT MATERIAL: SILVER
- ▲ 5. CONTACT RATINGS:
ANSI/UL 1054
16A @ 125/250VAC [cURus]
20A @ 125VAC [cURus]
3/4HP 125/250VAC [cURus]
6. CONTACT RESISTANCE: 20mΩ MAX. @ 50VAC INITIAL
7. INSULATION RESISTANCE: 100MΩ MIN. @ 500VDC
8. DIELECTRIC STRENGTH: 1,000VAC FOR 1 MINUTE
9. ELECTRICAL LIFE: 6,000 CYCLES [cURus]
10. OPERATING TEMPERATURE: 0°C to 65°C [cURus]
- ▲ 11. ILLUMINATION VOLTAGE: NON-ILLUMINATED
12. ▲ DENOTES CRITICAL PARAMETER



REV	ECO NO	DESCRIPTION	DATE	BY
C	ECO-101201	UPDATE PRINT	12/19/22	JS



OBJECT ID
00000287

TITLE RB143D1100				
SCALE 1:1	DATE 9/6/2005	DR CAB	DWG 14-RB143D1100	REV C