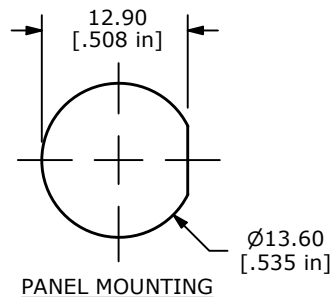


▲ **CIRCUIT: SPST**  
OFF-(ON)  
MOMENTARY



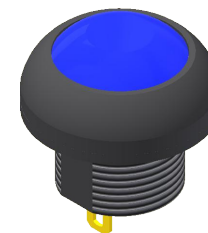
## NOTE:

1. ALL DIMENSIONS IN MM [INCH]
2. GENERAL TOLERANCE: X.X =  $\pm 0.4$   
X.XX =  $\pm 0.25$
3. TERMINAL NUMBERS FOR REF ONLY
4. CONTACT MATERIAL: GOLD OVER SILVER
5. RATING: 125mA @ 125 VAC  
100mA @ 50 VDC
6. ELECTRIC LIFE: 500,000 CYCLES AT FULL LOAD
7. CONTACT RESISTANCE: 50 m $\Omega$  max. (INITIAL)
8. INSULATION RESISTANCE: 1,000 M $\Omega$  min. @ 500VDC
9. DIELECTRIC STRENGTH: 1,000 VAC rms.
10. OPERATING FORCE: 2N~5N
11. OPERATING TEMPERATURE: -30°C to +85°C
12. CONTACT BOUNCE: 10ms MAX.
13. TRAVEL: 1.5mm  $\pm 0.25$ mm
14. PANEL THICKNESS RANGE: 1.5 - 4.0mm
15. ▲ DENOTES CRITICAL PARAMETER.
16. MAX MOUNTING TORQUE: 0.5 Nm APPLIED TO THE NUT
- ▲ 17. HARDWARE INCLUDED: T081101 LOCK WASHER (QTY 1)  
T081102 HEX NUT (QTY 1)  
T081100 RUBBER SEAL (QTY 1)
18. SEAL RATING: IP67 AT THE FRONT PANEL

Ø17.50  
[.689 in]

Ø12.00  
[.472 in]

▲ HOUSING COLOR:  
BLACK



▲ CAP COLOR:  
BLUE

M12 x 0.75  
THREAD

1.0 [.04 in] THICK  
RUBBER SEAL

▲ 12.90  
[.508 in]

2.80  
[.110 in]

1.20  
[.047 in]

2.00  
[.079 in]

2.0  
[.08 in]

5.00  
[.197 in]

EPOXY  
SEAL

3.50  
[.138 in]

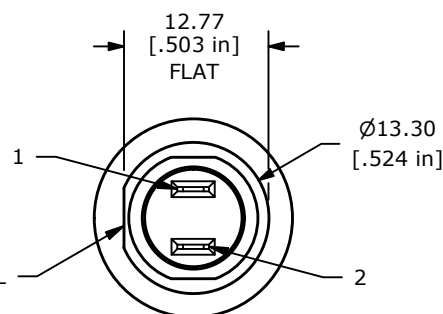
.40  
[.016 in]

5.08  
[.200 in]

12.77  
[.503 in]  
FLAT

Ø13.30  
[.524 in]

ORIENTATION  
FLAT FOR PANEL  
MOUNTING



REV	ECO NO	DESCRIPTION	DATE	BY	E-SWITCH®				OBJECT ID
H	ECO-103492	REMOVED SIDE RETENTION SLOTS	07/14/25	MR	TITLE RP8100B2M1CEBLKBLUNIL				000022750
					SCALE	DATE	DR	DWG	REV
					3:2	12/13/2007	RC	ST081001	H

THE INFORMATION CONTAINED IN THIS DOCUMENT IS PROPRIETARY TO  
E-SWITCH AND IS NOT TO BE COPIED OR TRANSFERRED