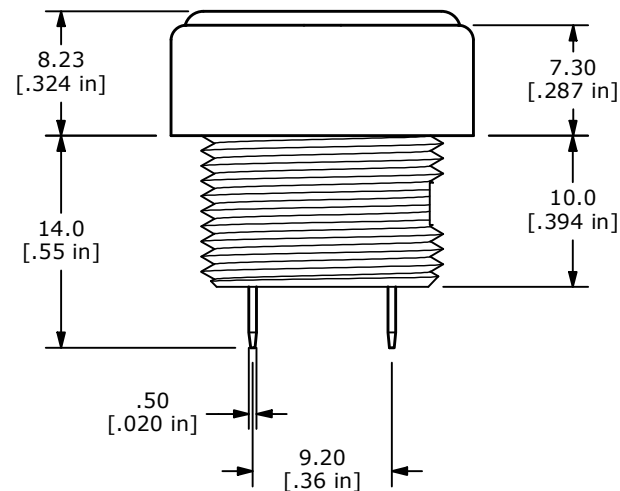
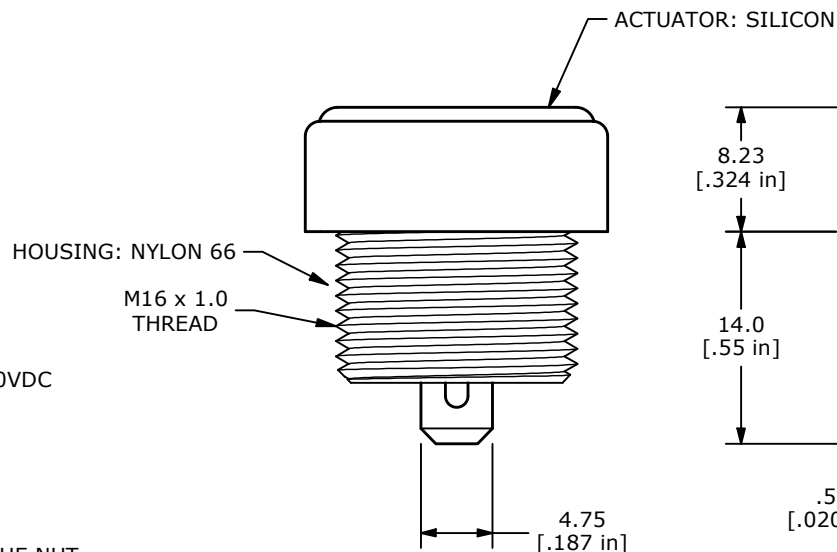
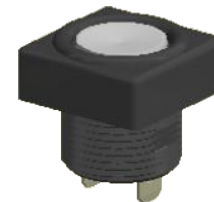
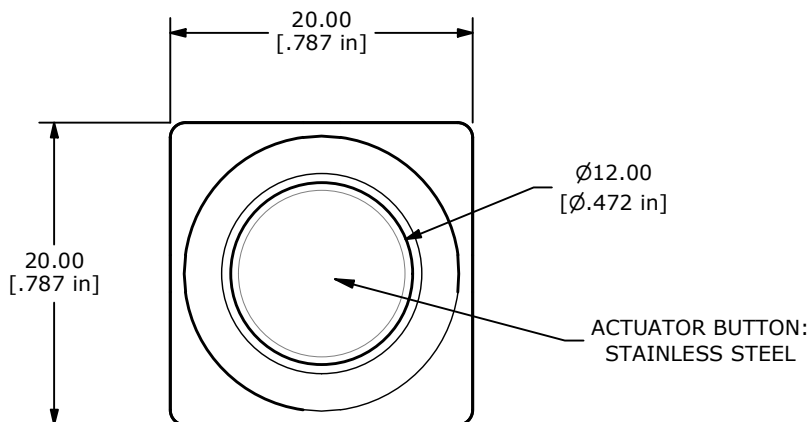


▲ CIRCUIT: SPST
(MOMENTARY)

NOTE:

1. ALL DIMENSIONS IN MM [INCH]
2. GENERAL TOLERANCE: X.X = ± 0.4
X.XX = ± 0.25
3. TERMINAL NUMBERS FOR REF ONLY
4. CIRCUIT: SPST OFF (MOMENTARY) - ON
5. CONTACT MATERIAL: GOLD
6. RATING: 0.4VA MAX. @ 20 VAC or VDC
7. ELECTRIC LIFE: 50,000 CYCLES AT FULL LOAD
8. CONTACT RESISTANCE: 200 milli-OHM max. (INITIAL)
9. INSULATION RESISTANCE: 100 MEGA-OHM min. @ 500VDC
10. DIELECTRIC STRENGTH: 1000 VAC rms.
- ▲ 11. OPERATING FORCE: 450gf ± 130 gf
12. OPERATING TEMPERATURE: -30°C to +85°C
13. TRAVEL: 0.65 ± 0.2 mm
14. PANEL THICKNESS RANGE: 1.5 - 5.0mm.
15. ▲ DENOTES CRITICAL PARAMETER.
16. MAX MOUNTING TORQUE: 2.2 Nm MAX. APPLIED TO THE NUT
- ▲ 17. HARDWARE INCLUDED (SHIPPED BULK):
T086100: O-RING, QTY 1
T086102: HEX NUT, QTY 1
18. SEAL PROTECTION: IP67 RATED



REV	ECO NO	DESCRIPTION	DATE	BY	E-SWITCH®				OBJECT ID
F	ECO-101793	HOUSING UPDATE	03/30/23	MW	TITLE RP8600B2M1CEBLKSIL				000022834
					SCALE	DATE	DR	DWG	REV
					2:1	9/29/2014	RC	ST086000	F

THE INFORMATION CONTAINED IN THIS DOCUMENT IS PROPRIETARY TO E-SWITCH AND IS NOT TO BE COPIED OR TRANSFERRED