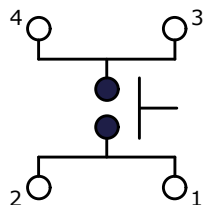
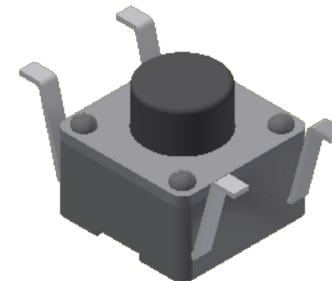
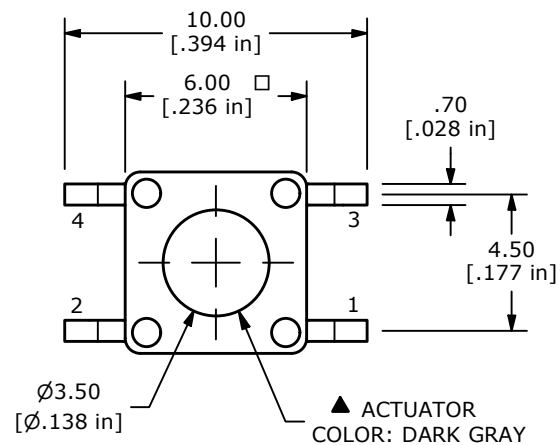


RECOMMENDED P.C.B. LAYOUT

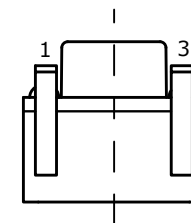
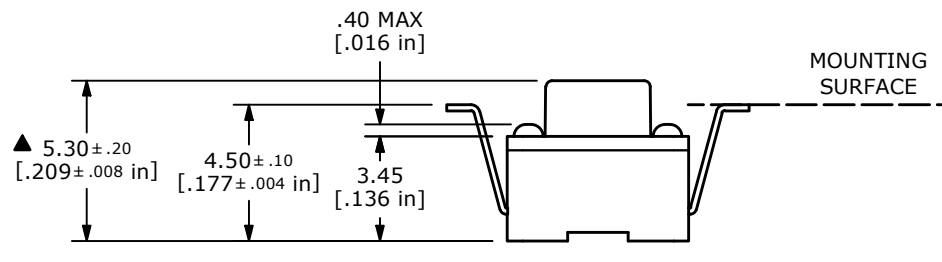


▲ CIRCUIT: SPST



NOTES:

1. ALL DIMENSIONS IN MM [INCH]
2. GENERAL TOLERANCE: X.X = ± 0.4
X.XX = ± 0.25
3. TERMINAL NUMBERS FOR REF. ONLY
4. RATING: 50mA @ 12VDC
- ▲ 5. OPERATING FORCE: 260 ± 50gf
6. TRAVEL: 0.25 +0.2/-0.1mm
7. CONTACT RESISTANCE: 100mΩ MAX.
8. CONTACT MATERIAL: SILVER PLATING
9. DIELECTRIC STRENGTH: 250VAC FOR 1 MINUTE.
10. INSULATION RESISTANCE: 100MΩ MIN. @100VDC
11. ELECTRICAL LIFE: 100,000 CYCLES
12. ▲ DENOTES CRITICAL PARAMETER
13. OPERATING TEMP: -40°C to +85°C
14. PACKAGING: TAPE and REEL, 1,000 PCS / REEL
- ▲ 15. RIGHT AND LEFT VARIATION TO BE WITHIN 0.1mm AFTER TERMINAL BENDING



REV	ECO NO	DESCRIPTION	DATE	BY
D	ECO-102383	RMEOVE 3.45 AND 1.45 DIMENSIONS	12/01/23	JS



OBJECT ID
100122907

TITLE RT3301AF260Q				
SCALE 4:1	DATE 10/19/2022	DR JS	DWG P011400	REV D