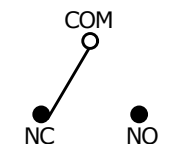


P.C. MOUNTING

O.P. (MM)	P.T. (MM)
8.8 ± 0.8	1.6 MAX.

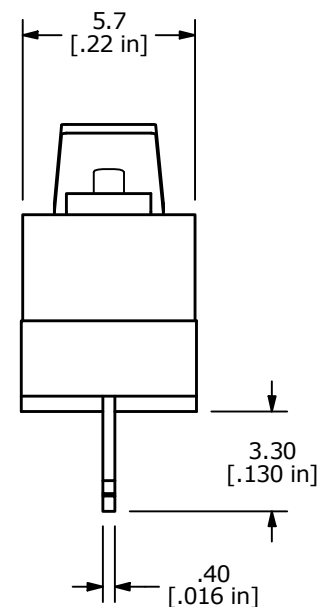
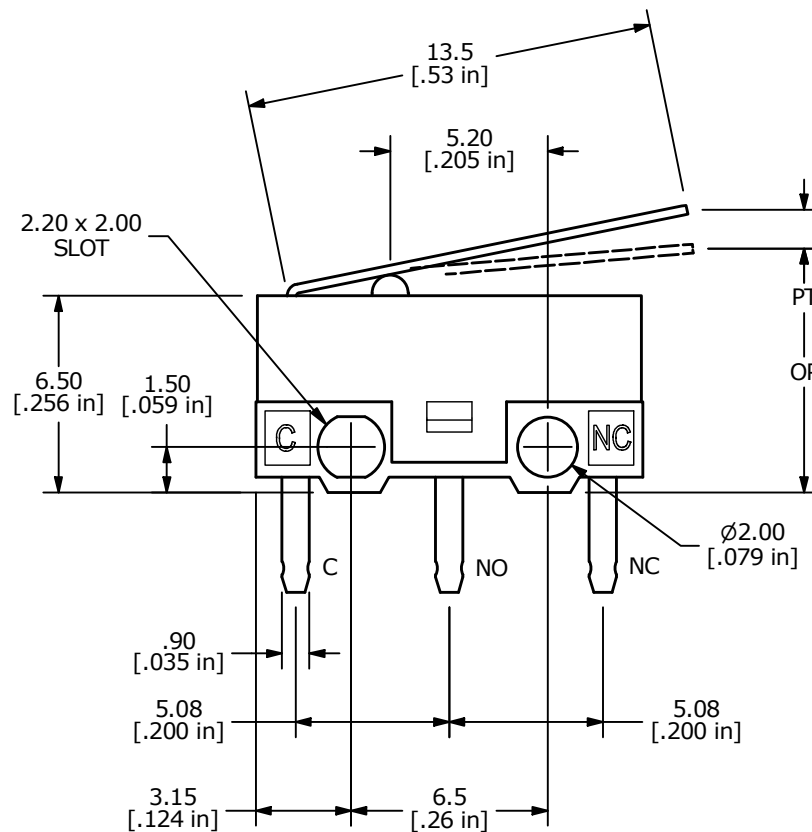
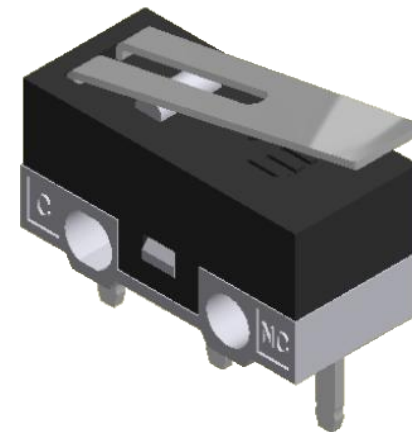
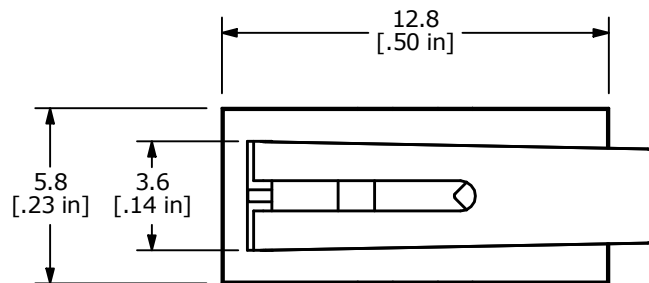
O.P. = OPERATING POINT
P.T. = PRE-TRAVEL



CIRCUIT: SPDT

NOTES:

1. ALL DIMENSIONS IN MM [INCH]
2. GENERAL TOLERANCE: X.X = ± 0.4
X.XX = ± 0.25
- ▲ 3. RATING: 3A @125VAC
1.5A @250VAC UL
4. OPERATING FORCE: 40 ± 15 GRAMS
5. OPERATING TEMP: -25°C to 75°C
6. ELECTRICAL LIFE: 10,000 CYCLES MIN.
7. MECHANICAL LIFE: 1,000,000 CYCLES
8. INSULATION RESISTANCE: 100 MEGA-OHMS MIN.
9. DIELECTRIC STRENGTH: 500VAC - 1 MINUTE
10. ▲ DENOTES CRITICAL PARAMETER.
11. PACKAGED IN TRAYS, 120 PIECES PER TRAY.



REV	ECO NO	DESCRIPTION	DATE	BY
D	ECO-102005	PRINT UPDATE	06/16/23	JS



OBJECT ID
000021319

TITLE SS0750301F040P1A				
SCALE 4:1	DATE 6/24/2008	DR BLR	DWG Q971003	REV D