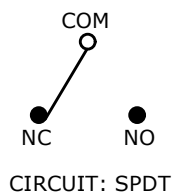


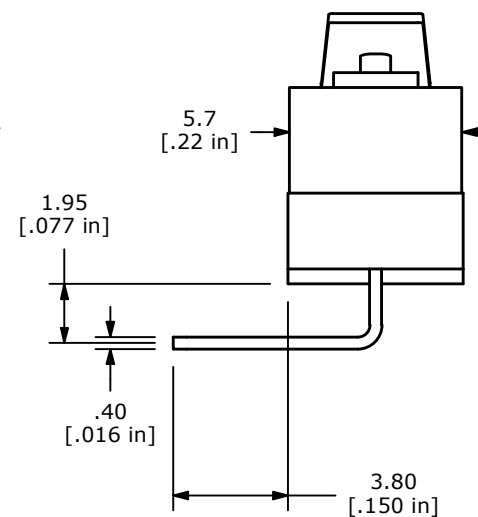
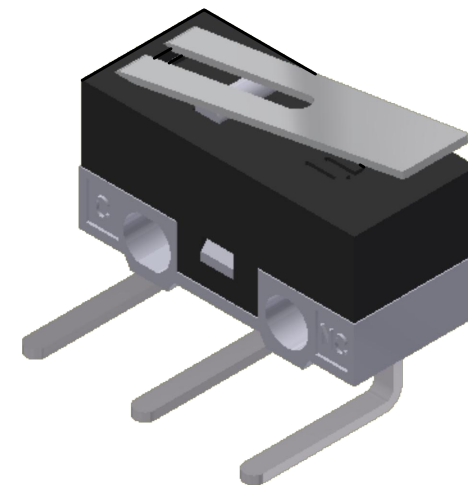
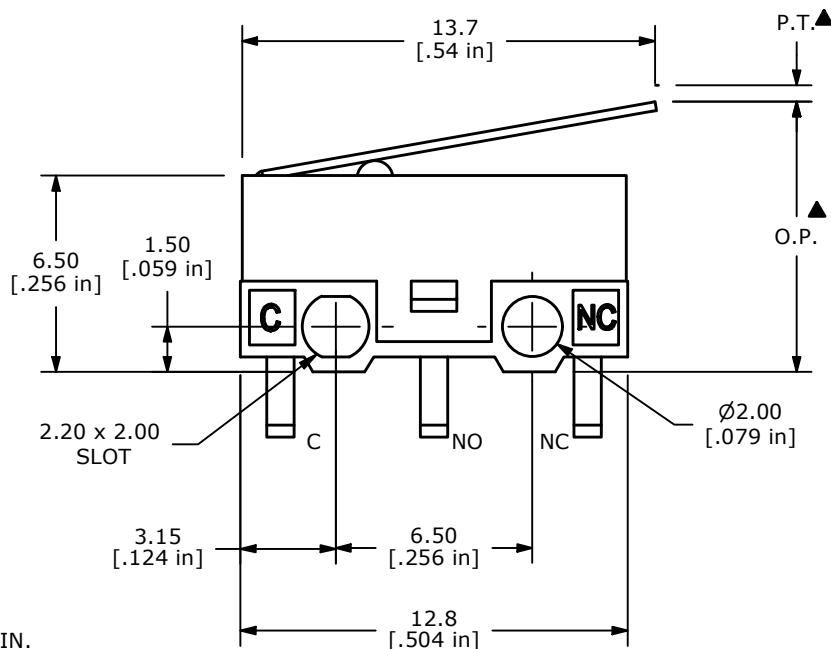
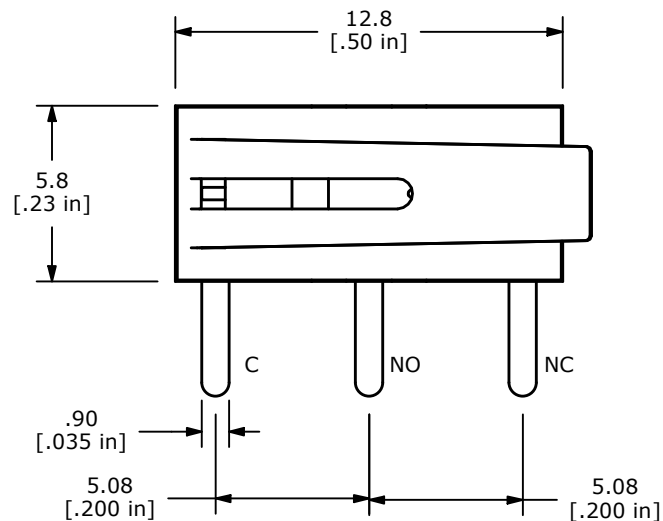
O.P. (MM)	P.T. (MM)
8.8 ±0.8	1.60 MAX.

O.P. = OPERATING POINT  
P.T. = PRE-TRAVEL



NOTES:

1. ALL DIMENSIONS IN MM [INCH]
2. GENERAL TOLERANCE: X.X=±0.4  
X.XX=±0.25
- ▲3. RATING: 0.4A MAX.@ 20VDC MAX.
4. CONTACT RESISTANCE: 100 Milli-Ohms Max.
- ▲5. OPERATING FORCE: 20 ± 10 gf
6. OPERATING TEMP: -25°C TO 75°C
7. ELECTRICAL LIFE: 10,000 CYCLES MIN.
8. MECHANICAL LIFE: 1,000,000 CYCLES MIN.
9. INSULATION RESISTANCE: 100 MEGA-OHMS MIN.
10. DIELECTRIC STRENGTH: 1,500VAC - 1 MINUTE
11. ▲DENOTES CRITICAL PARAMETER.
12. PACKAGING: PARTS PER TRAY.



REV	ECO NO	DESCRIPTION	DATE	BY
A	ECO-102339	RELEASE	11/02/23	JS



OBJECT ID  
100126130

TITLE SS075R101F020V1A				
SCALE	DATE	DR	DWG	REV
3:1	10/31/2023	JS	Q971047	A