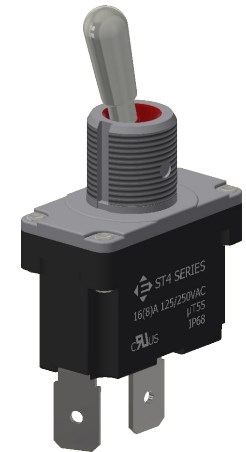
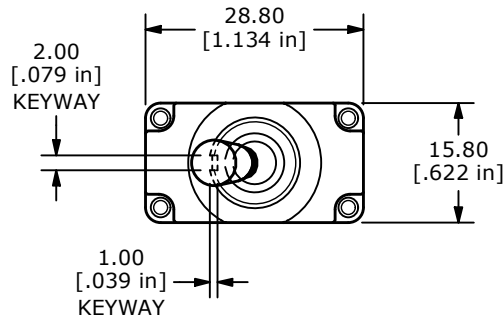
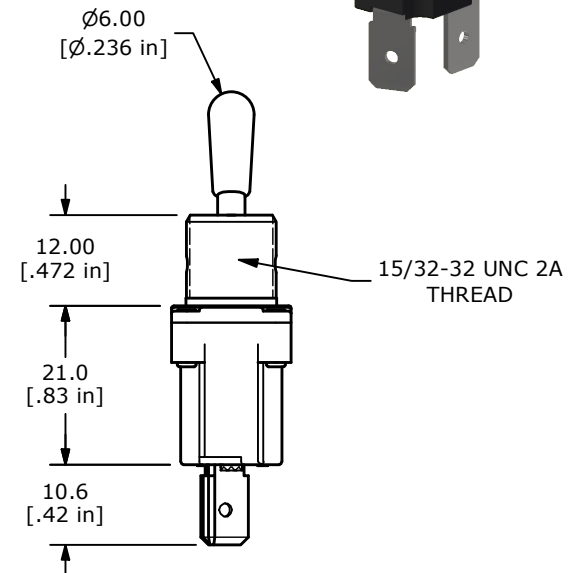
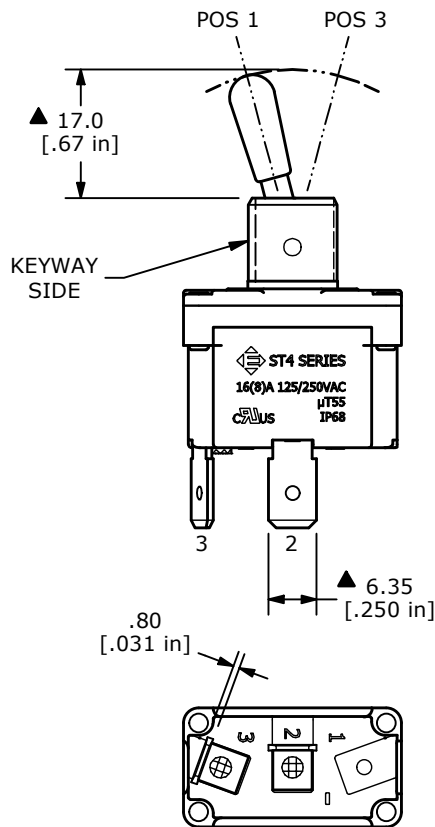


RECOMMENDED PANEL CUTOUTS



SWITCH FUNCTION		
POS. 1	POS. 2	POS. 3
OFF	N/A	(ON)
OPEN	N/A	2-3

(ON)=MOMENTARY



NOTES:

1. ALL DIMENSIONS IN MM [INCH]
2. GENERAL TOLERANCE: X.X = ±0.4
X.XX = ±0.25
3. TERM. NUMBERS FOR REF. ONLY
- ▲ 4. RATING: 16(8)A 125/250VAC μT55
5. ELECTRICAL LIFE: 10,000 CYCLES
6. CONTACT RESISTANCE: <20 MILLI-OHMS INITIAL
7. DIELECTRIC STRENGTH: >1,500V AC 1MIN
8. INSULATION RESISTANCE: >100M OHMS
9. OPERATING TEMP: -10°C to 55°C
10. INGRESS PROTECTION: IP68
11. ▲ DENOTES CRITICAL PARAMETER.
- ▲ 12. SUPPLIED HARDWARE: LOCK WASHER, 2 HEXNUTS and KEYLOCK WASHER

REV	ECO NO	DESCRIPTION	DATE	BY
A	ECO-102952	Release	08/28/24	MW



OBJECT ID
100128286

TITLE ST4SP1AT1C2				
SCALE 1:1	DATE 8/22/2024	DR MW	DWG 14-ST4SP1AT1C2	REV A