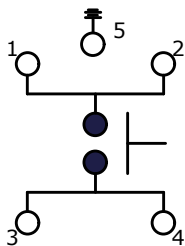


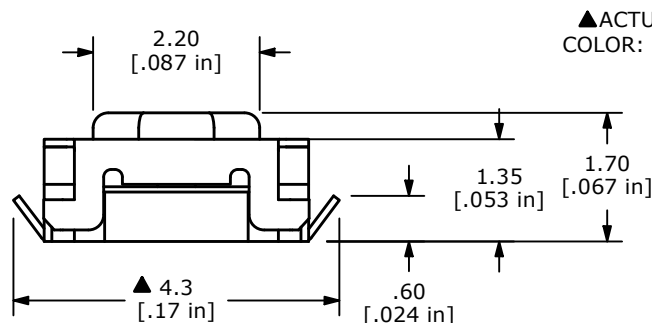
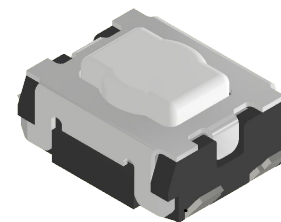
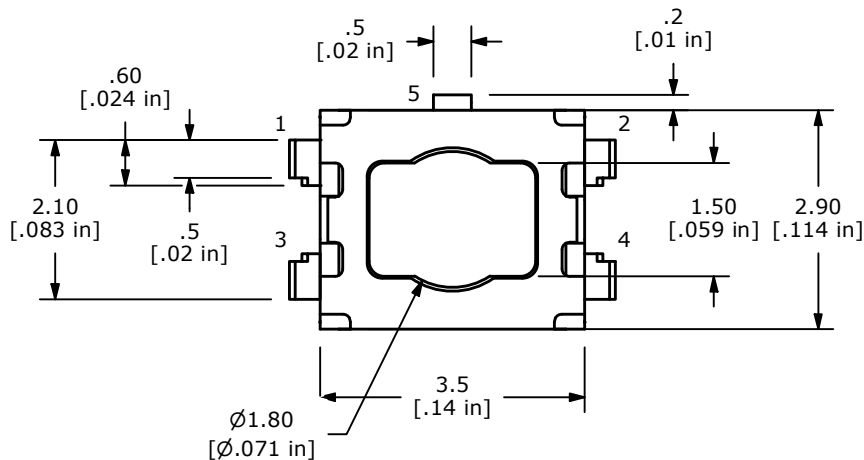
RECOMMENDED PCB LAYOUT



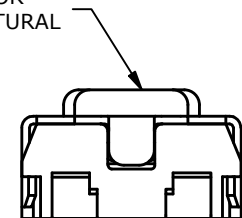
▲ CIRCUIT: SPST

NOTES:

1. ALL DIMENSIONS IN MM [INCH]
2. GENERAL TOLERANCE: X.X=±0.4  
X.XX=±0.25
3. TERMINAL NUMBERS FOR REF. ONLY
4. CONTACT RATING: 50mA @ 12VDC
- ▲ 5. OPERATING FORCE: 200±50gf
6. DIELECTRIC STRENGTH: 250VAC FOR 1 MINUTE.
7. TRAVEL: 0.15±0.1mm
8. CONTACT RESISTANCE: 100mΩ MAX. (INITIAL)
9. INSULATION RESISTANCE: 100MΩ MIN. @500VDC
10. MECHANICAL/ELECTRICAL LIFE: 200,000 CYCLES
- ▲ 11. CONTACT MATERIAL: SILVER
12. ▲ DENOTES CRITICAL PARAMETER
13. OPERATING TEMP: -40°C TO 85°C
14. STORAGE TEMP: -40°C TO 85°C
15. PACKAGING: TAPE AND REEL, 4,000 PCS/REEL



▲ACTUATOR  
COLOR: NATURAL



REV	ECO NO	DESCRIPTION	DATE	BY
B	ECO-102729	CORRECT PCB LAYOUT	05/10/24	JS
A	ECO-102514	RELEASE	03/12/24	JS



OBJECT ID  
100126929

TITLE TL1030AF200BQJ				
SCALE 8:1	DATE 2/27/2024	DR JS	DWG P640005	REV B