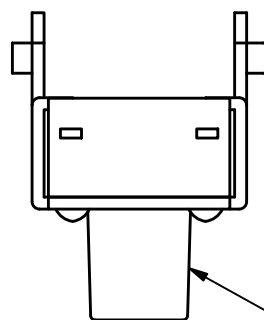


PC MOUNTING

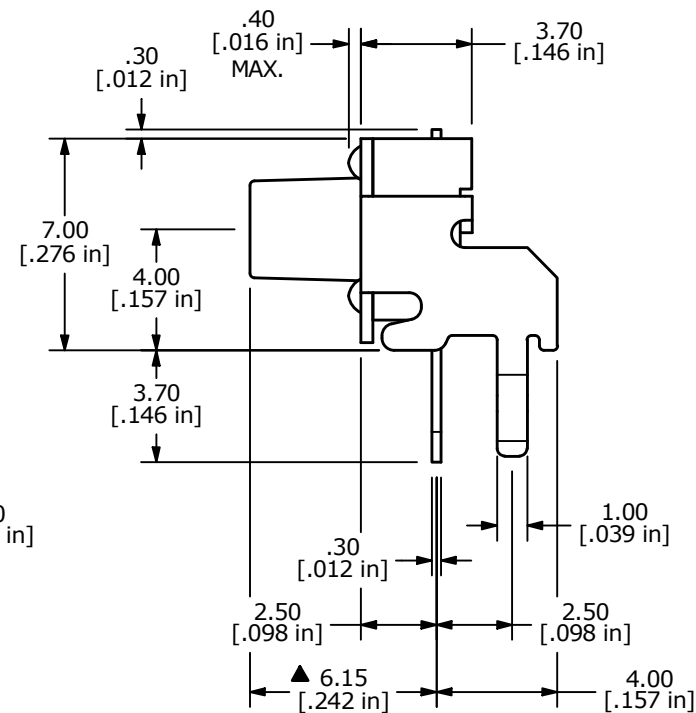
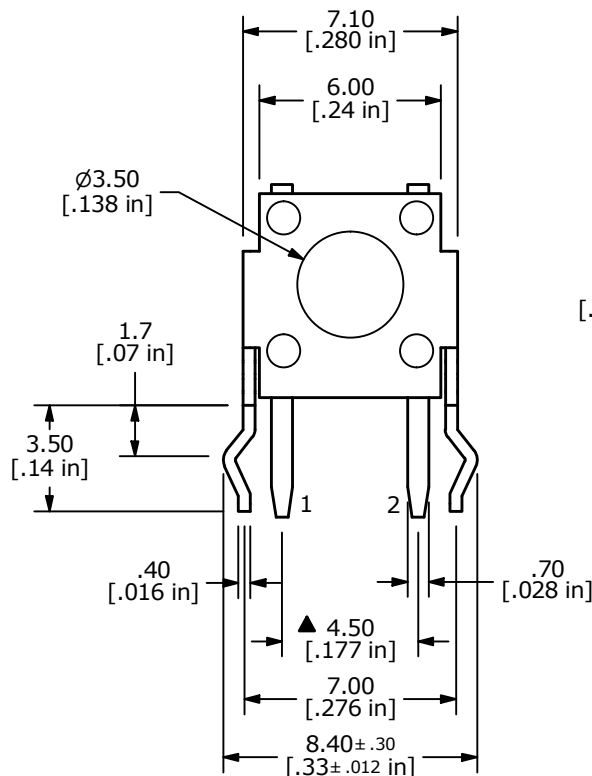
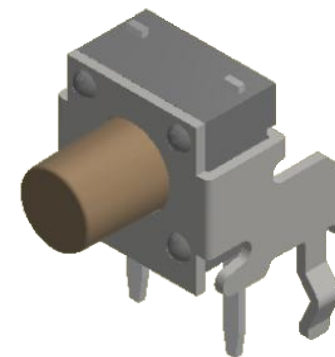


▲ CIRCUIT: SPST

- NOTES:
1. ALL DIMENSIONS IN MM
  2. GENERAL TOLERANCE: X.X = ±0.4  
X.XX = ±0.25
  3. TERM. NOS. FOR REFERENCE ONLY.
  4. RATING: 12VDC, 50mA
  - ▲ 5. OPERATING FORCE: 100 ±50 gf
  6. TRAVEL: 0.25 +0.2/-0.1 mm
  7. CONTACT RESISTANCE: 50 MILLI OHMS MAX. (INITIAL)
  8. MECHANICAL/ELECTRICAL LIFE 100,000 CYCLES MIN.
  - ▲ 9. CONTACT MATERIAL: SILVER
  10. ▲ DENOTES CRITICAL PARAMETER
  11. OPERATING TEMP: -40°C TO 85°C



▲ ACTUATOR COLOR: BROWN



E	24741	add 7.00mm and .30mm dimensions	2/10/21	MW
D	24551	REMOVE STEP IN HOUSING, CHANGE TEMP	10/29/20	JM
C	19502	CHANGED TOLERANCE	12/08/10	BGL
B	19018	REDRAWN AND RELEASED	4/15/10	BLR
A	12370	RELEASED	12/10/02	CJB
REV	PCR NO	DESCRIPTION	DATE	BY



TITLE TL1105RF100Q

SCALE	DATE	DR	DWG	REV
4:1	4/15/2010	BLR	P021224	E

THE INFORMATION CONTAINED IN THIS DOCUMENT IS PROPRIETARY TO E-SWITCH AND IS NOT TO BE COPIED OR TRANSFERRED