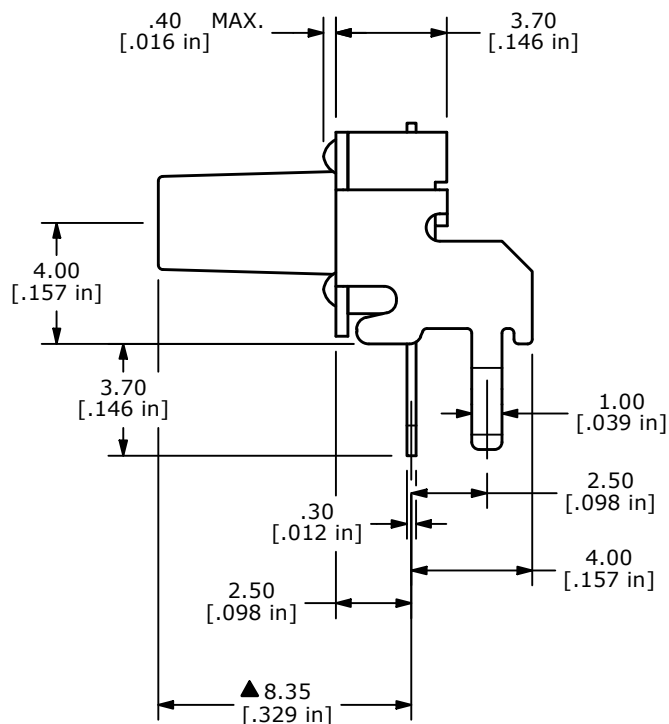
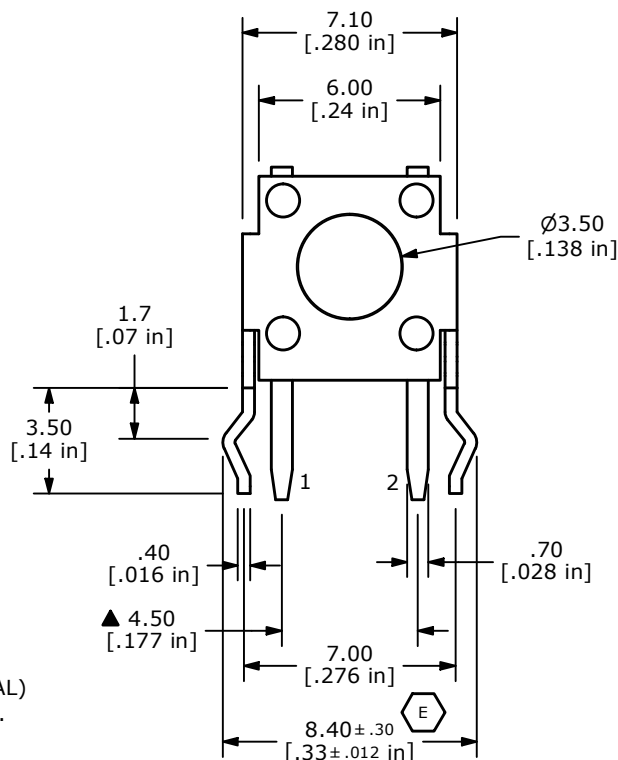
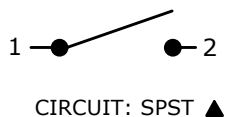
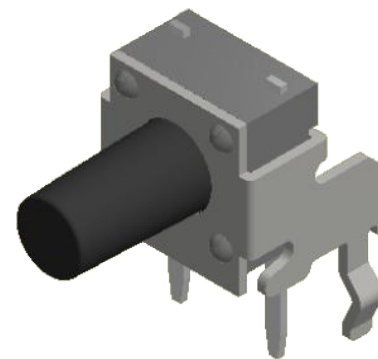


▲ ACTUATOR  
COLOR: BLACK



NOTES:

1. ALL DIMENSIONS IN MM
2. GENERAL TOLERANCE: X.X = ±0.4  
X.XX = ±0.25
3. TERM. NOS. FOR REFERENCE ONLY.
4. RATING: 12VDC, 50mA
- ▲ 5. OPERATING FORCE: 160 ± 50 gf
6. TRAVEL: 0.25 +0.2/-0.1 mm
7. CONTACT RESISTANCE: 50 MILLI OHMS MAX. (INITIAL)
8. MECHANICAL/ELECTRICAL LIFE 100,000 CYCLES MIN.
- ▲ 9. CONTACT MATERIAL: SILVER
10. ▲ DENOTES CRITICAL PARAMETER
11. OPERATING TEMP: -40°C TO 85°C

F	24548	REMOVE STEP IN HOUSING, CHANGE TEMP	10/6/20	JM
E	18313	LEG TOLERANCE WAS +/- 0.1	11/11/08	BLR
D	12370	REVISED AND REDRAWN	8/14/02	CJB
REV	PCR NO	DESCRIPTION	DATE	BY



TITLE TL1105SF160Q				
SCALE	DATE	DR	DWG	REV
4:1	11/11/2008	BLR	P010299	F

THE INFORMATION CONTAINED IN THIS DOCUMENT IS PROPRIETARY TO E-SWITCH AND IS NOT TO BE COPIED OR TRANSFERRED