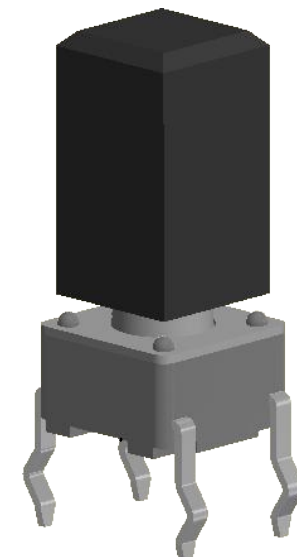


▲ BLACK CAP
(1SBLK CAP
Q800310)



- NOTES:
1. ALL DIMENSIONS IN MM [INCH]
 2. TOLERANCE: X.X = ± 0.4
X.XX = ± 0.25
 3. TERMINAL NUMBERS FOR REF. ONLY
 4. RATING: 12VDC @ 50mA
 5. TRAVEL: 0.25 +0.2/-0.1
 6. OPERATING FORCE: 160 ± 50gf
 7. ELECTRICAL LIFE: 100,000 LIFE CYCLES
 8. CONTACT RESISTANCE: 100mΩ MAX.
 - ▲ 9. CONTACT MATERIAL: SILVER
 10. ▲ DENOTES CRITICAL PARAMETER
 11. OPERATING TEMP: -40°C to 85°C

REV	ECO NO	DESCRIPTION	DATE	BY
A	ECO-100821	RELEASE	03/17/22	JS



OBJECT ID
100121512

TITLE TL1105SPF160Q1SBLK				
SCALE 4:1	DATE 3/10/2022	DR JS	DWG XP0221P	REV A