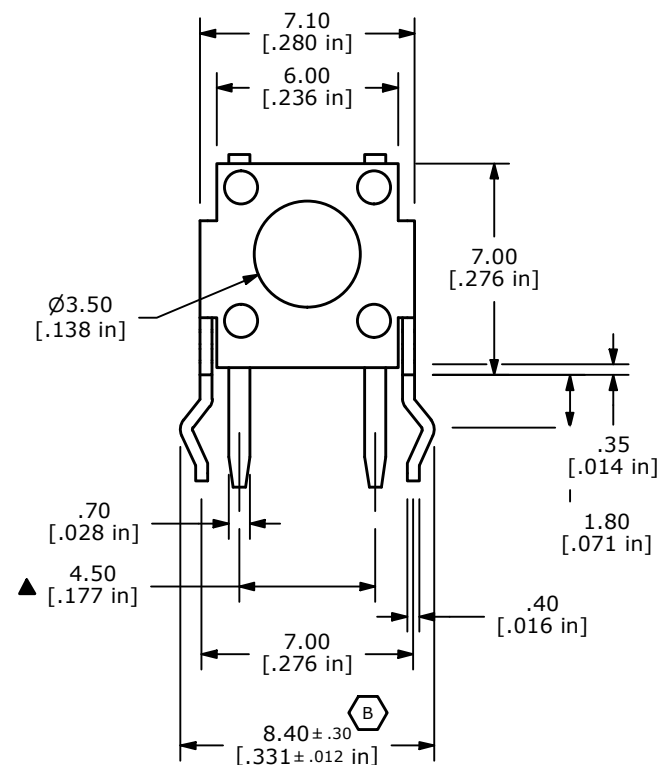
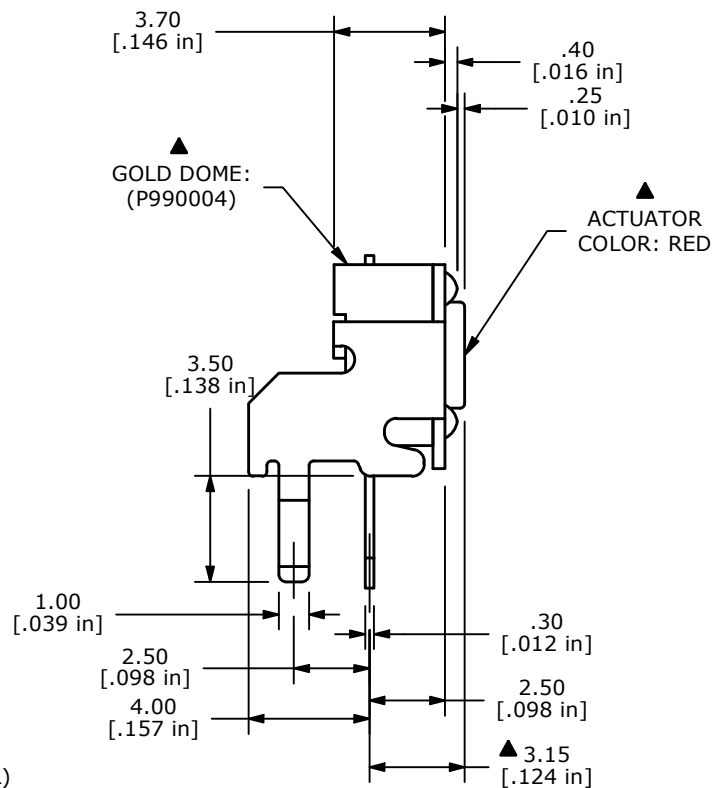
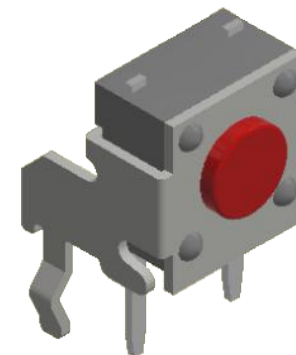
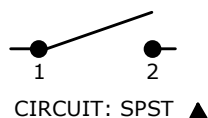


P.C.B. LAYOUT



NOTES:

1. ALL DIMENSIONS IN MM
2. GENERAL TOLERANCE: X.X=±0.4
X.XX=±0.25
3. TERM. NOS. FOR REFERENCE ONLY.
4. RATING: 50mA @12VDC
- ▲ 5. OPERATING FORCE: 250± 50 gf
6. TRAVEL: 0.3mm ±0.15mm
7. CONTACT RESISTANCE: 100 mΩ MAX. (INITIAL)
8. MECHANICAL/ELECTRICAL LIFE: 100,000 CYCLES MIN.
- ▲ 9. CONTACT MATERIAL: GOLD
10. ▲ DENOTES CRITICAL PARAMETER
11. OPERATING TEMP: -40°C TO 85°C

C	24551	REMOVE STEP IN HOUSING, CHANGE TEMP	10/29/20	JM
B	18677	LEG TOLERANCE WAS +/- 0.1	10/9/09	BLR
A	18227	RELEASED FOR PRODUCTION	9/9/08	BLR
REV	PCR NO	DESCRIPTION	DATE	BY



TITLE TL1105WF250R				
SCALE	DATE	DR	DWG	REV
4:1	10/9/2009	BLR	P156002	C

THE INFORMATION CONTAINED IN THIS DOCUMENT IS PROPRIETARY TO E-SWITCH AND IS NOT TO BE COPIED OR TRANSFERRED