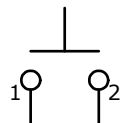
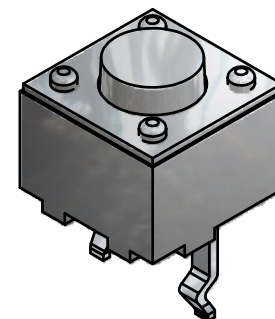
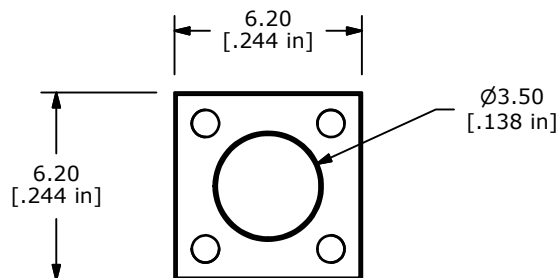


RECOMMENDED PCB LAYOUT



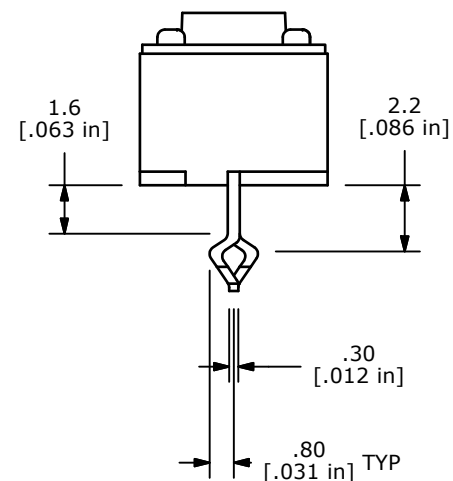
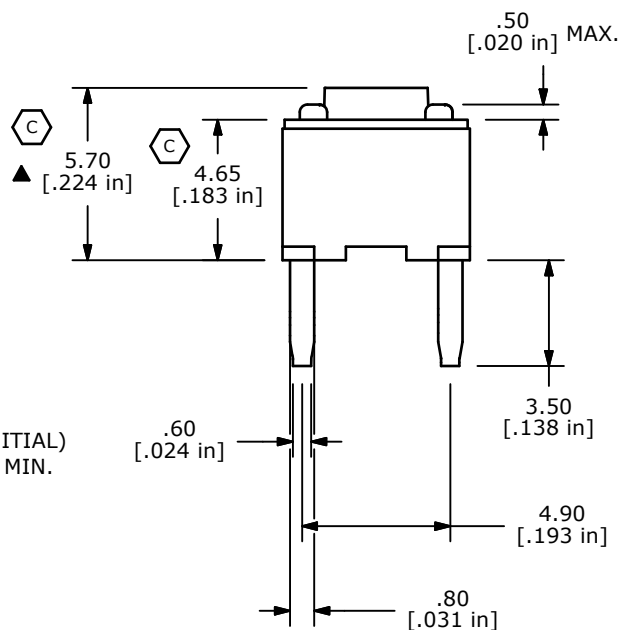
▲ CIRCUIT: SPST



ISOMETRIC

NOTES:

1. ALL DIMENSIONS IN MM
2. GENERAL TOLERANCE: X.X=±0.4
X.XX=±0.25
3. TERM. NOS. FOR REFERENCE ONLY.
4. RATING: 30VDC, 50mA
- ▲ 5. OPERATING FORCE: 70 ± 20 gms
6. TRAVEL: 0.35mm +/-0.2mm
7. CONTACT RESISTANCE: 100 MILLI OHMS MAX. (INITIAL)
8. MECHANICAL/ELECTRICAL LIFE 1,000,000 CYCLES MIN.
9. OPERATING TEMPERATURE: -25C to +85C.
10. INSULATION RESISTANCE: 100M OHMS.
11. DIELECTRIC STRENGTH: 600VAC, 1MINUTE.
12. 2002/95/EC (ROHS) COMPLIANT
13. PACKAGING: BULK
14. ▲ DENOTES CRITICAL PARAMETER



REV	PCR NO	DESCRIPTION	DATE	BY
C	19538	CHANGE DIMS was 5.75 & 4.9	12/20/10	BGL
B	16736	ADDED .5 DIM AND FIXED 1.6 DIM	12/7/06	TN
A	16674	RELEASED FOR PRODUCTION	11/17/06	TN

THE INFORMATION CONTAINED IN THIS DOCUMENT IS PROPRIETARY TO E-SWITCH AND IS NOT TO BE COPIED OR TRANSFERRED

E-SWITCH®

TITLE TL1150AF070Q

SCALE	DATE	DR	DWG	REV
4:1	12/7/2006	TN	Q970065	C