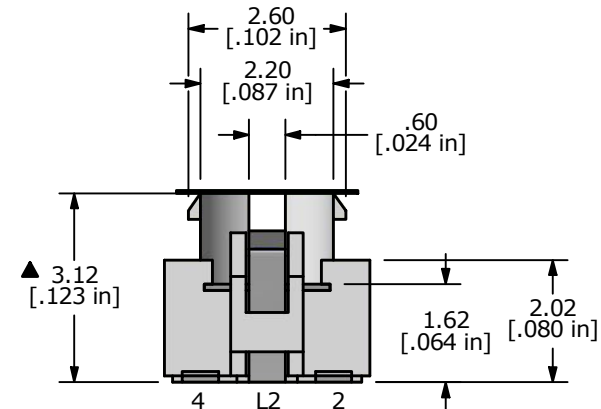
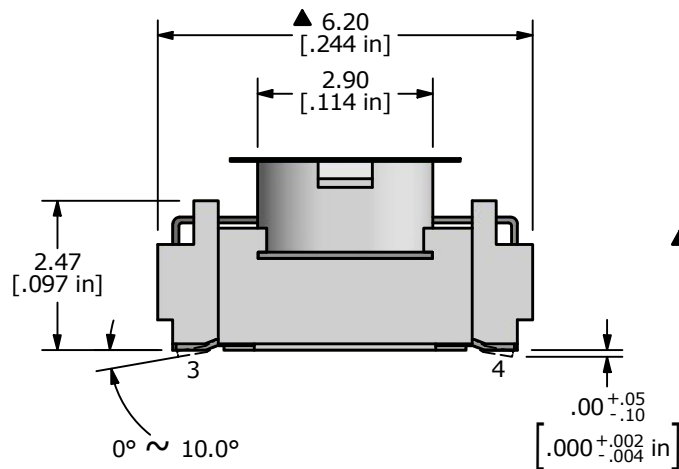
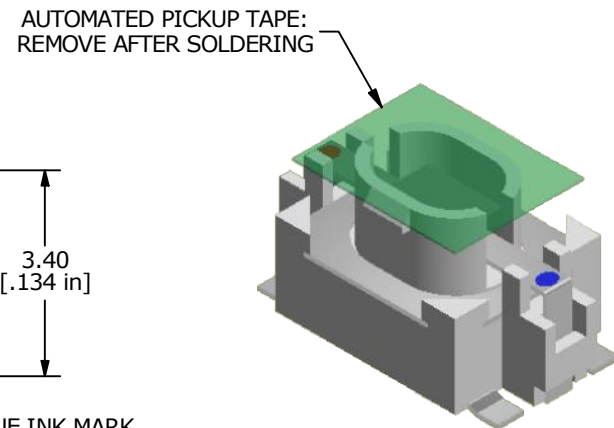
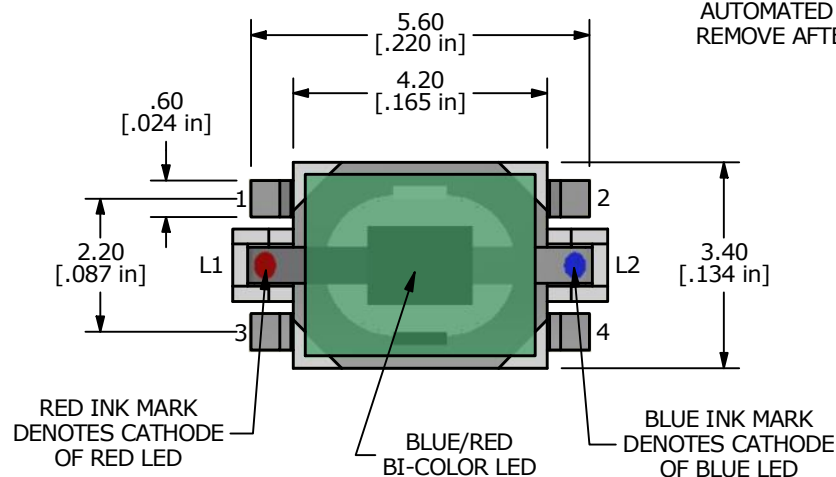


- NOTES:
1. ALL DIMENSIONS IN MM [INCH]
 2. GENERAL TOLERANCE: X.X = ± 0.4
X.XX = ± 0.25
 3. RATING: 12VDC, 50mA MAX.
 4. CONTACT RESISTANCE: 500mΩ MAX.
 5. INSULATION RESISTANCE: 100MΩ MIN. @ 100VDC
 6. TRAVEL: 0.2 ± 0.1 mm
 7. DIELECTRIC STRENGTH: 250V AC FOR 1 MIN.
 - ▲ 8. OPERATING FORCE: 160 ± 50gf
 9. OPERATING TEMPERATURE: -20°C to 70°C
 10. OPERATING LIFE: 100,000 CYCLES.
 11. PACKAGING: TAPE & REEL, 2000 PIECES PER REEL
 12. ▲ DENOTES CRITICAL PARAMETER



LED SPECS	UNITS	BLUE	RED
FORWARD CURRENT	mA	20	20
FORWARD VOLTAGE	V	2.8 MIN - 4.0 MAX	1.95 TYP- 2.5 MAX
LUMINOUS INTENSITY	mcd	80 TYP	230 TYP

REV	ECO NO	DESCRIPTION	DATE	BY
D	ECO-100577	moved LED color markings to top view	01/13/22	MW

OBJECT ID
000006553

E-SWITCH®

TITLE **TL3210AF160BRQ**

SCALE	DATE	DR	DWG	REV
8:1	12/4/2012	EBP	B200305	D