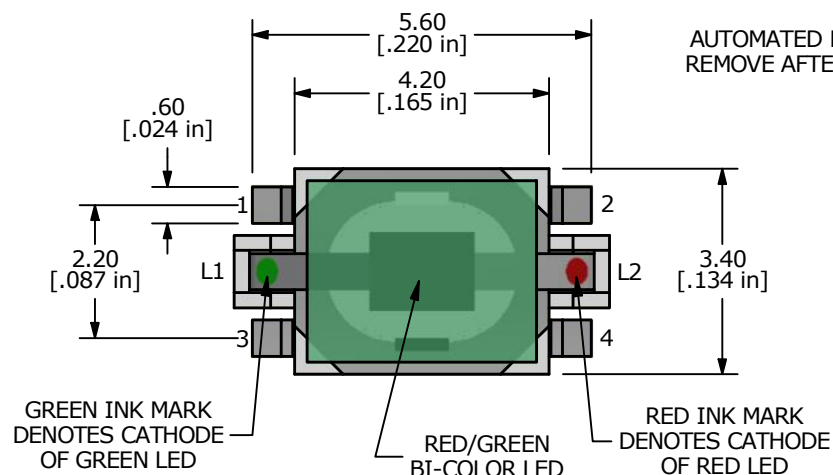
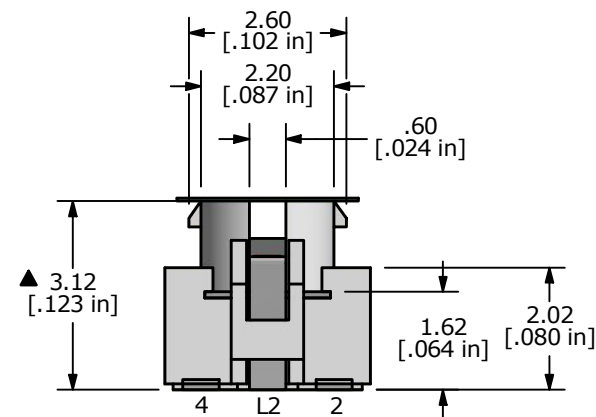
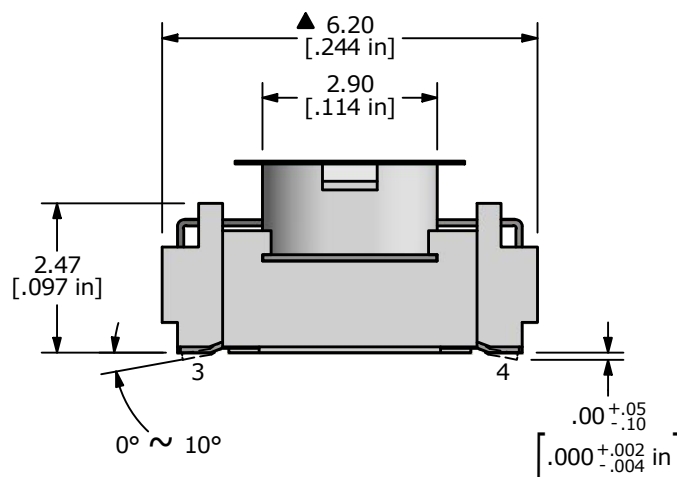
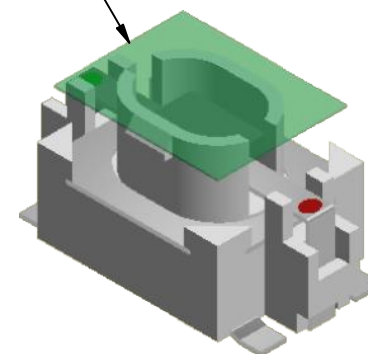


NOTES:

1. ALL DIMENSIONS IN MM [INCH]
2. GENERAL TOLERANCE: X.X = ± 0.4
X.XX = ± 0.25
3. RATING: 12VDC, 50mA MAX.
4. CONTACT RESISTANCE: 500m Ω MAX.
5. INSULATION RESISTANCE: 100M Ω MIN. @ 100VDC
6. TRAVEL: 0.2 \pm 0.1 mm
7. DIELECTRIC STRENGTH: 250V AC FOR 1 MIN.
- ▲ 8. OPERATING FORCE: 160 \pm 50gf
9. OPERATING TEMPERATURE: -20°C to 70°C
10. OPERATING LIFE: 100,000 CYCLES.
11. PACKAGING: TAPE & REEL, 2000 PIECES PER REEL
12. ▲ DENOTES CRITICAL PARAMETER



AUTOMATED PICKUP TAPE:
REMOVE AFTER SOLDERING



LED SPECS	UNITS	RED	GREEN
FORWARD CURRENT	mA	20	20
FORWARD VOLTAGE	V	1.95 typ.- 2.5 max	2.1 Typ- 2.35 Max
LUMINOUS INTENSITY	mcd	220 typ.	55
PEAK WAVELENGTH	nm	650	574

REV	ECO NO	DESCRIPTION	DATE	BY	E-SWITCH®				OBJECT ID
F	ECO-100577	moved LED color markings to top view	01/13/22	MW	TITLE TL3210AF160XQ				000006551
					SCALE 8:1	DATE 4/25/2012	DR RC	DWG B200303	REV F

THE INFORMATION CONTAINED IN THIS DOCUMENT IS PROPRIETARY TO E-SWITCH AND IS NOT TO BE COPIED OR TRANSFERRED